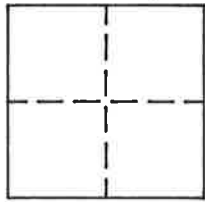


CORNER RECORD

Document Number 101

Portion of Section 6, T. 23 N., R. 14. E., M.D.M. County of Plumas, California

Brief Legal Description NW corner Lot 74, Crocker Mountain Estates, 3 M 44



CORNER TYPE

Government Corner Control
 Meander Property
 Rancho Other
 Date of Survey October 3, 1994

COORDINATES (Optional)

N. _____
 E. _____
 Zone _____ Datum _____
 Elev. _____

Corner— Left as found Found and tagged Established Reestablished Rebuilt

Identification and type of corner found: Evidence used to identify or procedure used to establish or reestablish the corner:
Found 1/2" I.P. with Plastic Plug, barely legible, stamped RCE 13219 for Northwest corner of Lot 73 also found 5/8" rebar with plastic cap stamped LS 2843 which I accepted for the Southwest corner of Lot 74, from which I established the Northwest corner of Lot 74 between the two found corners.

A description of the physical condition of the monument as found and as set or reset: Set 5/8" rebar with aluminum cap stamped LS 2843 for Northwest corner of Lot 74 which is also the Southwest corner of Lot 73.

SURVEYOR'S STATEMENT

This Corner Record was prepared by me or under my direction in conformance with the Land Surveyors' Act on October 10, 1994.

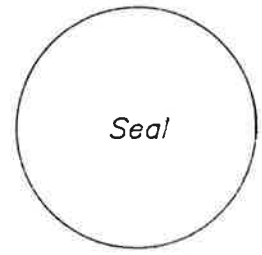
Signed John W. Hamby L.S. 2843
 John W. Hamby



COUNTY SURVEYOR'S STATEMENT

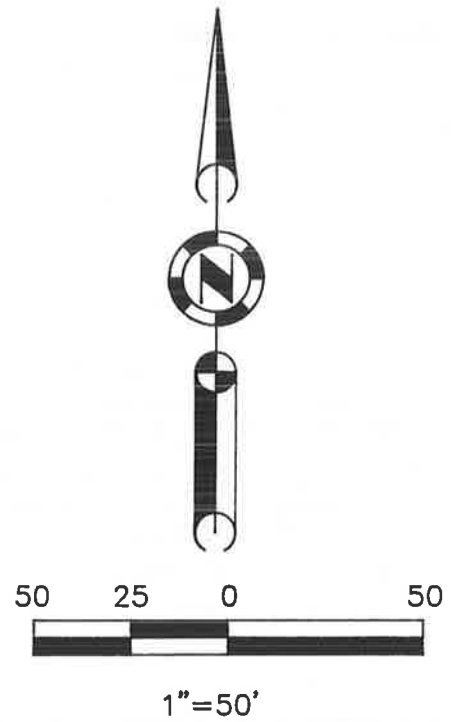
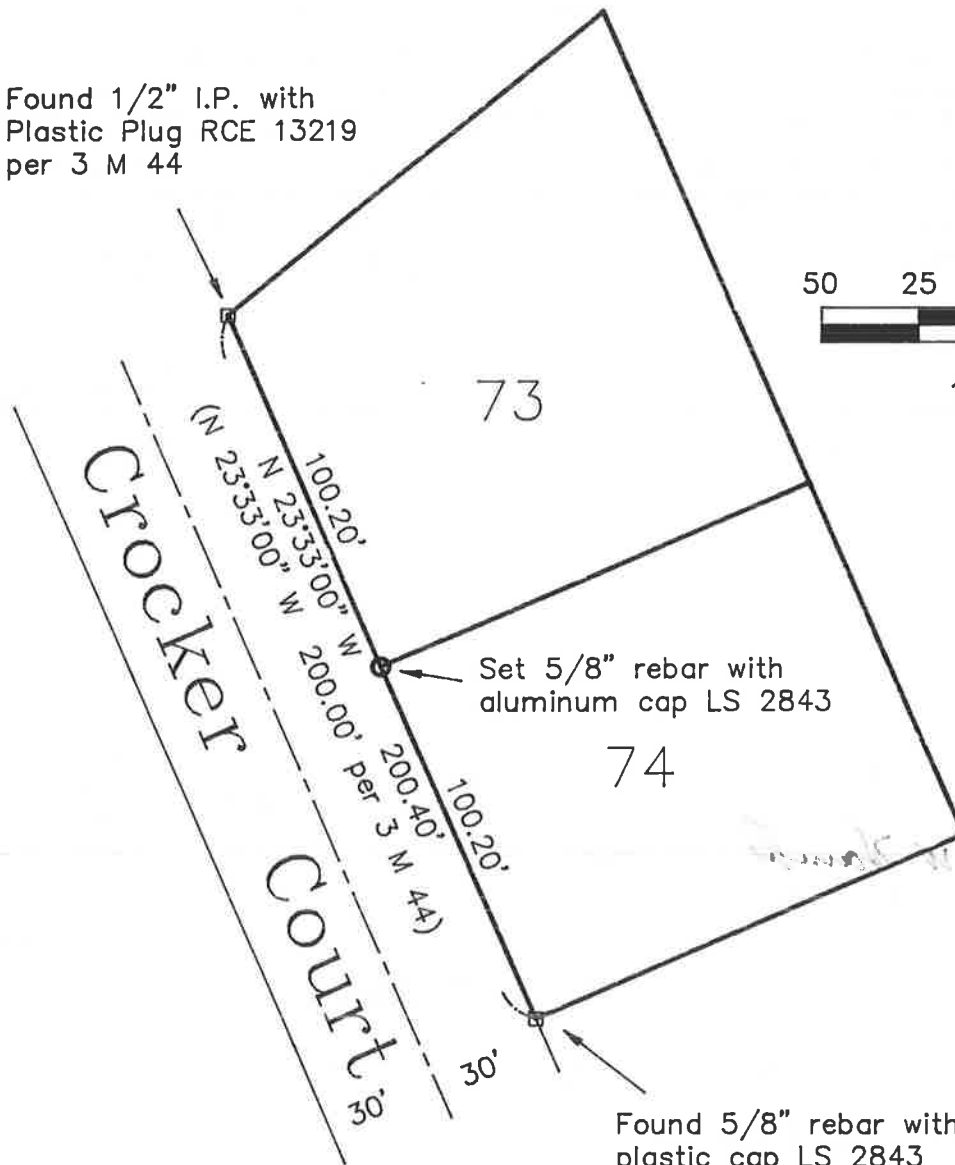
This Corner Record was received 11/2 1994 and examined and filed 11/2 1994.

Signed Tom Egan Title _____



County Surveyor's Comment _____

Found 1/2" I.P. with
Plastic Plug RCE 13219
per 3 M 44



Lot 73 & 74 Crocker Mountain Estates