

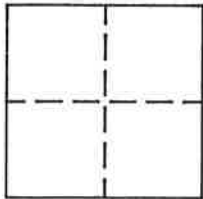
CORNER RECORD

Document Number 102

Portion of Section 6, T. 23 N., R. 14 E., M.D.M.

County of Plumas, California

Brief Legal Description NE Corner Lot 31 Welch Estates Unit No. 3, 2 M 44



CORNER TYPE

Government Corner Control
Meander Property
Rancho Other
Date of Survey October 18, 1994

COORDINATES
(Optional)

N. _____
E. _____
Zone _____ Datum _____
Elev. _____

Corner- Left as found Found and tagged Established Reestablished Rebuilt

Identification and type of corner found: Evidence used to identify or procedure used to establish or reestablish the corner:
Found 3/4" open I.P. on North right of way line of Lot 30 at P.C. of curve and also
found 3/4" I.P. tagged LS 2702 on right of way line on North line of Lot 36 at P.T. of
curve, both in record position, used these two points to establish the Northeast corner
of Lot 31, as shown on sketch.

A description of the physical condition of the monument as found and as set or reset: Set 5/8" rebar with
aluminum cap stamped LS 2843 for the Northeast corner of Lot 31. and also set
tag on found 3/4" I.P. on right of way line at P.C. of curve on North line of Lot 30
as shown on sketch.

SURVEYOR'S STATEMENT

This Corner Record was prepared by me or under my direction in conformance with the Land Surveyors' Act on October 18, 1994.

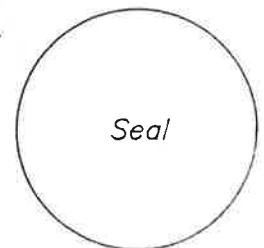
Signed John W. Hamby L.S. 2843
John W. Hamby



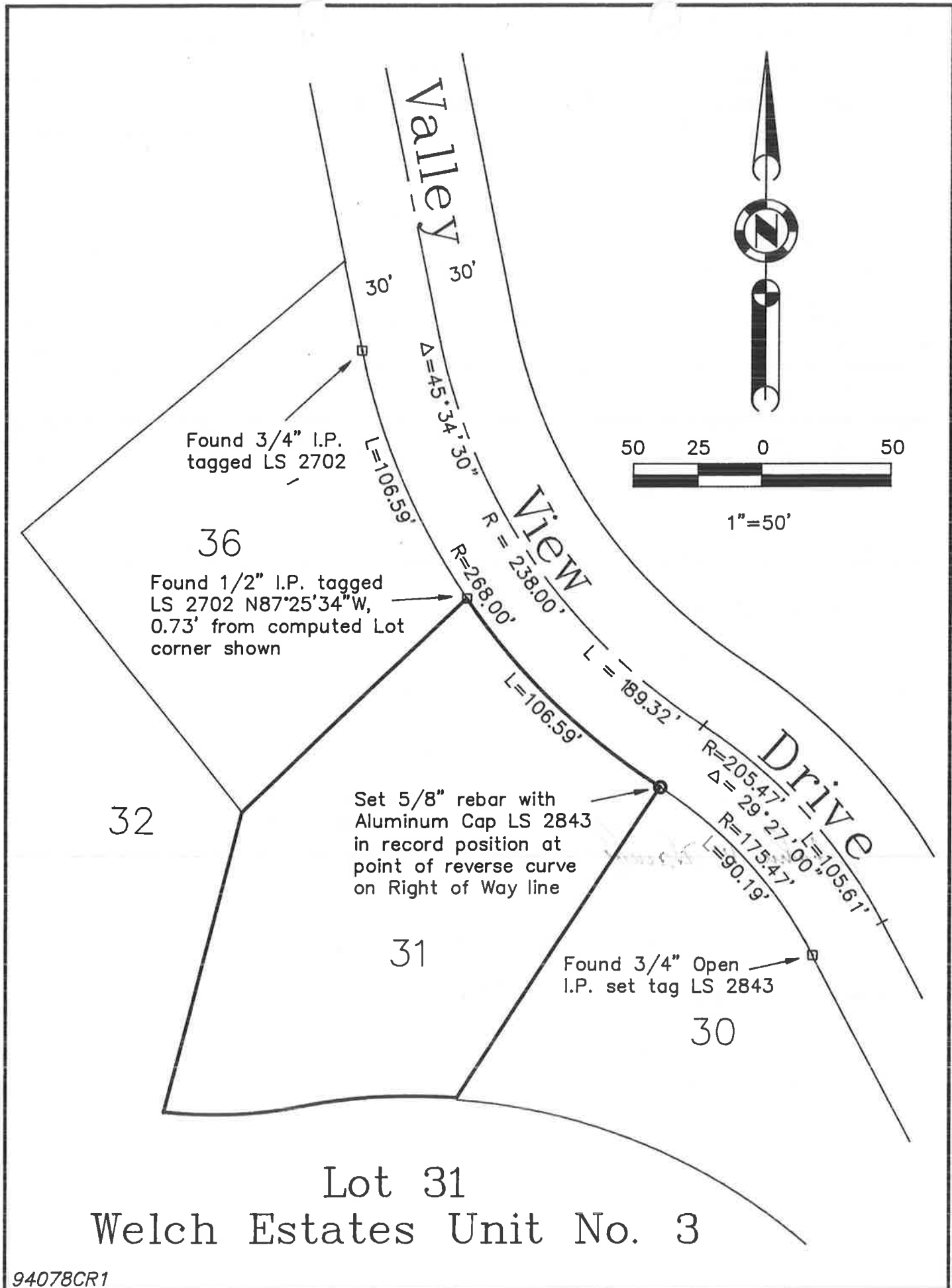
COUNTY SURVEYOR'S STATEMENT

This Corner Record was received 11/2 1994 and
examined and filed 11/2 1994.

Signed Tom Hunter Title _____



County Surveyor's Comment _____



Lot 31
Welch Estates Unit No. 3