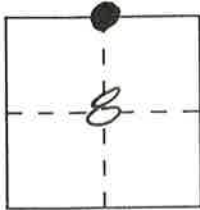


CORNER RECORD

Document Number _____

City of _____ County of PLUMAS, California

Brief Legal Description 1/4 COR OF SECS 5 & 8 T21N R12E MDM



CORNER TYPE

Government Corner Control
 Meander Property
 Rancho Other
 Date of Survey _____

COORDINATES (Optional)

N. _____
 E. _____
 Zone _____ Datum _____
 Elev. _____

Corner — Left as found Found and tagged Established Reestablished Rebuilt

Identification and type of corner found: Evidence used to identify or procedure used to establish or reestablish the corner:
FOUND 1 GLD BEARING TREE IN GOOD CONDITION (SEE OVER →)

A description of the physical condition of the monument as found and as set or reset:
FOUND A STONE MOUND IN GOOD CONDITION
SET A STD U.S.F.S. DRIVE-IN MONUMENT IN EXISTING MOUND
(SEE BOOK 10 OF MAPS & SURVEYS, PAGES 24 & 25,
SIERRA COUNTY RECORDS)

SURVEYOR'S STATEMENT

This Corner Record was prepared by me or under my direction in conformance with the Land Surveyors' Act on FEBRUARY 21, 1995.

Signed Fred W. Cook L.S. or R.C.E. Number LS 3966



COUNTY SURVEYOR'S STATEMENT

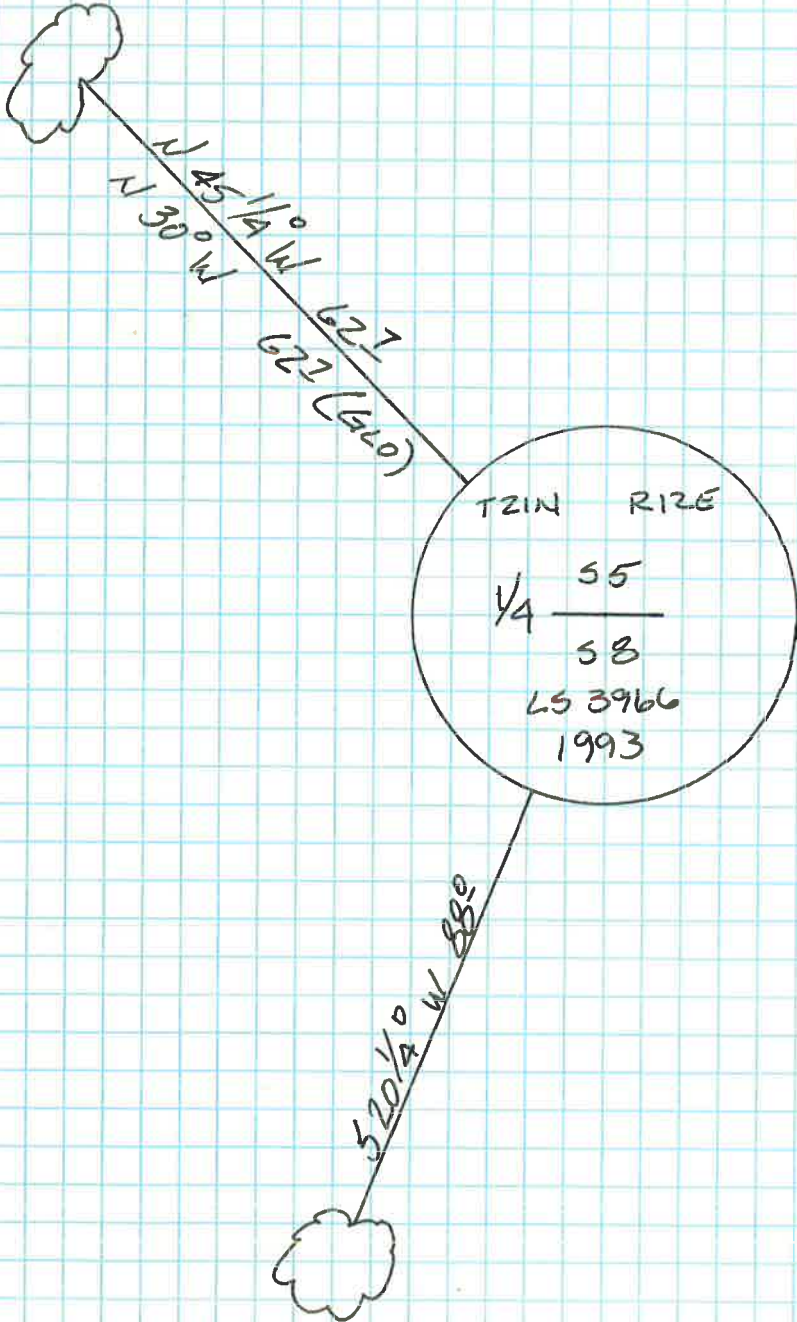
This Corner Record was received 2/23 1995 and examined and filed 2/28 1995.

Signed R Tom Smith Title Co. Surveyor



County Surveyor's Comment _____

ED A 36" YELLOW PINE
REC 24" YELLOW PINE (GLO)



BLAZED & SCRIBED
14" YELLOW PINE
"1/4 58 BT"