

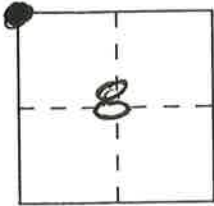
# CORNER RECORD

Document Number \_\_\_\_\_

City of \_\_\_\_\_

County of PLUMAS, California

Brief Legal Description NW COR. SEC 8 T21N R12E MDM



### CORNER TYPE

Government Corner  Control   
 Meander  Property   
 Rancho  Other   
 Date of Survey \_\_\_\_\_

### COORDINATES (Optional)

N. \_\_\_\_\_  
 E. \_\_\_\_\_  
 Zone \_\_\_\_\_ Datum \_\_\_\_\_  
 Elev. \_\_\_\_\_

Corner — Left as found  Found and tagged  Established  Reestablished  Rebuilt

Identification and type of corner found: Evidence used to identify or procedure used to establish or reestablish the corner:

FOUND 3 GLO BEARING TREES, 1 WITH VISIBLE SCRIBING,  
2 WITH HEALED SCARS, ALL IN GOOD CONDITION (SEE OVER ->)

A description of the physical condition of the monument as found and as set or reset:

FOUND A STONE MOUND IN GOOD CONDITION  
SET A STD. U.S.F.S. ALUM. MON. IN EXISTING MOUND  
(SEE BOOK 10 OF MAPS & SURVEYS PAGES 24 & 25,  
SIERRA COUNTY RECORDS)

### SURVEYOR'S STATEMENT

This Corner Record was prepared by me or under my direction in conformance with the Land Surveyors' Act on FEBRUARY 21, 1995.

Signed Fred W. Cook L.S. or R.C.E. Number LS 3966



### COUNTY SURVEYOR'S STATEMENT

This Corner Record was received 2/28 1995 and examined and filed 2/28 1995.

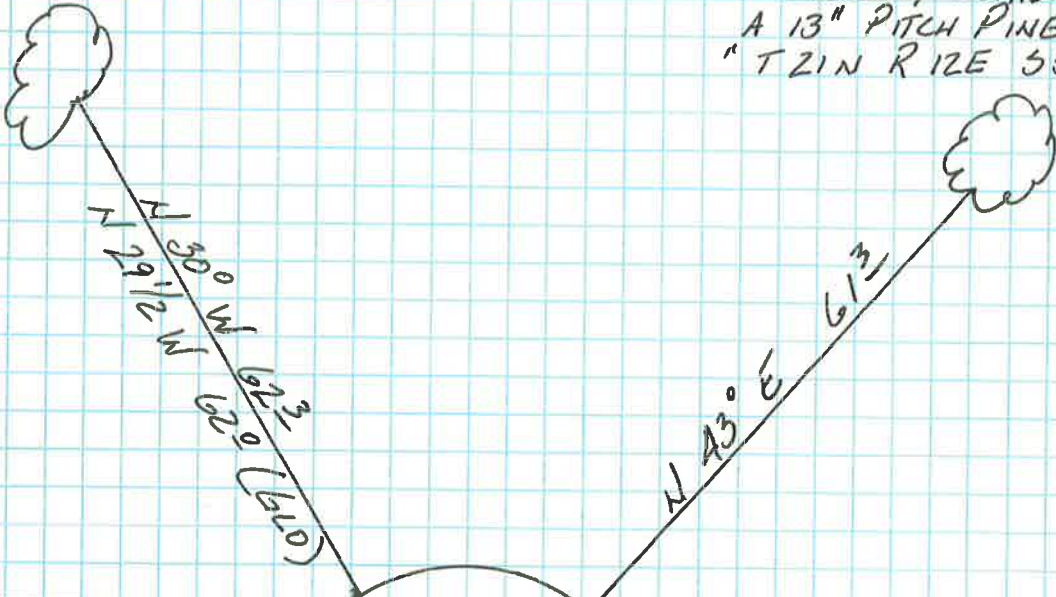
Signed R Tom Stanton Title Co. Surveyor



County Surveyor's Comment \_\_\_\_\_

FD 29" YELLOW PINE  
REL 30" PITCH PINE (GLO)

BLAZED & SCRIBED  
A 13" PITCH PINE  
"T2IN R1ZE 55 BT"



T2IN	R1ZE
56	55
57	58
LS 3966	
1993	

N 43° E 61m

N 29 1/2° W 300m  
N 29 1/2° W 120m  
N 29 1/2° W 120m (GLO)

S 47 1/4° E 785  
S 47 1/4° E 785 (GLO)

S 14 3/4° W 893  
S 14 3/4° W 889 (GLO)

FD 20" YELLOW PINE  
REL 8" PITCH PINE (GLO)

FD 31" YELLOW PINE  
REL 24" PITCH PINE (GLO)