

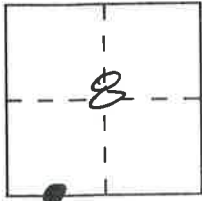
CORNER RECORD

Document Number _____

City of _____

County of PLUMAS, California

Brief Legal Description W 1/16 COR. OF SECS. 8 & 17, T21N, R12E, MDM



CORNER TYPE

- Government Corner
- Meander
- Rancho
- Date of Survey _____
- Control
- Property
- Other

COORDINATES (Optional)

N. _____
 E. _____
 Zone _____ Datum _____
 Elev. _____

Corner — Left as found Found and tagged Established Reestablished Rebuilt

Identification and type of corner found: Evidence used to identify or procedure used to establish or reestablish the corner:
STANDARD SECTIONAL BREAKDOWN

A description of the physical condition of the monument as found and as set or reset:
SET A STD. U.S.F.S DRIVE-IN MON. IN A STONE MOUND
(SEE BOOK 10 OF MAPS & SURVEYS PAGES 24 & 25
IN SIERRA COUNTY RECORDS)

SURVEYOR'S STATEMENT

This Corner Record was prepared by me or under my direction in conformance with the Land Surveyors' Act on FEBRUARY 21, 19 95.

Signed Fred W. Cook L.S. or R.C.E. Number L.S. 3966



COUNTY SURVEYOR'S STATEMENT

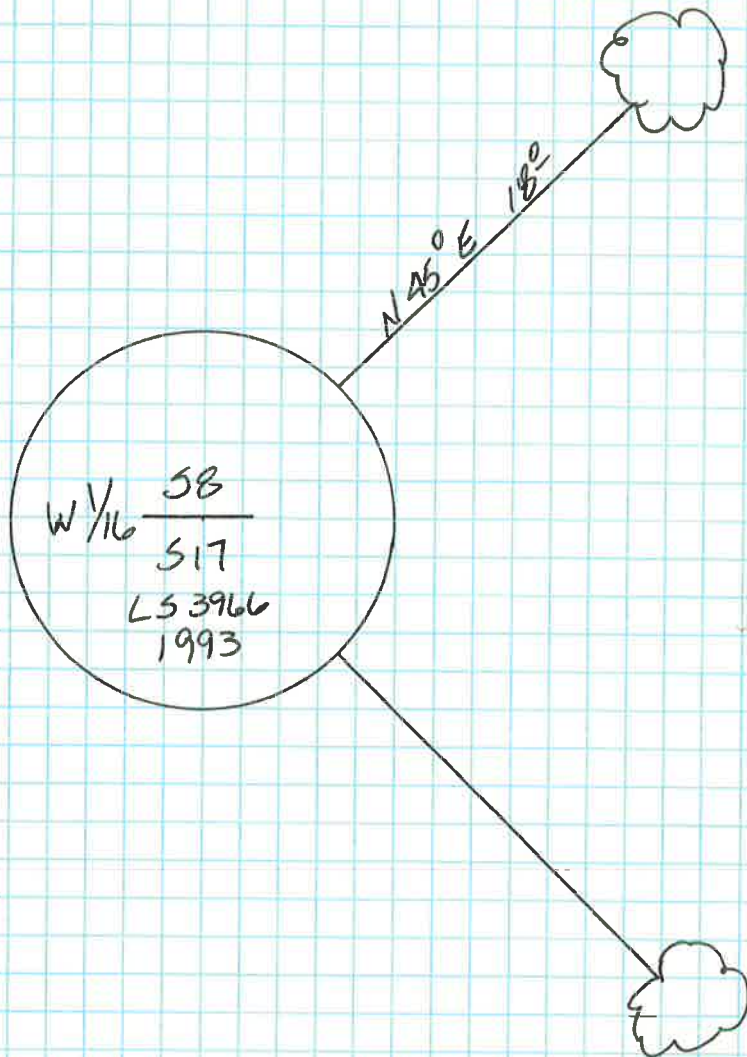
This Corner Record was received 2/23 19 95 and examined and filed 2/28 19 95.

Signed R. Tom Spitzer Title Co. Surveyor



County Surveyor's Comment _____

BLAZED & SCRIBED
11" WHITE FIR
"W 1/16 SB BT"



BLAZED & SCRIBED
12" WHITE FIR
"W 1/16 S 17 BT"