

CORNER RECORD

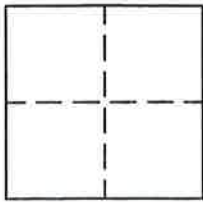
R 13 E

Document Number \_\_\_\_\_

Section 36, T. 23 N., R. \_\_\_\_\_, E., M.D.M.

City of Portola, County of Plumas, California

Brief Legal Description Southeast and Northeast corners Lot 4, Block 50 Second North Addition Portola California



CORNER TYPE

COORDINATES (Optional)

Government Corner  Control   
Meander  Property   
Rancho  Other   
Date of Survey May 15, 1995

N. \_\_\_\_\_  
E. \_\_\_\_\_  
Zone \_\_\_\_\_ Datum \_\_\_\_\_  
Elev. \_\_\_\_\_

Corner- Left as found  Found and tagged  Established  Reestablished  Rebuilt

Identification and type of corner found: Evidence used to identify or procedure used to establish or reestablish the corner: Found corners to South 1/2 of Block 50 as shown on 8 RS 139 and established the Northeast corner and the Southeast corner of Lot 4, also being the Northwest corner and Southwest corner of Lot 3, Block 50.

A description of the physical condition of the monument as found and as set or reset: Found 5/8" rebars with Plastic Caps LS 2843 for the Northeast corner, the Northwest corner and the Southwest corner of Block 50 & found 3/4" I.P. tagged LS 2843 for the Southeast corner of Block 50, Set 5/8" rebar with Plastic Caps for the Northeast corner and Southeast corner of Lot 4, Block 50.

SURVEYOR'S STATEMENT

This Corner Record was prepared by me or under my direction in conformance with the Land Surveyors' Act on May 15, 1995.

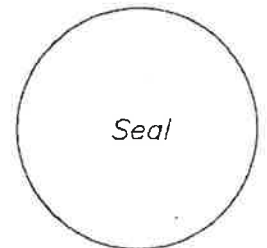
Signed John W. Hamby LS. 2843  
John W. Hamby



COUNTY SURVEYOR'S STATEMENT

This Corner Record was received 6/1 1995 and examined and filed 6/9 1995.

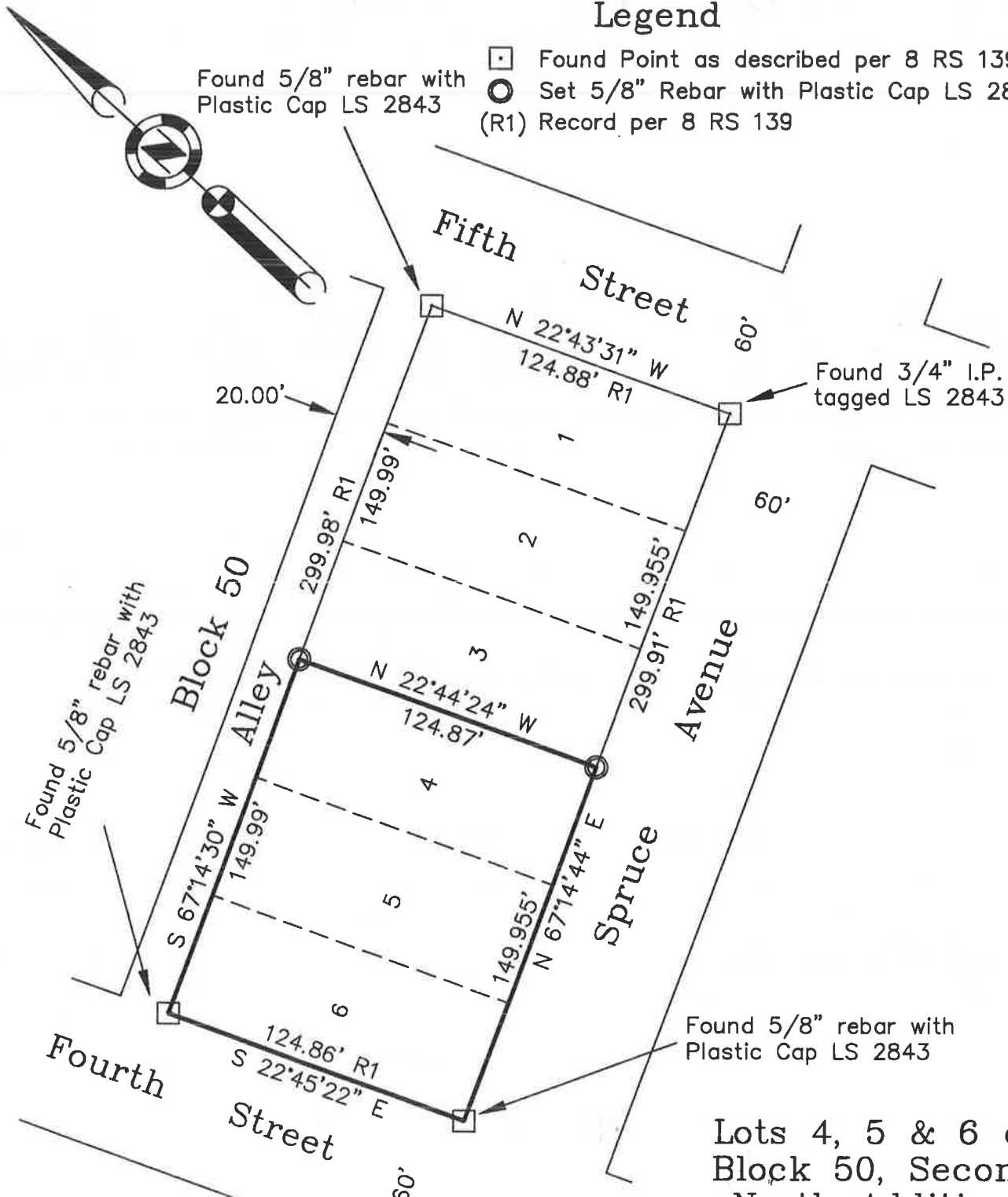
Signed R Tom Hunter Title Co. Surveyor



County Surveyor's Comment \_\_\_\_\_  
\_\_\_\_\_  
\_\_\_\_\_

# Legend

- Found 5/8" rebar with Plastic Cap LS 2843
- Found 3/4" I.P. tagged LS 2843
- Found Point as described per 8 RS 139
- Set 5/8" Rebar with Plastic Cap LS 2843
- (R1) Record per 8 RS 139



## Lots 4, 5 & 6 of Block 50, Second North Addition, Portola Townsite

Located in the NE 1/4 of Section 36,  
 T. 23 N., R. 13 E., M.D.M.  
 Plumas County ~ California  
 Scale 1"=60' May 15, 1995

Hamby Surveying Inc.  
 P.O. Box 1209  
 Portola, CA 96122  
 (916) 832-5571