

CORNER RECORD

COUNTY OF PLUMAS T. 28 N R. 7 E MDM MERIDIAN CALIFORNIA
 CORNER TYPE: GOVT. CORNER MEANDER RANCHO CONTROL OTHER
 CORNER IDENTIFICATION — DATE OF VISIT 6-23-95 19__



CORNER — LEFT AS FOUND FOUND AND TAGGED REESTABLISHED OBLITERATED CORNER REBUILT

PHYSICAL DESCRIPTION OF CORNER FOUND; EVIDENCE AND METHOD USED TO IDENTIFY OR REESTABLISH

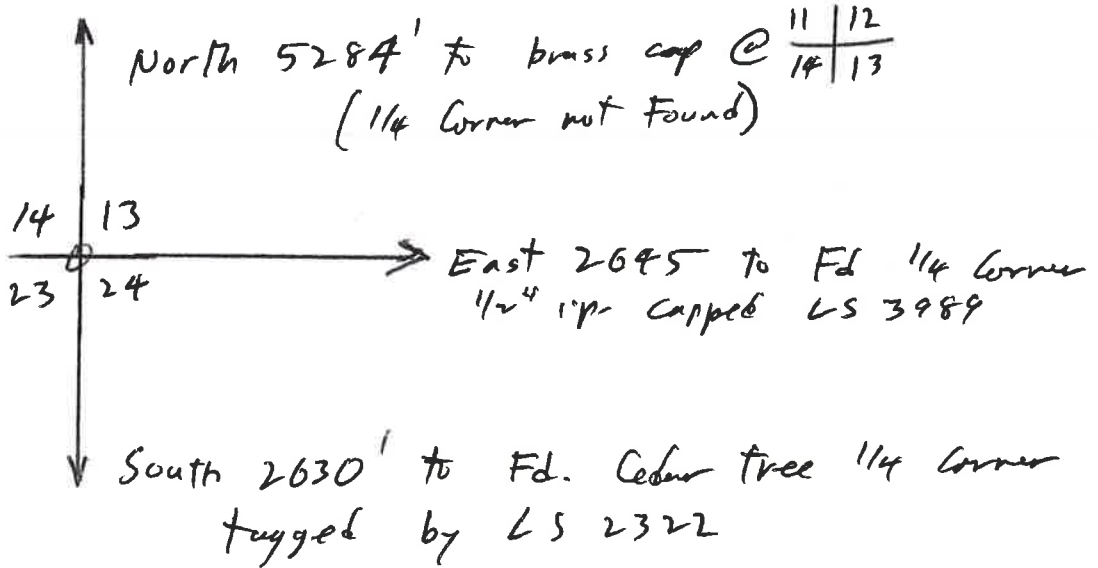
Found old stump hole for original 18" Sugar Pine Section Corner tree. Matches distances south, north, & East.

PHYSICAL DESCRIPTION OF MONUMENTS REBUILT OR PERPETUATED

set 1/2" rebar tagged LS 3989 in stump hole & constructed stone Mound.

CALIFORNIA COORDINATE SYSTEM ORDER: FIRST SECOND THIRD
 STATIONS USED: NGS (USC & GS) STATE COUNTY OTHER STATION _____ STATION _____
 ZONE _____ ELEVATION _____ NORTHINGS (Y) _____ EASTINGS (X) _____

SKETCH: (Include reference tie or witness points, remarks and topo of area)



SURVEYOR'S CERTIFICATE
 THIS CORNER RECORD WAS PREPARED BY ME OR UNDER MY DIRECTION IN CONFORMANCE WITH THE LAND SURVEYORS ACT ON June 26 1995
 SIGNED: Fred W. Handel
 L.S. or R.C.E. No.: LS 3989

SEAL

COUNTY SURVEYOR'S CERTIFICATE
 THE CORNER RECORD WAS RECEIVED 6/26 1995 AND EXAMINED AND FILED BY: R. Tom Stanton
 TITLE: Co Engineer
 DOCUMENT No. 110

STATEMENT ON BACK OF SHEET

YES NO

