

CORNER RECORD

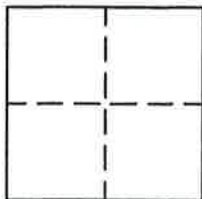
R14

Document Number 111

Section 7, T. 23 N., R. 14 E., M.D.M.

County of San Luis Obispo, California

Brief Legal Description NW corner Lot 7 of 2 M 44 Welch Estates Unit No. 3



CORNER TYPE

Government Corner Control
Meander Property
Rancho Other
Date of Survey August 24, 1995

COORDINATES

(Optional)

N. _____
E. _____
Zone _____ Datum _____
Elev. _____

Corner— Left as found Found and tagged Established Reestablished Rebuilt

Identification and type of corner found: Evidence used to identify or procedure used to establish or reestablish the corner: Found SW corners of Lots 12, 11, 10 & 9, also the NW corner of Lots 5 & 8, as shown on attached sketch, from which I reestablish the NW corner of Lot 7 in record position.

A description of the physical condition of the monument as found and as set or reset: NW corner of Lot 7 was missing, Set 5/8" rebar with Aluminum Cap stamped LS 2843 at record position from 2 M 44, Welch Estates Unit No. 3.

SURVEYOR'S STATEMENT

This Corner Record was prepared by me or under my direction in conformance with the Land Surveyors' Act on August 24, 1995.

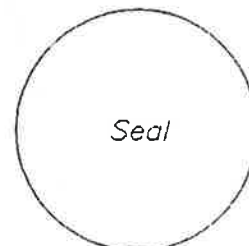
Signed John W. Hamby L.S. 2843
John W. Hamby



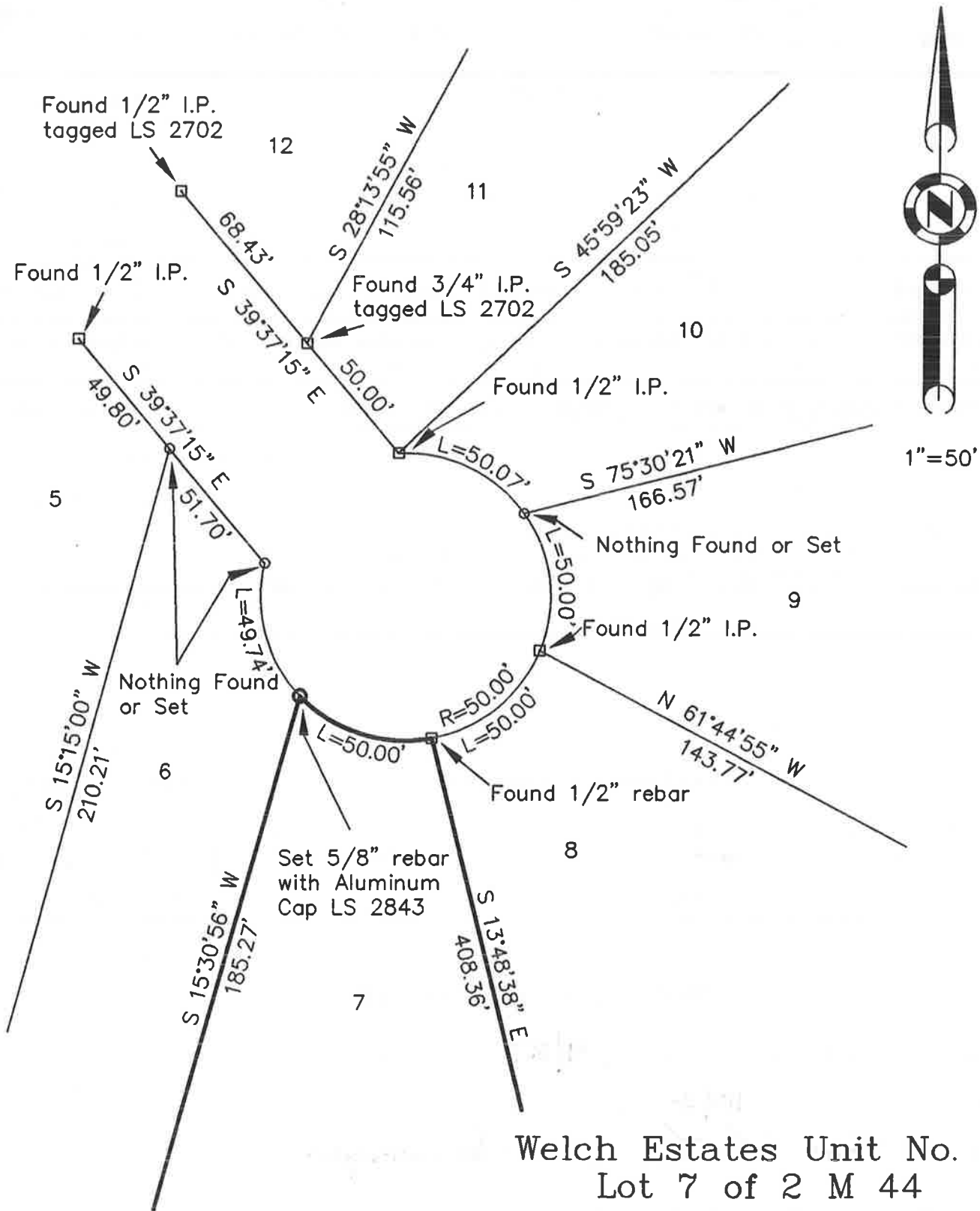
COUNTY SURVEYOR'S STATEMENT

This Corner Record was received 9/27 1995 and examined and filed 10/2 1995.

Signed R Tom Smith Title Co Surveyor



County Surveyor's Comment _____



1"=50'

Welch Estates Unit No. 3
 Lot 7 of 2 M 44
 Located in Section 7
 T. 23 N., R. 14 E., M.D.M.

Note: All Bearings & Distance shown are record per 2 M 44

Hamby Surveying Inc.
 P.O. Box 1209
 Portola, CA 96122
 (916) 832-5571