

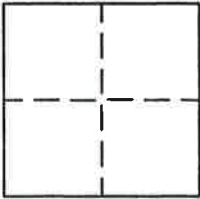
CORNER RECORD

Document Number _____

Section 8, T. 22 N., R. 12 E., M.D.M.

County of Plumas, California

Brief Legal Description Southeast Corner Lot 52, Plumas-Eureka Estates Unit No. 2, 4 M 96



CORNER TYPE

Government Corner Control
 Meander Property
 Rancho Other
 Date of Survey October 13, 1995

COORDINATES (Optional)

N. _____
 E. _____
 Zone _____ Datum _____
 Elev. _____

Corner— Left as found Found and tagged Established Reestablished Rebuilt

Identification and type of corner found: Evidence used to identify or procedure used to establish or reestablish the corner:

Found 1/2 rebar at Northeast Corner of Lot 53, Southeast Corner of Lot 52 and at the Northwest Corner of Lot 52, also being the Southwest Corner of Lot 53, from which I reestablished the Northeast Corner of Lot 52, also being the Southeast Corner of Lot 53.

A description of the physical condition of the monument as found and as set or reset: Set a 5/8" rebar with an Aluminum Cap stamped LS 2843, in record position, from points described above.

SURVEYOR'S STATEMENT

This Corner Record was prepared by me or under my direction in conformance with the Land Surveyors' Act on October 13, 1995.

Signed John W. Hamby L.S. 2843
John W. Hamby



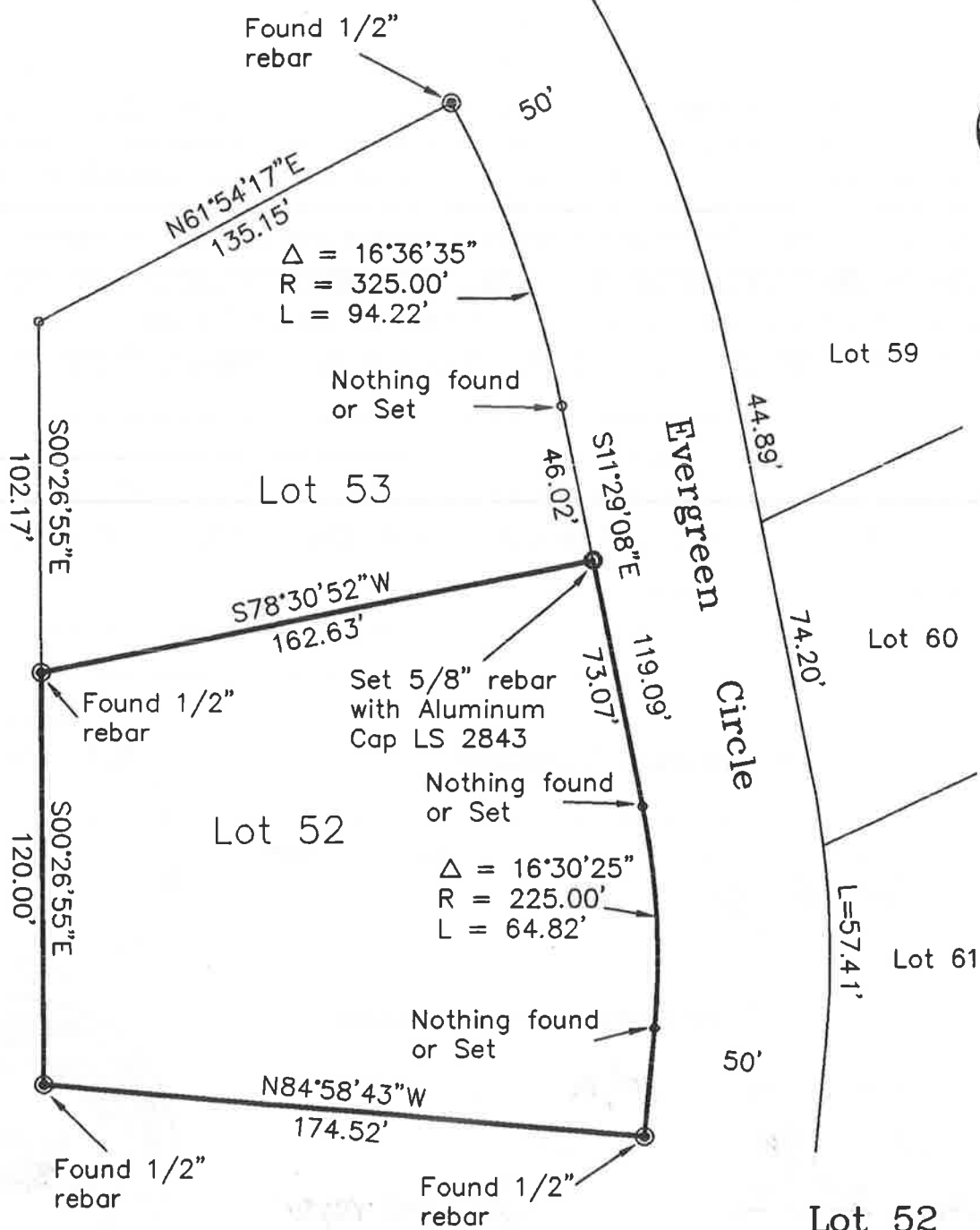
COUNTY SURVEYOR'S STATEMENT

This Corner Record was received 10/19 1995 and examined and filed 11/8 1995.

Signed R. Tom Hunter Title Co. Surveyor



County Surveyor's Comment _____



Lot 52
 Plumas Eureka Estates
 Unit No. 2
 4 M 96

Hamby Surveying Inc.
 P.O. Box 1209
 Portola, CA 96122
 (916) 832-5571