

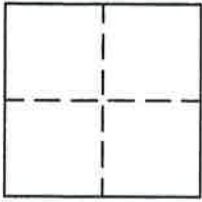
CORNER RECORD

Document Number \_\_\_\_\_

Section 35, T. 24 N., R. 15 E., M.D.M.

County of Plumas, California

Brief Legal Description SW right-of-way corner of Parcel 4, of 3 PM 33



CORNER TYPE

Government Corner  Control   
Meander  Property   
Rancho  Other   
Date of Survey September 8, 1995

COORDINATES (Optional)

N. \_\_\_\_\_  
E. \_\_\_\_\_  
Zone \_\_\_\_\_ Datum \_\_\_\_\_  
Elev. \_\_\_\_\_

Corner— Left as found  Found and tagged  Established  Reestablished  Rebuilt

Identification and type of corner found: Evidence used to identify or procedure used to establish or reestablish the corner:  
Found 1/2" I.P. tagged RCE 7294 at Southwest corner of Parcel 2 and Southeast corner of Parcel 4, from which I set the right-of-way point on the South line of Parcel 4.

A description of the physical condition of the monument as found and as set or reset: Set 5/8" rebar with Aluminum Cap stamped LS 2843 in record position from found point shown above.

SURVEYOR'S STATEMENT

This Corner Record was prepared by me or under my direction in conformance with the Land Surveyors' Act on September 8, 1995.

Signed John W. Hamby L.S. 2843  
John W. Hamby



COUNTY SURVEYOR'S STATEMENT

This Corner Record was received 10/30 1995 and examined and filed 11/8 1995.

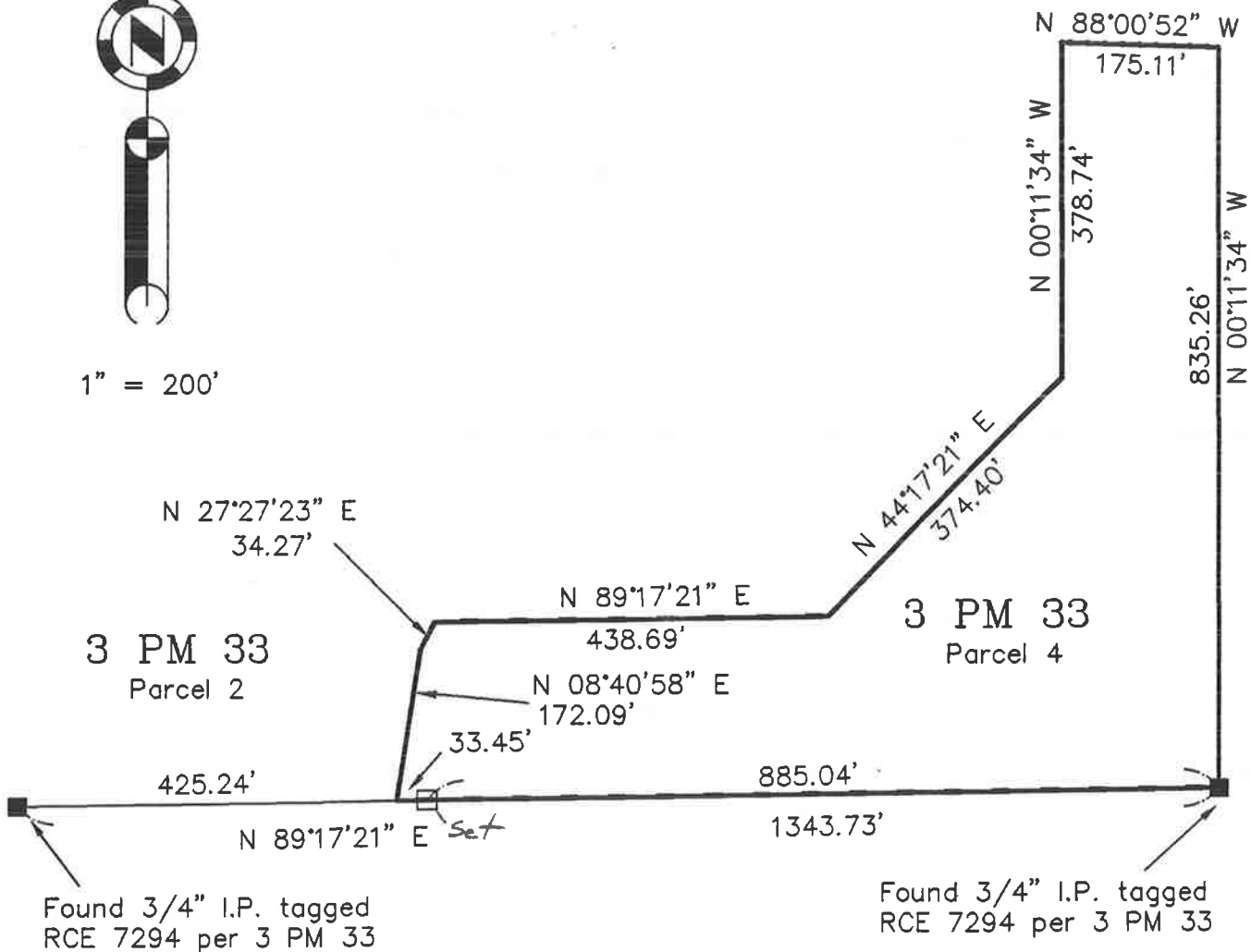
Signed R. Tom Hunter Title Co. Surveyor



County Surveyor's Comment \_\_\_\_\_  
\_\_\_\_\_  
\_\_\_\_\_



1" = 200'



### Parcel 4, of 3 PM 33

NE 1/4 of NW 1/4 Section 35  
T. 24 N., R. 15 E., M.D.M.

Hamby Surveying Inc.  
P.O. Box 1209  
Portola, CA 96122  
(916) 832-5571