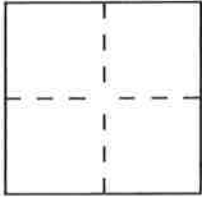


CORNER RECORD

Document Number 115

City of UNINCORPORATED County of PLUMAS, California

Brief Legal Description PORTION OF SECTION 14, T.24N. R.8E., M.D.M.



CORNER TYPE

Government Corner Control
Meander Property
Rancho Other
Date of Survey _____

COORDINATES (Optional)

N. _____
E. _____
Zone _____ Datum _____
Elev. _____

Corner — Left as found Found and tagged Established Reestablished Rebuilt

Identification and type of corner found: Evidence used to identify or procedure used to establish or reestablish the corner:
SEE SKETCH ON REVERSE SIDE

A description of the physical condition of the monument as found and as set or reset:
SEE SKETCH ON REVERSE SIDE

SURVEYOR'S STATEMENT

This Corner Record was prepared by me or under my direction in conformance with the Land Surveyors' Act on NOVEMBER 10 1995.

Signed Neil P. Campbell L.S. or R.C.E. Number P.L.S. 4207



COUNTY SURVEYOR'S STATEMENT

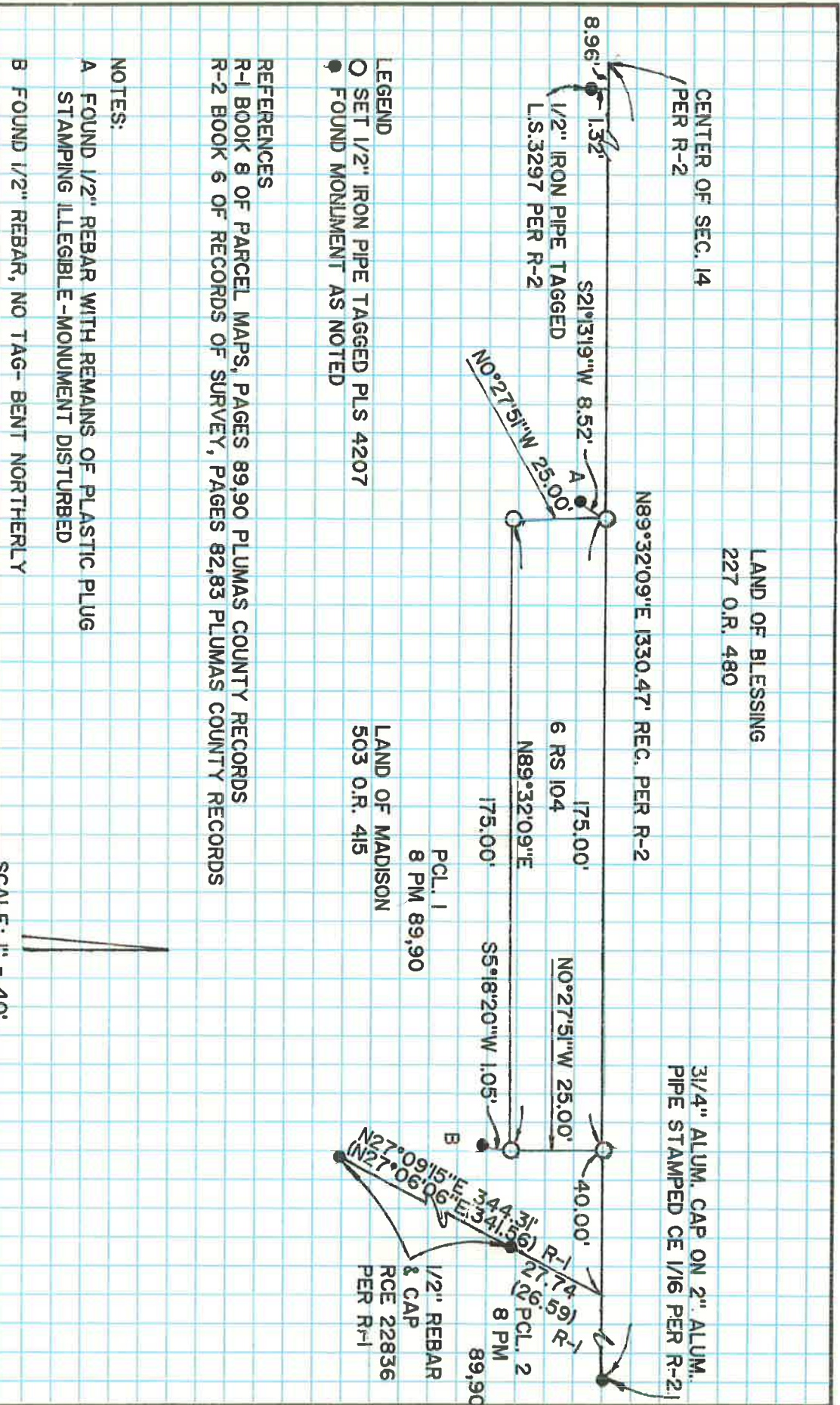
This Corner Record was received November 13 1995 and examined and filed December 11 1995.

Signed R. Tom Hunter Title Co. Surveyor



County Surveyor's Comment _____

115



CENTER OF SEC. 14
/ PER R-2

LAND OF BLESSING
227 O.R. 480

3/4" ALUM. CAP ON 2" ALUM.
PIPE STAMPED CE 1/16 PER R-2

- LEGEND**
- SET 1/2" IRON PIPE TAGGED PLS 4207
 - FOUND MONUMENT AS NOTED

- REFERENCES**
- R-1 BOOK 8 OF PARCEL MAPS, PAGES 89,90 PLUMAS COUNTY RECORDS
 - R-2 BOOK 6 OF RECORDS OF SURVEY, PAGES 82,83 PLUMAS COUNTY RECORDS

- NOTES:**
- A FOUND 1/2" REBAR WITH REMAINS OF PLASTIC PLUG STAMPING ILLEGIBLE - MONUMENT DISTURBED
 - B FOUND 1/2" REBAR, NO TAG - BENT NORTHERLY

LAND OF MADISON
503 O.R. 415

SCALE: 1" = 40'

