

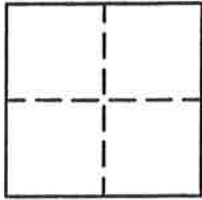
CORNER RECORD

Document Number _____

Section 34, T. 23 N., R. 13 E., M.D.M.

County of Plumas, California

Brief Legal Description Northeast Corner of Parcel A of 4 PM 56



CORNER TYPE

Government Corner Control
 Meander Property
 Rancho Other
 Date of Survey _____

COORDINATES (Optional)

N. _____
 E. _____
 Zone _____ Datum _____
 Elev. _____

Corner— Left as found Found and tagged Established Reestablished Rebuilt

Identification and type of corner found: Evidence used to identify or procedure used to establish or reestablish the corner:
Found 3/4" I.P., not tagged, at Northwest corner of Parcel A and Found 3/4" I.P., tagged
LS 3202, per 4 PM 56 from which I set the Northeast corner of Parcel A in record
position.

A description of the physical condition of the monument as found and as set or reset: Set 5/8" rebar with
Aluminum Cap in record position from found monuments described above.

SURVEYOR'S STATEMENT

This Corner Record was prepared by me or under my direction in conformance with the Land Surveyors' Act on November 2, 1995.

Signed John W Hamby L.S. 2843
 John W. Hamby



COUNTY SURVEYOR'S STATEMENT

This Corner Record was received 12/1 1995 and
 examined and filed 12/19 1995.

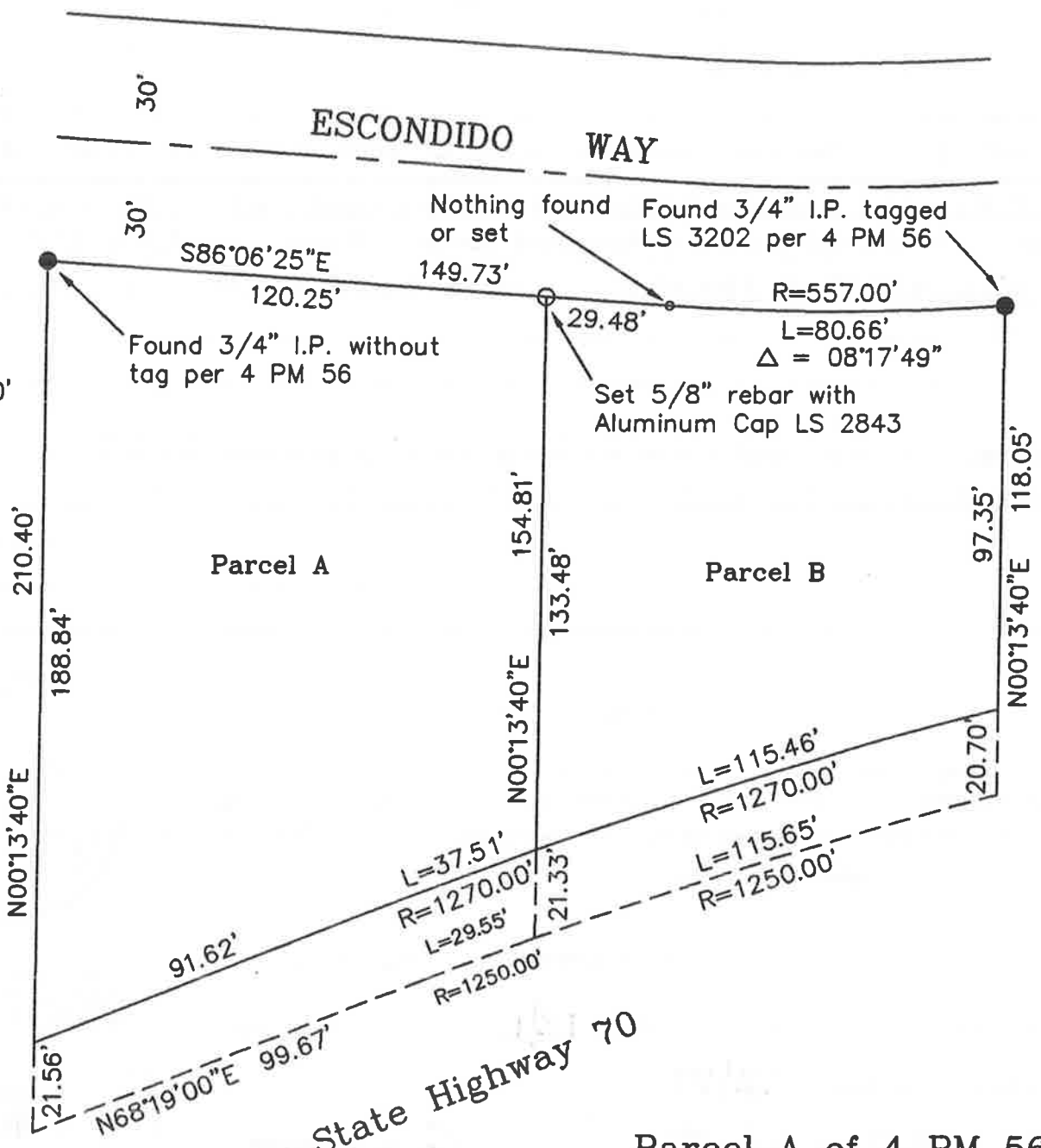
Signed R Tom Shuter Title Co Surveyor



County Surveyor's Comment _____



1" = 40'



Parcel A of 4 PM 56
 Portion of SE 1/4 of Section 34
 T. 23 N., R. 13 E., M.D.M.
 Plumas County ~ California

Hamby Surveying Inc.
 P.O. Box 1209
 Portola, CA 96122
 (916) 832-5571