

April 9, 1998



Plumas County Engineering Department
County of Plumas
520 Main Street, Room 120
Quincy Ca, 95971-9377

Attention Sr. Eng. Tech. John Pullan:

Dear John:

After further review of the field work and calculations associated with the position of monuments set under corner record forms document numbers 118,119,120 and 121, I concur with your office that the corner record form is inappropriate for this activity.

As I discussed with your office, on April 6 & 7, 1998 I removed all the points covered in the above corner records except the following: On document 119 the PK nail set for point 1652 and the rebar set for point 1657 were not found. On document 120 the rebar set for point 591A was not found. On document 121 the rebar set for point 1206A was not found. A diligent search was made for each of them. They may have been disturbed by grading, snow removal or another outside agency. If any of these points are recovered in the future, by this letter, I give my permission that they may be removed.

Your office may nullify, supersede or otherwise cancel documents 118,119, 120 and 121. I hope this will not cause a large disruption in your record keeping.

Please feel free to share this letter with any interested party. And once again, I regret any inconvenience this may have caused your office.

Please call me at (916) 923-7004, if you wish, to discuss this matter further.

Sincerely

A handwritten signature in blue ink that reads 'Don P. Messman'. The signature is written in a cursive style with a large, flowing 'D' and 'M'.

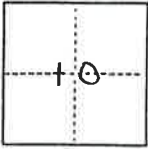
Don P. Messman LS 5949

CORNER RECORD

COUNTY OF Plumas T. 27 N R. 8 E MOUNT DIABLO MERIDIAN CALIFORNIA

CORNER TYPE: GOVT. CORNER MEANDER RANCHO CONTROL OTHER

CORNER IDENTIFICATION — DATE OF VISIT DECEMBER 1 19 96



CORNER — LEFT AS FOUND FOUND AND TAGGED REESTABLISHED OBLITERATED CORNER REBUILT

PHYSICAL DESCRIPTION OF CORNER FOUND; EVIDENCE AND METHOD USED TO IDENTIFY OR REESTABLISH

USED FOUND CORNERS AS SHOWN ON RECORD OF SURVEY OF 4500' CONTOUR OF LAKE ALMANDOR BOOK 2, PAGE 47, SHEET 10 TO RESET CORNERS;
 #1206A, #1207, #1208, #1209, #1210, #1211, #1213, #1214, #1214A, #1215, #1215A

PHYSICAL DESCRIPTION OF MONUMENTS REBUILT OR PERPETUATED

SET 5/8" REBAR w/ PLASTIC CAP L.S. 5949



CALIFORNIA COORDINATE SYSTEM ORDER: FIRST SECOND THIRD
 STATIONS USED: NGS (USC & GS) STATE COUNTY OTHER STATION _____
 ZONE _____ ELEVATION _____ NORTHINGS (Y) _____ EASTINGS (X) _____

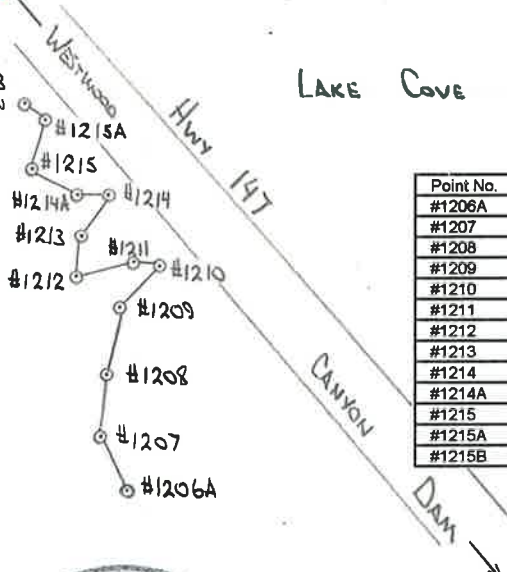
SKETCH: (Include reference tie or witness points, remarks and topo of area)

#1234 ○ Fo 5/8" IRON PIN

#1226 ○ Fo 3/4" IRON PIN



LAKE ALMANDOR



LAKE COVE AREA

Point No.	Bearing	Distance
#1206A	N 22° 22' 30" W	65.98'
#1207	N 00° 57' 00" E	60.53'
#1208	N 13° 38' 00" E	85.70'
#1209	N 35° 02' 30" E	57.00'
#1210	N 77° 03' 00" W	32.18'
#1211	N 75° 37' 00" W	62.53'
#1212	N 14° 37' 30" E	53.06'
#1213	N 35° 28' 30" E	46.42'
#1214	N 77° 51' 00" W	41.12'
#1214A	N 57° 41' 30" W	49.20'
#1215	N 11° 14' 45" E	62.98'
#1215A	N 51° 50' 15" W	20.63'
#1215B	S 52° 01' 30" W	109.95'

SURVEYOR'S CERTIFICATE

THIS CORNER RECORD WAS PREPARED BY ME OR UNDER MY DIRECTION IN CONFORMANCE WITH THE LAND SURVEYORS ACT ON JAN. 23 19 96

SIGNED: D. P. Meesmer
 L.S. or R.C.E. No.: 5949



COUNTY SURVEYOR'S CERTIFICATE

THE CORNER RECORD WAS RECEIVED 1/25 19 96 AND EXAMINED AND FILED 2/20 19 96

BY R. Tom Spurr
 TITLE: Co. Surveyor

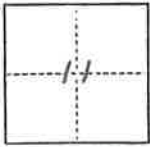
DOCUMENT No. 121

STATEMENT ON BACK OF SHEET

CORNER RECORD

COUNTY OF Plumas T. 27 N R. 7 E MOUNT DIABLO MERIDIAN CALIFORNIA

CORNER TYPE: GOV'T. CORNER MEANDER RANCHO CONTROL OTHER
 CORNER IDENTIFICATION — DATE OF VISIT OCTOBER 24 1995



CORNER — LEFT AS FOUND FOUND AND TAGGED REESTABLISHED OBLITERATED CORNER REBUILT

PHYSICAL DESCRIPTION OF CORNER FOUND; EVIDENCE AND METHOD USED TO IDENTIFY OR REESTABLISH

USED FOUND CORNERS AS SHOWN ON RECORD OF SURVEY OF 4500' CONTOUR OF LAKE ALMANOR
 BOOK 2 PAGE 47 SHEET 13 TO RESET CORNERS #594, #593, #592, #591A

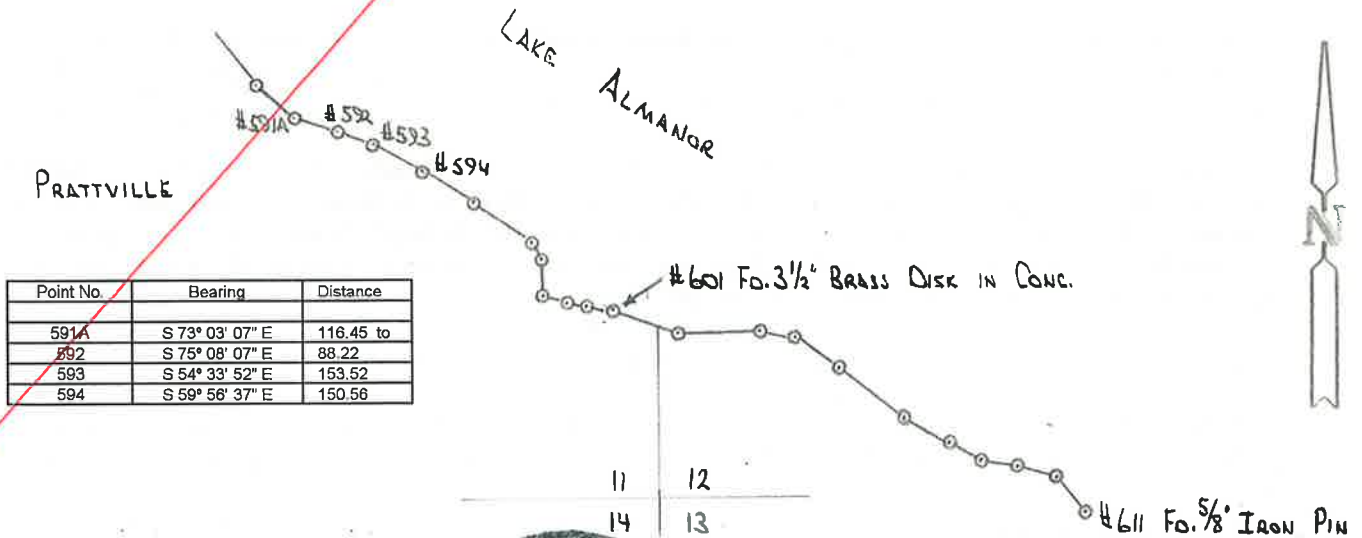
PHYSICAL DESCRIPTION OF MONUMENTS REBUILT OR PERPETUATED

SET 1/2" REBAR W/ PLASTIC CAP L.S. 5949 (CORS. #591A, #593, #594)
 SET NAIL SHINER IN DECK @ #592



CALIFORNIA COORDINATE SYSTEM ORDER: FIRST SECOND THIRD
 STATIONS USED: NGS (USC & GS) STATE COUNTY OTHER STATION _____
 ZONE _____ ELEVATION _____ NORTHINGS (Y) _____ EASTINGS (X) _____

SKETCH: (Include reference tie or witness points, remarks and topo of area)



Point No.	Bearing	Distance
591A	S 73° 03' 07" E	116.45 to
592	S 75° 08' 07" E	88.22
593	S 54° 33' 52" E	153.52
594	S 59° 56' 37" E	150.56

SURVEYOR'S CERTIFICATE

THIS CORNER RECORD WAS PREPARED BY ME OR UNDER MY SUPERVISION AND IN
 DIRECTION IN CONFORMANCE WITH THE LAND SURVEYING ACT
 ON NOV. 10 1995

SIGNED: Don P. Messman
 L.S. or R.C.E. No.: 5949



COUNTY SURVEYOR'S CERTIFICATE

THE CORNER RECORD WAS RECEIVED 1/25 1996
 AND EXAMINED AND FILED 2/20 1996

BY: R. Tom Hunter
 TITLE: Co. Surveyor

DOCUMENT No. 120

STATEMENT ON BACK OF SHEET

SEAL

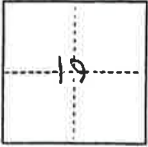
YES NO

CORNER RECORD

COUNTY OF Plumas T. 28 N R. 8 E MOUNT DIABLO MERIDIAN CALIFORNIA

CORNER TYPE: GOV'T. CORNER MEANDER RANCHO CONTROL OTHER

CORNER IDENTIFICATION — DATE OF VISIT OCTOBER 31 1995



CORNER — LEFT AS FOUND FOUND AND TAGGED REESTABLISHED OBLITERATED CORNER REBUILT

PHYSICAL DESCRIPTION OF CORNER FOUND; EVIDENCE AND METHOD USED TO IDENTIFY OR REESTABLISH

USED FOUND CORNERS AS SHOWN ON RECORD OF SURVEY OF 4500' CONTOUR OF LAKE ALMANOR
BOOK 2 PAGE 47 SHEET 13 TO RESET CORNERS #1649 THRU #1664

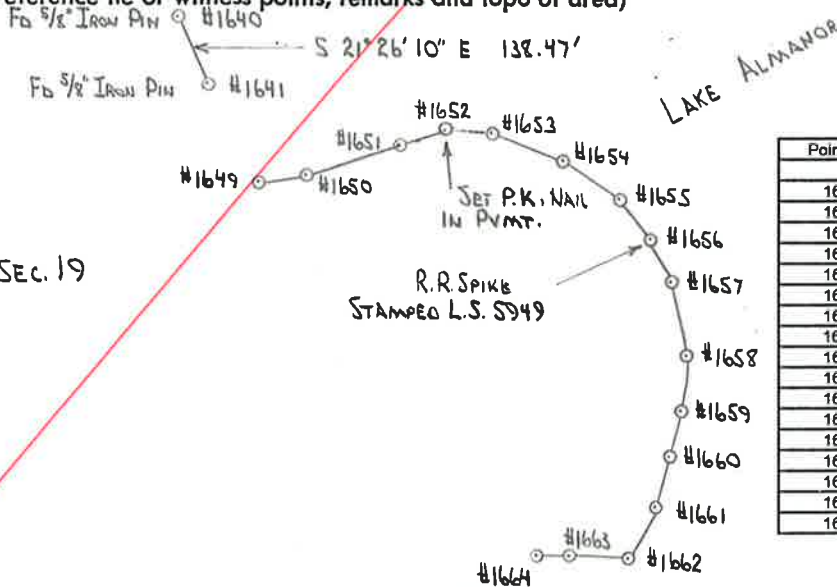
PHYSICAL DESCRIPTION OF MONUMENTS REBUILT OR PERPETUATED

SET 5/8" REBAR W/ PLASTIC CAP L.S. 5949
(EXCEPT AS NOTED BELOW)



CALIFORNIA COORDINATE SYSTEM ORDER: FIRST SECOND THIRD
STATIONS USED: NGS (USC & GS) STATE COUNTY OTHER STATION _____
ZONE _____ ELEVATION _____ NORTHINGS (Y) _____ EASTINGS (X) _____

SKETCH: (Include reference tie or witness points, remarks and topo of area)



Point No.	Bearing	Distance
1648	S 32° 16' 25" E	68.92 to
1649	N 88° 24' 05" E	83.50
1650	N 64° 26' 20" E	188.74
1651	N 76° 23' 20" E	72.40
1652	N 81° 32' 50" E	70.70
1653	S 67° 21' 55" E	129.75
1654	S 57° 31' 40" E	106.22
1655	S 39° 23' 40" E	87.15
1656	S 28° 17' 45" E	80.15
1657	S 15° 35' 30" E	126.95
1658	S 09° 08' 45" W	91.47
1659	S 11° 38' 30" W	76.58
1660	S 11° 38' 30" W	105.00
1661	S 34° 20' 30" W	87.40
1662	S 85° 04' 30" W	105.42
1663	S 87° 07' 00" W	45.96
1664	S 52° 22' 15" W	64.62



SURVEYOR'S CERTIFICATE

THIS CORNER RECORD WAS PREPARED BY ME OR UNDER MY DIRECTION IN CONFORMANCE WITH THE LAND SURVEYORS ACT ON JAN. 23 1996

SIGNED: Don P. Meseremo
L.S. or R.C.E. No.: 5949



COUNTY SURVEYOR'S CERTIFICATE

THE CORNER RECORD WAS RECEIVED 1/25 1996 AND EXAMINED AND FILED 2/20 1996

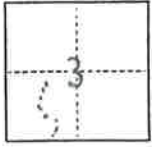
BY: R. Tom Stanton
TITLE: Co. Surveyor

DOCUMENT No. 119

STATEMENT ON BACK OF SHEET

CORNER RECORD

COUNTY OF Plumas T. 27 N R. 8 E MOUNT DIABLO MERIDIAN CALIFORNIA
 CORNER TYPE: GOV'T. CORNER MEANDER RANCHO CONTROL OTHER
 CORNER IDENTIFICATION — DATE OF VISIT DECEMBER 2 1995



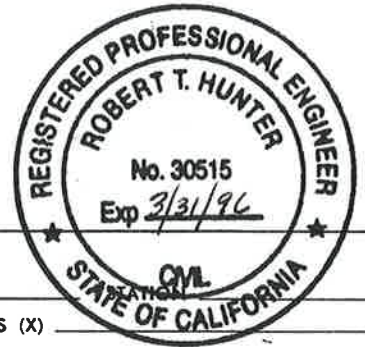
CORNER — LEFT AS FOUND FOUND AND TAGGED REESTABLISHED OBLITERATED CORNER REBUILT

PHYSICAL DESCRIPTION OF CORNER FOUND; EVIDENCE AND METHOD USED TO IDENTIFY OR REESTABLISH

USED FOUND CORNERS AS SHOWN ON RECORD OF SURVEY OF 4500' CONTOUR OF LAKE ALMANOR
 BOOK 2 PAGE 47 SHEET 11 TO RESET CORNERS #1251, #1252, #1252A, #1253.

PHYSICAL DESCRIPTION OF MONUMENTS REBUILT OR PERPETUATED

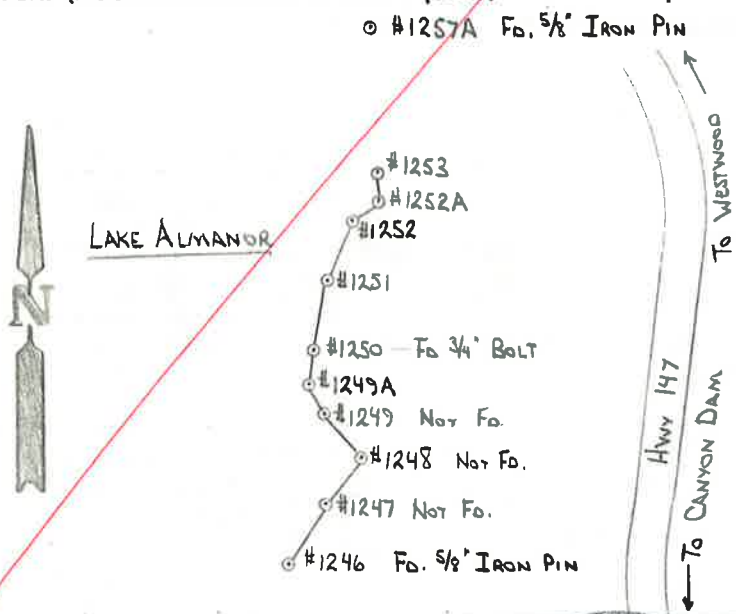
SET 5/8" REBAR w/ PLASTIC CAP L.S. 5949



CALIFORNIA COORDINATE SYSTEM ORDER: FIRST SECOND THIRD
 STATIONS USED: NGS (USC & GS) STATE COUNTY OTHER STATION _____
 ZONE _____ ELEVATION _____ NORTHINGS (Y) _____ EASTINGS (X) _____

SKETCH: (Include reference tie or witness points, remarks and topo of area)

3



Point No.	Bearing	Distance
#1246	N 31° 14' 30" E	81.10' to
#1247	N 37° 19' 30" E	65.05'
#1248	N 37° 40' 30" W	58.93'
#1249	N 23° 59' 45" W	33.21'
#1249A	N 03° 53' 45" E	37.04'
#1250	N 09° 33' 45" E	79.49'
#1251	N 15° 58' 15" E	82.80'
#1252	N 60° 57' 15" E	27.69'
#1252A	N 06° 32' 15" E	23.70'
#1253	N 51° 43' 15" W	80.13'

SURVEYOR'S CERTIFICATE

THIS CORNER RECORD WAS PREPARED BY ME OR UNDER MY DIRECTION IN CONFORMANCE WITH THE LAND SURVEYORS ACT ON DECEMBER 2 1995

SIGNED: D.P. Messmer

L.S. or R.C.E. No.: 5949



COUNTY SURVEYOR'S CERTIFICATE

THE CORNER RECORD WAS RECEIVED 1/25 1996 AND EXAMINED AND FILED 2/20 1996

BY: R. Tom Spitzer

TITLE: Co. Surveyor

DOCUMENT No. 118

STATEMENT ON BACK OF SHEET

YES NO