

CORNER RECORD

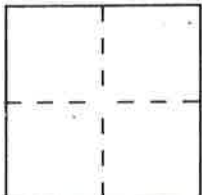
DPD-3011 (NEW 11/93)

Document Number 122

City of PORTOLA

County of PLUMAS, California

Brief Legal Description T.23N.R.13E. SEC. 36



CORNER TYPE

Government Corner Control
Meander Property
Rancho Other
Date of Survey 9/14/95

Coordinates (Optional)

N. _____
E. _____
Zone I NAD: '27 '83 _____
NAD-83 Epoch _____
Elevation _____

Corner — Left as found Found and tagged Established Reestablished Rebuilt

Identification and type of corner found: Evidence used to identify or procedure used to establish or reestablish the corner:

LOCATED PROP. COR. 19, A 3/4" I.P. W/NO TAG, IN MARCH 1992.
LOCATED PROP. COR. 45, A 3/4" I.P. W/NO TAG, IN MARCH 1992.
LOCATED PROP. COR. 47, A 3/4" I.P. W/NO TAG IN MARCH 1992.

A description of the physical condition of the monument as found and as set or reset: _____

PROP. COR'S. 19 & 47 WERE DESTROYED BY CONSTRUCTION. RESET 1 1/2" COPPER DISCS MKD. "CALTRANS" ON 9-14-95.
PROP. COR. 45 WAS DESTROYED BY CONSTRUCTION. RESET A 1 1/2" ALUM. CAP MKD. "CALTRANS" ON A 3/4" REBAR ON 9-14-95.

SURVEYOR'S STATEMENT

This Corner Record was prepared by me or under my direction in conformance with the Land Surveyors' Act on JANUARY 4 1996.

Signed Victor M. McLeod L.S. or R.C.E. Number LS 6120
For the State of California
Department of Transportation



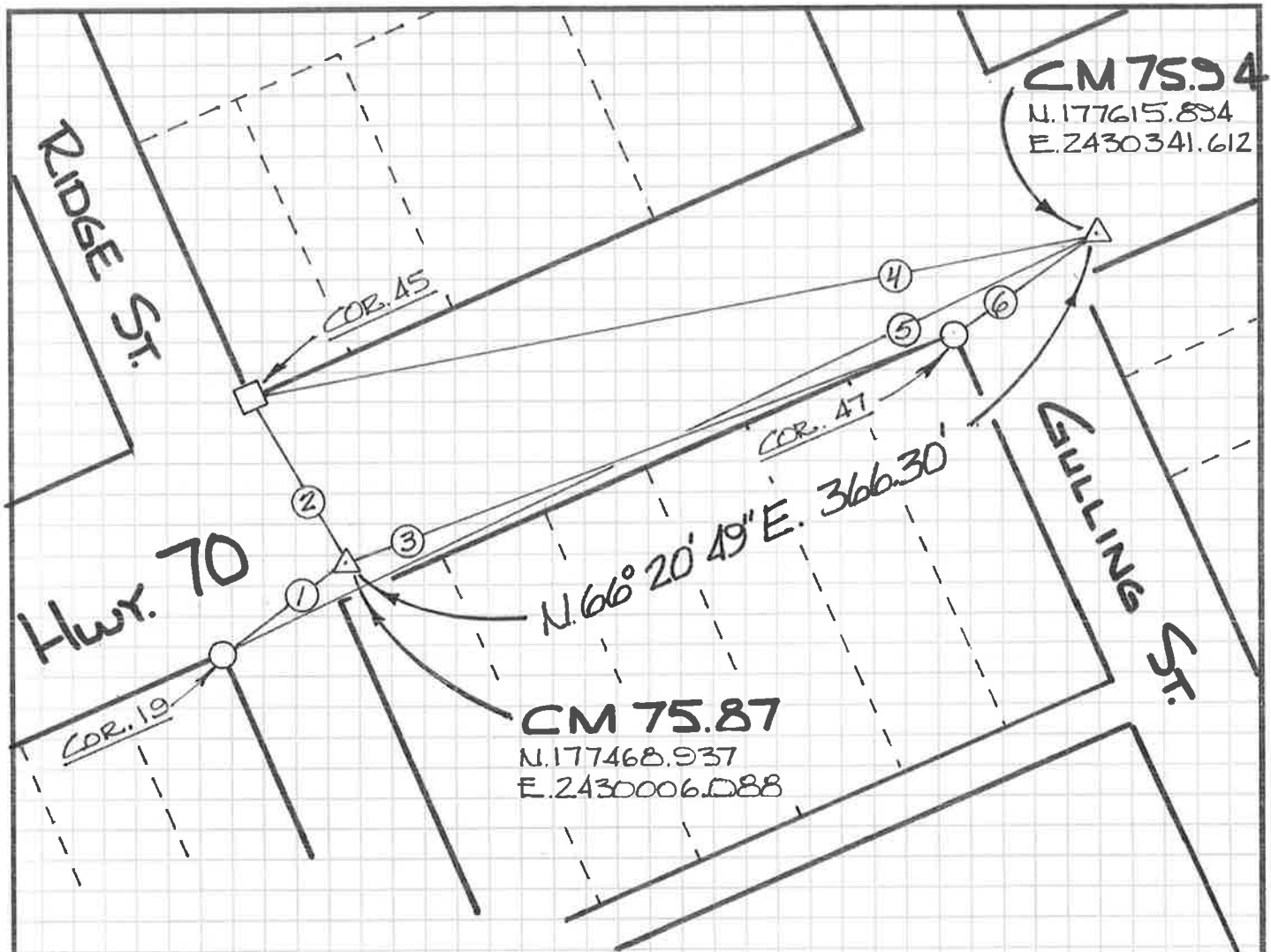
COUNTY SURVEYOR'S STATEMENT

This Corner Record was received 2/2 1996 and examined and filed 2/20 1996.

Signed R. Tom Hunter Title Co. Surveyor



County Surveyor's Comment _____



- ① S. 61° 39' 49" W. 60.41'
- ② N. 23° 55' 40" W. 94.91'
- ③ N. 67° 03' 00" E. 299.81'
- ④ S. 80° 51' 20" W. 378.83'
- ⑤ S. 65° 41' 04" W. 426.53'
- ⑥ S. 62° 43' 57" W. 66.65'

LEGEND

- △ A DEPT. OF TRANS. BRASS DISC CONTROL LINE MONUMENT.
- SET 1 1/8" COPPER DISC MKD. "CALTRANS". REPLACES A 3/4" I.P. W/NO TAG PER 7RS 78 AND/OR 5RS 103.
- SET 3/4" REBAR W/1 1/2" ALUM. CAP MKD. "CALTRANS". REPLACES A 3/4" I.P. W/TAG MKD. "LS 2843" PER 9RS 113.

NOTE:

UNLESS NOTED OTHERWISE ALL BEARINGS AND DISTANCES SHOWN HEREON ARE GRID. TO OBTAIN GROUND LEVEL DISTANCES MULTIPLY GRID BY 1.0001797. $\Delta = 1^{\circ}00'13''$.



NTS

YAK