

CORNER RECORD

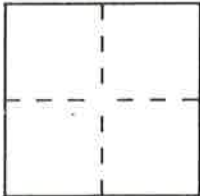
DPD-3011 (NEW 11/93)

Document Number 123

City of PORTOLA

County of PLUMAS, California

Brief Legal Description T. 23N., R. 13E., M.D.M., SEC. 36.



CORNER TYPE

Government Corner Control
Meander Property
Rancho Other
Date of Survey 9/14/95

Coordinates (Optional)

N. _____
E. _____
Zone I NAD: '27 '83
NAD-83 Epoch _____
Elevation _____

Corner — Left as found Found and tagged Established Reestablished Rebuilt

Identification and type of corner found: Evidence used to identify or procedure used to establish or reestablish the corner:

LOCATED PROP. COR. 52, A 1/2" IRON ROD (NOT OF RECORD), IN MARCH 1992.
LOCATED PROP. COR. 53, A 1/2" REBAR (NOT OF RECORD) IN MARCH 1992.
LOCATED PROP. COR. 55 A 5/8" REBAR W/PLAS. CAP MKD. "LS2843" PER 8RS 107 IN MARCH '92

A description of the physical condition of the monument as found and as set or reset:

PROP. COR. 52 & 53 WERE DESTROYED BY CONSTRUCTION AND REPLACED BY 1 1/8" COPPER DISCS MKD. "CALTRANS" ON 9-14-95.
PROP. COR. 55 WAS DESTROYED BY CONSTRUCTION AND REPLACED BY A 3/4" REBAR W/ 1 1/2" ALUM. CAP MKD. "CALTRANS" ON 9-14-95.

SURVEYOR'S STATEMENT

This Corner Record was prepared by me or under my direction in conformance with the Land Surveyors' Act on JANUARY 4 1996.

Signed Victor M. McInd L.S. or R.C.E. Number LS 6120
For the State of California
Department of Transportation



COUNTY SURVEYOR'S STATEMENT

This Corner Record was received 2/2 1996 and examined and filed 2/20 1996.

Signed R Tom Hunter Title Co. Surveyor



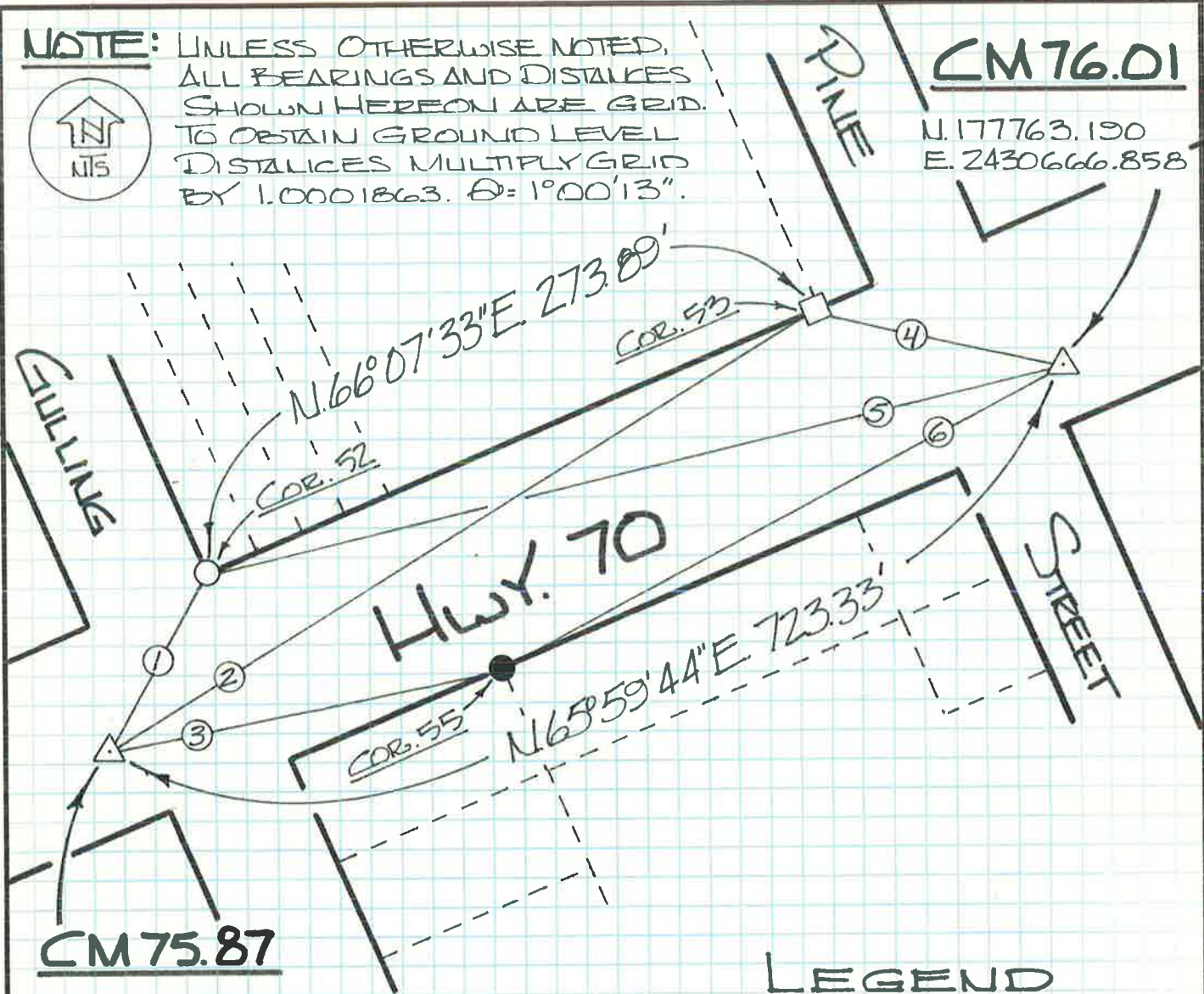
County Surveyor's Comment _____

NOTE: UNLESS OTHERWISE NOTED, ALL BEARINGS AND DISTANCES SHOWN HEREON ARE GRID. TO OBTAIN GROUND LEVEL DISTANCES MULTIPLY GRID BY 1.0001863. $\theta = 1^{\circ}00'13''$.



CM 76.01

N. 177763.190
E. 2430666.858



CM 75.87

N. 177468.937
E. 2430006.089

LEGEND

- △ A DEPT. OF TRANS. BRASS DISC. CONTROL LINE MONUMENT.
- SET A 1 1/8" COPPER DISC MKD. "CALTRANS". REPLACES A 1/2" REBAR. W/NO CAP. (NOT OF RECORD.)
- SET A 3/4" REBAR. W/ 1 1/2" ALUM. CAP MKD. "CALTRANS". REPLACES A 5/8" REBAR. & CAP MKD. "LS 2843" PER 8 RS 107.
- SET A 1 1/8" COPPER DISC MKD. "CALTRANS". REPLACES A 1/2" IRON ROD (NOT OF RECORD.)

①	N. 51° 28' 44" E.	372.90'
②	N. 57° 40' 31" E.	641.64'
③	N. 66° 49' 21" E.	459.80'
④	N. 67° 36' 31" W.	128.23'
⑤	S. 80° 27' 41" W.	374.19'
⑥	S. 64° 33' 14" W.	263.66'

VAK