

CORNER RECORD

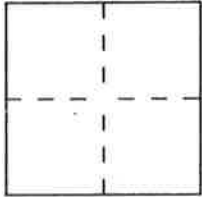
DPD-3011 (NEW 11/93)

Document Number 124

City of PORTOLA

County of PLUMAS, California

Brief Legal Description T.23N., R.13E., M.D.M., SEC. 36



CORNER TYPE

Government Corner Control
 Meander Property
 Rancho Other
 Date of Survey 9/19/95

Coordinates (Optional)

N. _____
 E. _____
 Zone I NAD: '27 '83
 NAD-83 Epoch _____
 Elevation _____

Corner — Left as found Found and tagged Established Reestablished Rebuilt

Identification and type of corner found: Evidence used to identify or procedure used to establish or reestablish the corner:
LOCATED PROP. COR. 71, A 1/2" REBAR, W/PLAS. CAP MKD. "LS 2843" PER. TRS 128,
IN MARCH 1992.

LOCATED PROP. COR. 75, A 3/4" REBAR, W/NO CAP PER. 8 RS 116, IN MARCH 1992.

A description of the physical condition of the monument as found and as set or reset:
PROP. CORNERS 71 & 75 WERE DESTROYED BY CONSTRUCTION. BOTH WERE
REPLACED WITH 3/4" REBARS W/ 1 1/2" ALUM. CAPS MKD. "CALTRANS" ON
9/19/95.

SURVEYOR'S STATEMENT

This Corner Record was prepared by me or under my direction in conformance with the Land Surveyors' Act on JANUARY 16 1996.

Signed Victor M. McLeod L.S. or R.C.E. Number LS 6120
 For the State of California
 Department of Transportation



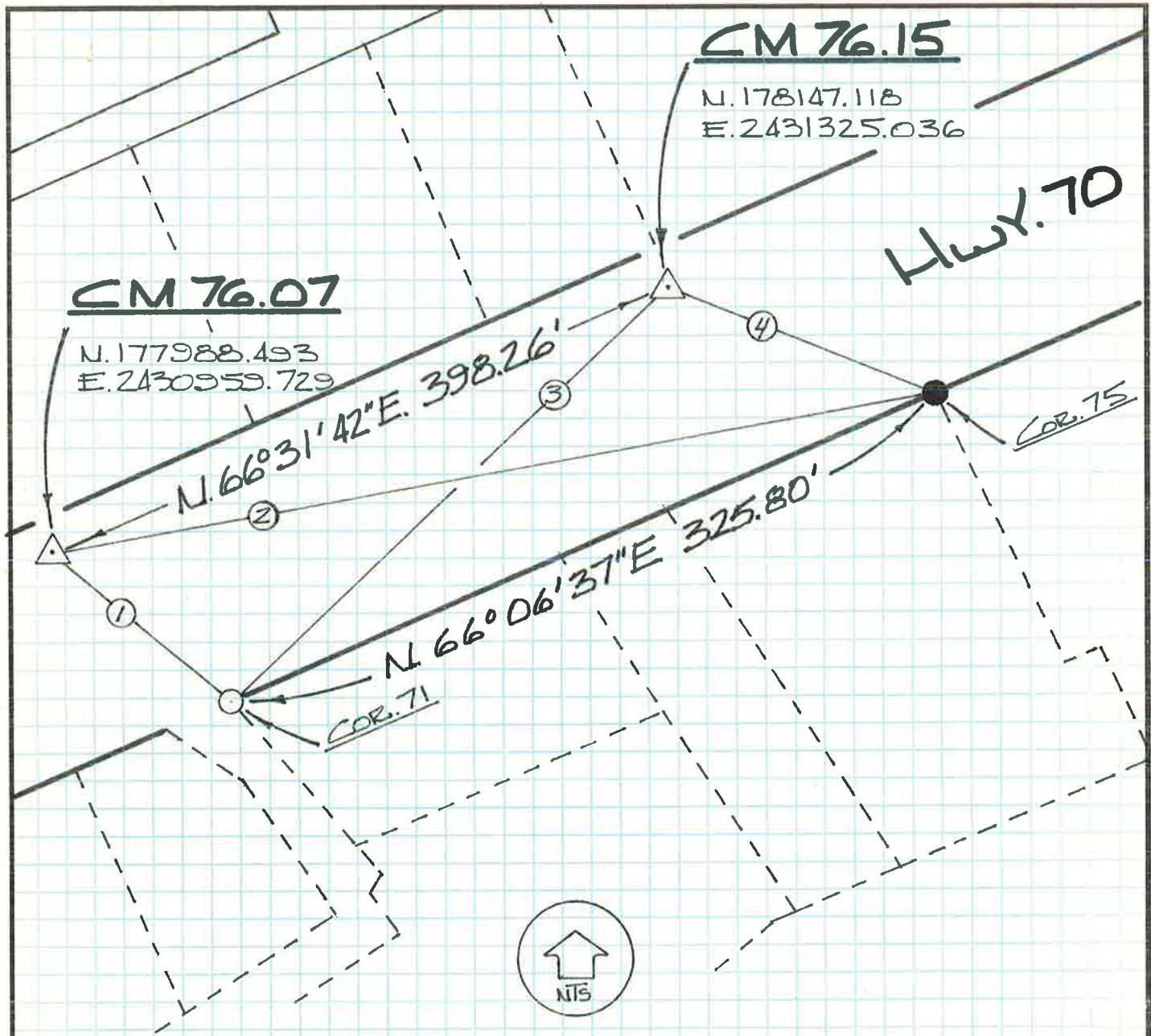
COUNTY SURVEYOR'S STATEMENT

This Corner Record was received 2/2 1996 and examined and filed 2/20 1996.

Signed R. Tom Hunter Title Co. Surveyor



County Surveyor's Comment _____



- ① S. 84°16'04" E. 189.75'
- ② N. 76°55'47" E. 499.64'
- ③ S. 44°49'35" W. 250.37'
- ④ S. 69°23'47" E. 129.68'

△ A DEPT. OF TRANS. BRASS DISC CONTROL LINE MONUMENT.

● SET A 3/4" REBAR W/ 1 1/2" ALUM. CAP MKD. "CALTRANS". REPLACES 3/4" REBAR W/ NO CAPPER, 8 RS 116.

○ SET A 3/4" REBAR W/ 1 1/2" ALUM. CAP MKD. "CALTRANS". REPLACES A 1/2" REBAR W/ PLASTIC CAP MKD. "LS 2843" PER. 7 RS 128.

NOTE:

UNLESS OTHERWISE NOTED ALL BEARINGS AND DISTANCES SHOWN HEREON ARE GRID. TO OBTAIN GROUND LEVEL DISTANCES MULTIPLY GRID BY 1.0001797.