

CORNER RECORD

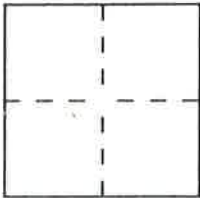
DPD-3011 (NEW 11/93)

Document Number 125

City of PORTOLA

County of PLUMAS, California

Brief Legal Description T.23N., R.13E., M.D.M., SEC 36



CORNER TYPE

- Government Corner
- Meander
- Rancho
- Date of Survey 9/19/95
- Control
- Property
- Other

Coordinates (Optional)

N. \_\_\_\_\_  
 E. \_\_\_\_\_  
 Zone I NAD: '27  '83 \_\_\_\_\_  
 NAD-83 Epoch \_\_\_\_\_  
 Elevation \_\_\_\_\_

Corner — Left as found  Found and tagged  Established  Reestablished  Rebuilt

Identification and type of corner found: Evidence used to identify or procedure used to establish or reestablish the corner:  
LOCATED PROP. COR. 23, A 1/2" REBAR W/PLAS. CAP MKD. "LS2843", PER SPM 82, IN MARCH '92.  
LOCATED PROP. COR. 24, A 1/2" REBAR W/PLAS. CAP MKD. "LS2843", PER SPM 82, IN MARCH '92.  
LOCATED PROP. COR. 69, A NAIL TAG MKD. "LS2843", PER FRS 103, IN MARCH '92.  
LOCATED PROP. COR. 70 A 1/2" REBAR W/PLAS. CAP MKD. "LS2843" IN MARCH '92.

A description of the physical condition of the monument as found and as set or reset: \_\_\_\_\_  
PROPERTY CORNERS 23, 24, 69 & 70 WERE DESTROYED BY CONSTRUCTION.  
ALL WERE REPLACED BY A 3/4" REBAR & 1 1/2" ALUM. CAP MKD. "CALTRANS", ON  
9/19/95.

SURVEYOR'S STATEMENT

This Corner Record was prepared by me or under my direction in conformance with the Land Surveyors' Act on JANUARY 11 1996.

Signed Victor M. McLind L.S. or R.C.E. Number LS 6120  
 For the State of California  
 Department of Transportation



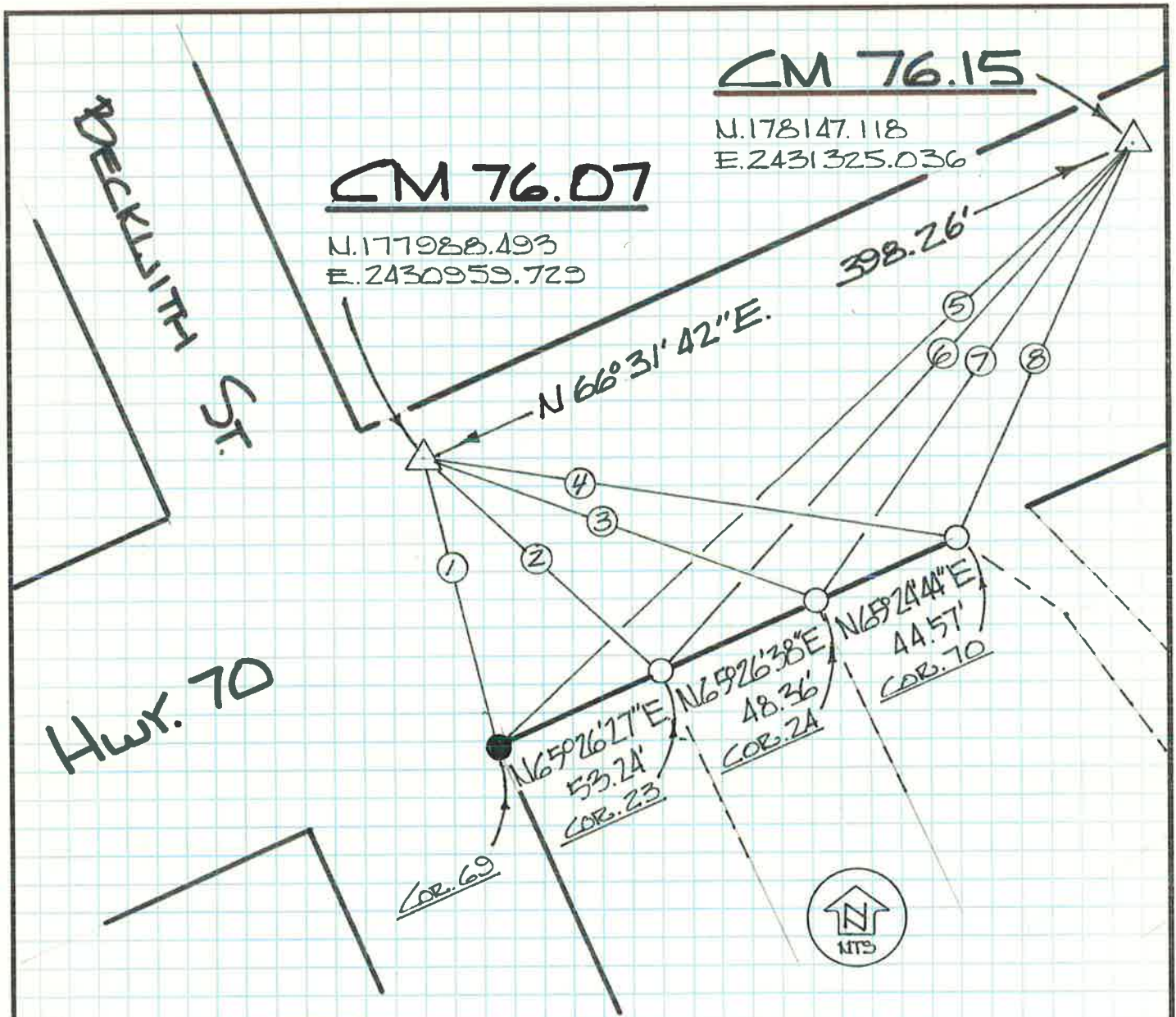
COUNTY SURVEYOR'S STATEMENT

This Corner Record was received 2/2 1996 and examined and filed 2/20 1996.

Signed R. Tom Hunter Title Co. Surveyor



County Surveyor's Comment \_\_\_\_\_



- ① S 22° 21' 44" E. - 95.56'
- ② S 51° 59' 42" E. - 107.59'
- ③ S 70° 16' 59" E. - 136.79'
- ④ S 80° 44' 24" E. - 171.53'
- ⑤ S 53° 05' 54" W. - 411.36'
- ⑥ S 51° 17' 04" W. - 359.53'
- ⑦ S 49° 07' 02" W. - 312.86'
- ⑧ S 46° 27' 58" W. - 270.37'

**NOTE:** ALL BEARINGS AND DISTANCES SHOWN HEREON UNLESS OTHERWISE NOTED ARE GRID. TO OBTAIN GROUND LEVEL DISTANCES MULTIPLY GRID BY 1.0001797.  
 $\Delta = 1^{\circ} 00' 13''$ .

- △ A DEPT. OF TRANS. BRASS DISC CONTROL LINE MON.
- SET 3/4" REBAR, w/ 1/2" ALUM. CAP MKD. "CALTRANS". REPLACES A 1" PLASTIC CAP MKD. "LS 2843". PER 9PM 82.
- SET 3/4" REBAR, w/ 1/2" ALUM. CAP MKD. "CALTRANS". REPLACES A NAIL & TAG MKD. "LS 2843". PER 5R3103.