

CORNER RECORD

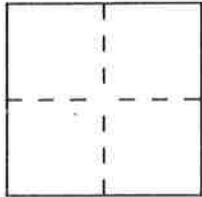
DPD-3011 (NEW 11/93)

Document Number 126

City of PORTOLA

County of PLUMAS, California

Brief Legal Description T. 23N., R. 13 E., M.D.M., SEC 36.



CORNER TYPE

- Government Corner
- Meander
- Rancho
- Date of Survey 9/19/95
- Control
- Property
- Other

Coordinates (Optional)

N. _____
 E. _____
 Zone I NAD: '27 '83
 NAD-83 Epoch _____
 Elevation _____

Corner — Left as found Found and tagged Established Reestablished Rebuilt

Identification and type of corner found: Evidence used to identify or procedure used to establish or reestablish the corner:

LOCATED PROP. COR. 21 A 5/8" REBAR W/CAP MKD. "LS2843" IN MARCH 1992.
LOCATED PROP. COR. 58 A 5/8" REBAR W/CAP MKD. "LS2843" IN MARCH 1992.
LOCATED PROP. COR. 59 A 5/8" REBAR W/CAP MKD. "LS2843" PER. 8RS73 IN MARCH 1992.
LOCATED PROP. COR. 65 A 3/4" I.P. W/NO TAG (NOT OF RECORD) IN MARCH 1992.

A description of the physical condition of the monument as found and as set or reset: PROPERTY CORNERS 21, 58 & 59 WERE DESTROYED BY CONSTRUCTION & REPLACED W/ 3/4" REBAR W/ 1 1/2" ALUM. CAPS MKD. "CALTRANS" ON 9-19-95.
PROP. COR. 65 WAS DESTROYED BY CONST. & REPLACED W/A 1 1/8" COPPER DISC MKD. "CALTRANS" ON 9-19-95.

SURVEYOR'S STATEMENT

This Corner Record was prepared by me or under my direction in conformance with the Land Surveyors' Act on JANUARY 4 1996.

Signed Victor M. Melind L.S. or R.C.E. Number LS 6120
 For the State of California
 Department of Transportation



COUNTY SURVEYOR'S STATEMENT

This Corner Record was received 2/2 1996 and examined and filed 2/20 1996.

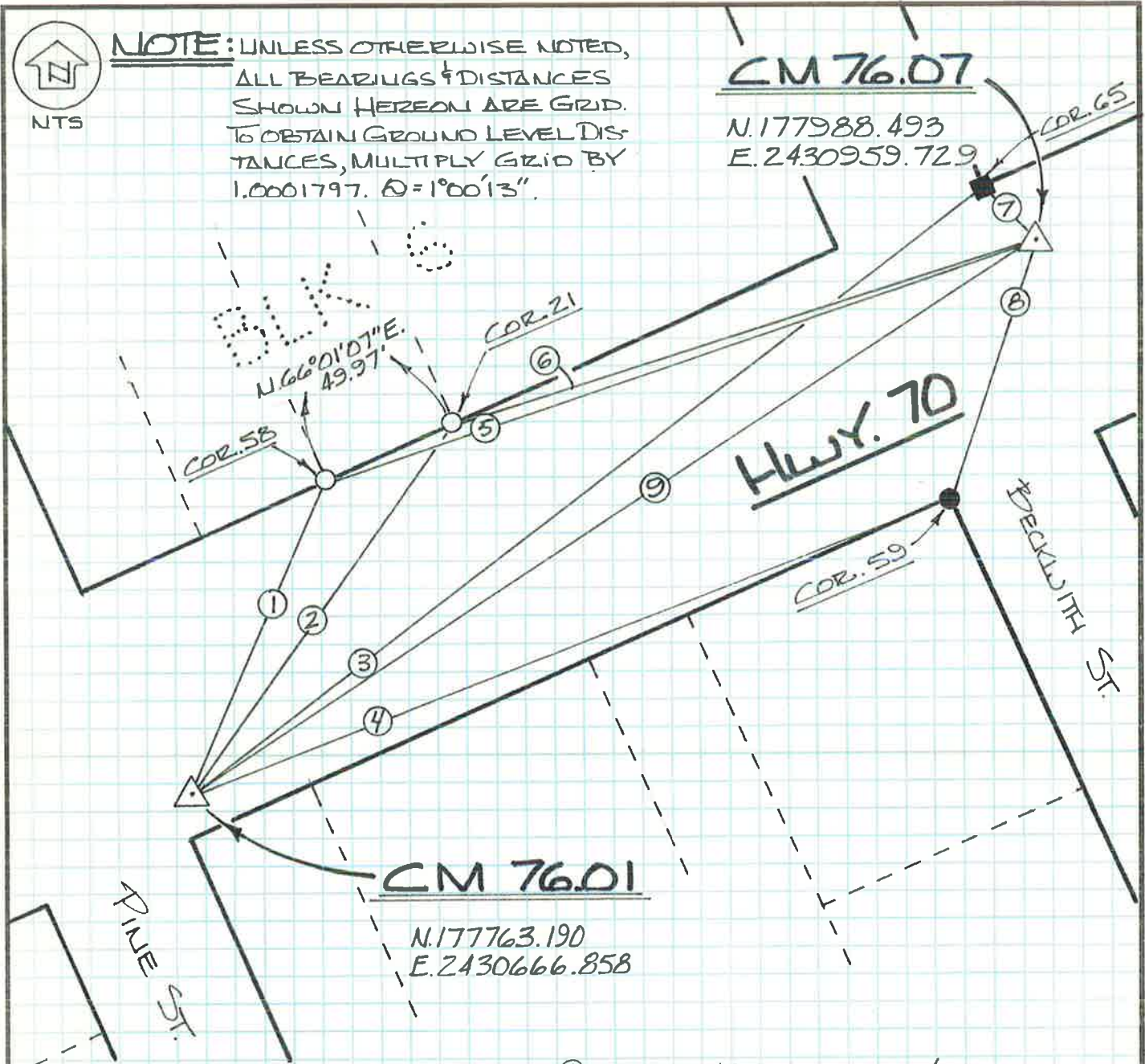
Signed R Tom Hunter Title Co. Surveyor



County Surveyor's Comment _____



NOTE: UNLESS OTHERWISE NOTED,
ALL BEARINGS & DISTANCES
SHOWN HEREON ARE GRID.
TO OBTAIN GROUND LEVEL DIS-
TANCES, MULTIPLY GRID BY
1.0001797. $\Delta = 1^{\circ}00'13''$.



△ DEPT. OF TRANS. BRASS DISC
CONTROL LINE MONUMENT.

● SET 3/4" REBAR W/ 1/2" ALUM.
CAP MKD. "CALTRANS". REPLACES
5/8" REBAR W/ CAP MKD. "LS 2843".
PER 8 RS 73.

■ SET 1 1/8" COPPER DISC MKD.
"CALTRANS". REPLACES A 3/4"
I.P. W/ NO TAG

- | | | |
|---|---------------------|---------|
| ① | N. 22° 12' 27" E. — | 133.91' |
| ② | N. 33° 42' 43" E. — | 173.46' |
| ③ | N. 51° 16' 45" E. — | 368.69' |
| ④ | N. 67° 39' 56" E. — | 296.64' |
| ⑤ | S. 67° 18' 09" W. — | 262.59' |
| ⑥ | S. 67° 36' 15" W. — | 212.64' |
| ⑦ | N. 44° 24' 36" W. — | 7.45' |
| ⑧ | S. 09° 19' 21" W. — | 114.08' |
| ⑨ | N. 52° 25' 45" E. — | 369.51' |

VAK