

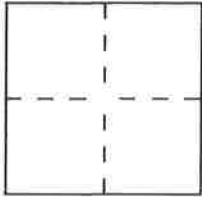
CORNER RECORD

Document Number 129

City of UNINCORPORATED

County of PLUMAS, California

Brief Legal Description PORTION OF SECTION 14, TOWNSHIP 24 NORTH, RANGE 8 EAST, M.B.M.



CORNER TYPE

Government Corner Control
 Meander Property
 Rancho Other
 Date of Survey _____

COORDINATES (Optional)

N. _____
 E. _____
 Zone _____ Datum _____
 Elev. _____

Corner — Left as found Found and tagged Established Reestablished Rebuilt

Identification and type of corner found: Evidence used to identify or procedure used to establish or reestablish the corner:

SEE SKETCH ON PAGE 2

A description of the physical condition of the monument as found and as set or reset: _____

SEE SKETCH ON PAGE 2

SURVEYOR'S STATEMENT

This Corner Record was prepared by me or under my direction in conformance with the Land Surveyors' Act on MAY 16 1996.

Signed Neal P. Campbell L.S. or R.C.E. Number RLS. 4207



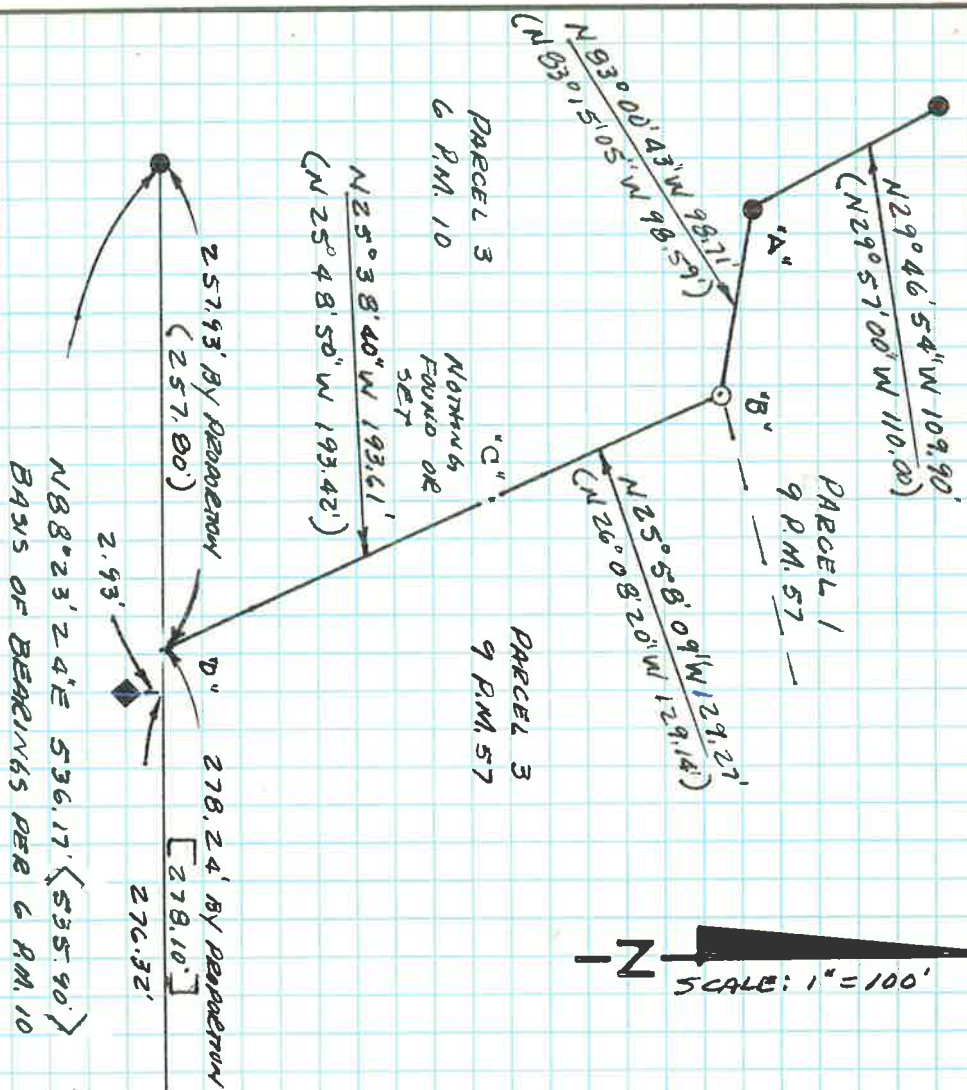
COUNTY SURVEYOR'S STATEMENT

This Corner Record was received May 17 1996 and examined and filed June 27 1996.

Signed R. Tom Smith Title Co. Surveyor



County Surveyor's Comment _____



N
SCALE: 1" = 100'

LEGEND

- - SET 1/2" IRON PIPE TAGGED PLS 4207
- - FOUND 1/2" REBAR TAGGED L53297
- ◆ - FOUND 1/2" REBAR TAGGED BCE 22836
- () - RECORD DATA PER BOOK 6 OF PARCEL MAPS, PAGE 10, PLUMAS COUNTY RECORDS
- [] - RECORD DATA PER BOOK 9 OF PARCEL MAPS, PAGE 57, PLUMAS COUNTY RECORDS
- - COMPUTED FROM RECORD MAPS ABOVE

NOTE
POINTS 'B' AND 'C' ESTABLISHED BY
COMPASS ADJUSTMENT OF RECORD
DATA PER 6 P.M. 10 BETWEEN POINTS
'A' AND 'D'.