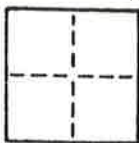


CORNER RECORD

COUNTY OF PLUMAS T. 28N R. R8E MDBM MERIDIAN CALIFORNIA
 CORNER TYPE: GOVT. CORNER MEANDER RANCHO CONTROL OTHER LOT (PROPERTY) CORNER
 CORNER IDENTIFICATION - DATE OF VISIT 7/17 1996



SURVEY OF LOT 37 LAKE ALMANOR PINES
 SUBDIVISION UNIT NO. ONE (PORTION SECTION 19)
 (REF. SUBD. MAPS BOOK 3 P 3) [N.E. CORNER LOT 37]

CORNER - LEFT AS FOUND FOUND AND TAGGED REESTABLISHED OBLITERATED CORNER REBUILT

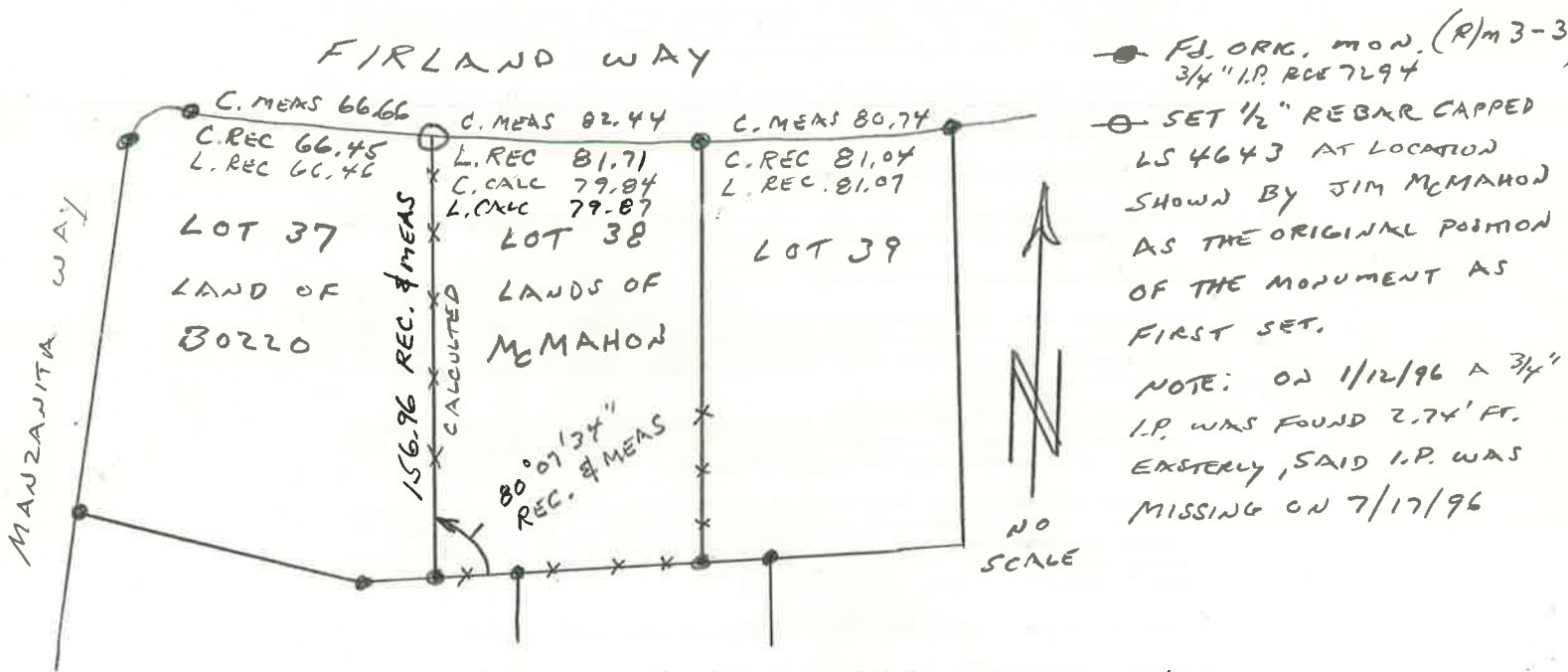
- PHYSICAL DESCRIPTION OF CORNER FOUND; EVIDENCE AND METHOD USED TO IDENTIFY OR REESTABLISH
- 1) USED TESTIMONY OF LAND OWNER (JIM McMAHON)
 - 2) OLD ESTABLISHED STONE AND WOOD FENCE
 - 3) RECORD BEARING AND DISTANCE FROM BACK PROPERTY LINE

PHYSICAL DESCRIPTION OF MONUMENTS REBUILT OR PERPETUATED

SET 1/2" REBAR CAPPED LS 4643 FOR N.E. CORNER LOT 37

CALIFORNIA COORDINATE SYSTEM ORDER: FIRST SECOND THIRD
 STATIONS USED: NGS (USC & GS) STATE COUNTY OTHER STATION _____ STATION _____
 ZONE _____ ELEVATION _____ NORTHINGS (Y) _____ EASTINGS (X) _____

SKETCH: (Include reference tie or witness points, remarks and topo of area)



SURVEYOR'S CERTIFICATE
 THIS CORNER RECORD WAS PREPARED BY ME OR UNDER MY DIRECTION IN CONFORMANCE WITH THE LAND SURVEYORS ACT ON 7/17
 SIGNED: [Signature]
 L.S. or R.C.E. No.: LS 642



COUNTY SURVEYOR'S CERTIFICATE
 THE CORNER RECORD WAS RECEIVED 7/22 1994
 AND EXAMINED AND FILED 7/26 1996
 BY: Tom [Signature]
 TITLE: County Surveyor
 DOCUMENT No. 130

STATEMENT ON BACK OF SHEET YES NO