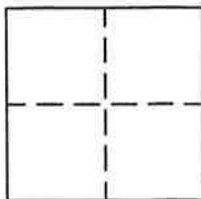


CORNER RECORD

Document Number 133

Located in Section 17, T. 23 N., R. 14 E., M.D.M. County of Plumas, California

Brief Legal Description Lot 2 of Grizzly Creek Acres, 2 RS 13



CORNER TYPE

Government Corner Control
Meander Property
Rancho Other
Date of Survey October 24, 1996

COORDINATES (Optional)

N. _____
E. _____
Zone _____ Datum _____
Elev. _____

Corner- Left as found Found and tagged Established Reestablished Rebuilt

Identification and type of corner found: Evidence used to identify or procedure used to establish or reestablish the corner: Found 1/2" Iron Pipes tagged LS 2702, for the most Northerly and most Easterly corners of Lot 2, from which I reestablished the Witness corners on the North and South lines of said Lot 2 as shown in attached sketch.

A description of the physical condition of the monument as found and as set or reset: Set 5/8" rebar with Aluminum Cap stamped LS 2843 for the Witness corners on the North and South line of said Lot 2 as shown in attached sketch.

SURVEYOR'S STATEMENT

This Corner Record was prepared by me or under my direction in conformance with the Land Surveyors' Act on September 10, 1996.

Signed John W. Hamby L.S. 2843
John W. Hamby



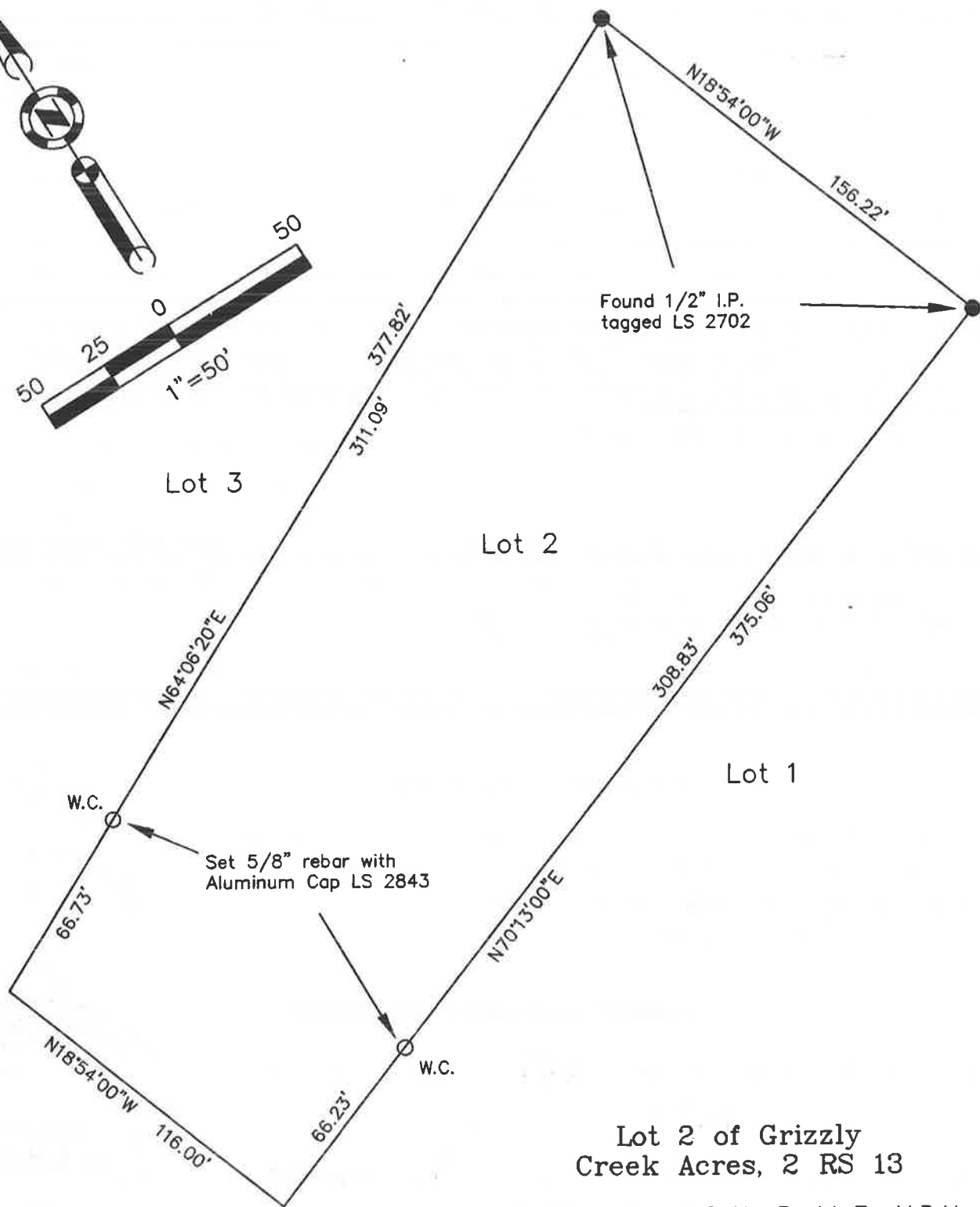
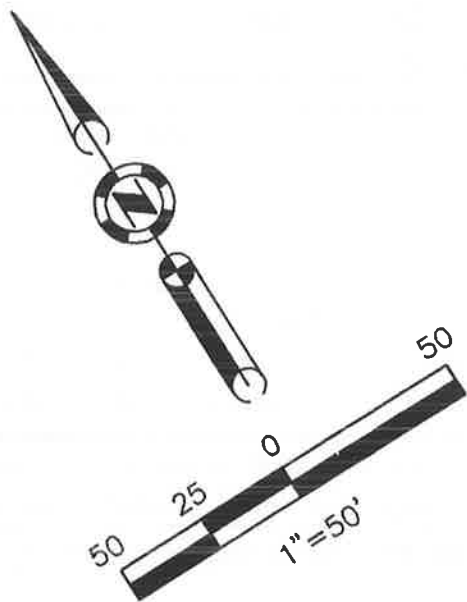
COUNTY SURVEYOR'S STATEMENT

This Corner Record was received 12/9 1996 and examined and filed 12/17 1996.

Signed R. Tom Smith Title Co. Surveyor



County Surveyor's Comment _____



**Lot 2 of Grizzly
Creek Acres, 2 RS 13**

Section 17, T. 23 N., R. 14 E., M.D.M.

Hamby Surveying Inc.
P.O. Box 1209
Portola, CA 96122
(916) 832-5571