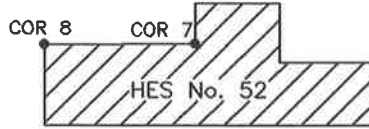


CORNER RECORD

COUNTY OF PLUMAS T. 27 N. R. 5 E. M.D. _____ MERIDIAN CALIFORNIA

CORNER TYPE: GOV'T. CORNER MEANDER RANCHO CONTROL OTHER HOMESTEAD ENTRY SURVEY No. 52

CORNER IDENTIFICATION— DATE OF VISIT JULY 11, 1996



CORNER - LEFT AS FOUND FOUND AND TAGGED REESTABLISHED OBLITERATED CORNER REBUILT

PHYSICAL DESCRIPTION OF CORNER FOUND; EVIDENCE AND METHOD USED TO IDENTIFY OR REESTABLISH (G.L.O.)

Found a 43 1/2" Yellow Pine Bearing Tree, with Healed Blaze. (A 24" Pine, bears S22°30'W, 11 Links)
 No trace of South East Bearing Tree. (A 20" Pine bears S62°20'E, 30 Links)
 Set a Standard U.S.D.A. Monument at Record Bearing and Distance (N22°30'E, 11 Links) from existing Bearing Tree.

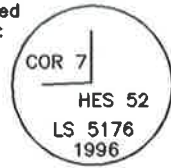
PHYSICAL DESCRIPTION OF MONUMENTS REBUILT OR PERPETUATED

Set a Standard U.S.D.A. Monument [28" long 2 1/2" dia. Aluminum Monument] 22" in ground, 6" above in a 2' dia. stone mound.

New Bearing Trees:

A 12" White Fir bears N51°22'W, 86.41' and scribed 7HES52BT.
 A 11 1/2" Yellow Pine bears N24°10'W, 120.43' and scribed 7HES52BT.

Cap Marked as shown:

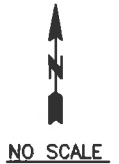
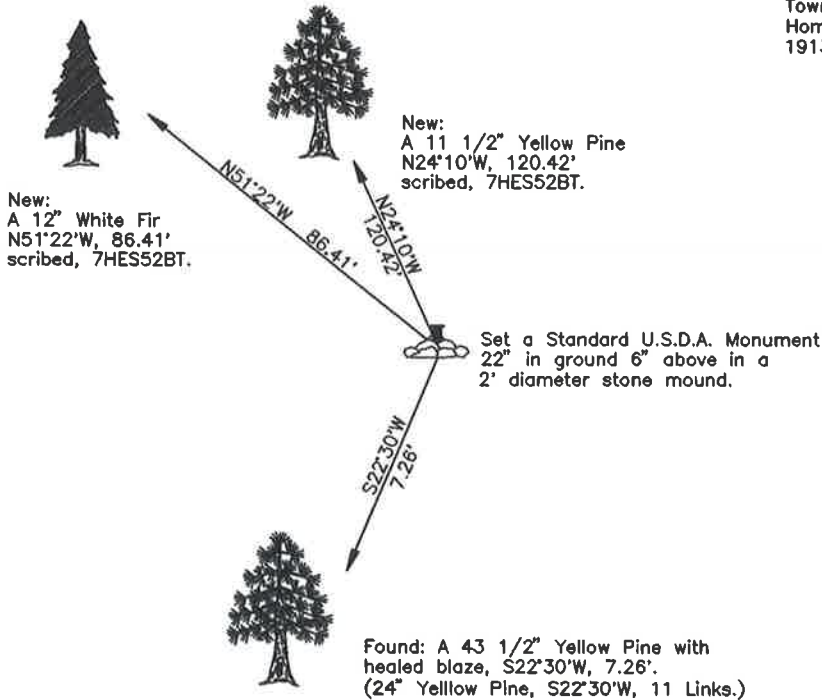


CALIFORNIA COORDINATE SYSTEM ORDER: FIRST SECOND THIRD
 STATIONS USED: NGS (USC & GS) STATE COUNTY OTHER STATION _____ STATION _____
 ZONE _____ ELEVATION _____ NORTHINGS (Y) _____ EASTINGS (X) _____

SKETCH (Include reference tie or witness points, remarks and topo of area)

Note:

Township Unsurveyed
 Homestead Entry Survey No. 52
 1913 G.L.O. Survey



Corner lies approx. 500' North of County road No. 308.
 at the West edge of a meadow,
 on a gentle South slope.

SURVEYOR'S CERTIFICATE

THIS CORNER RECORD WAS PREPARED BY ME OR UNDER MY DIRECTION IN CONFORMANCE WITH THE LAND SURVEYORS ACT ON Dec. 6 1996

SIGNED: _____

L.S. or R.C.E. No.: LS 5176 Expires 12-31-99



COUNTY SURVEYOR'S CERTIFICATE

THE CORNER RECORD WAS RECEIVED 12/10 1996 AND EXAMINED AND FILED 12/17 1996

BY: R. Tom Hunter
 TITLE Co. Surveyor

DOCUMENT No. 136

STATEMENT ON BACK OF SHEET

YES



002-002-001