

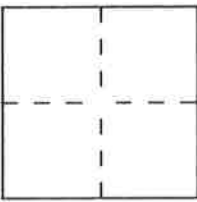
# CORNER RECORD

Document Number 138

City of Unincorporated 28-7-25

County of Plumas, California

Brief Legal Description Lots 10 & 11, Block 6, Lake Almanor Country Club 2, 1 Maps 67-70



### CORNER TYPE

Government Corner  Control   
Meander  Property   
Rancho  Other   
Date of Survey 11/25/96

### COORDINATES (Optional)

N. \_\_\_\_\_  
E. \_\_\_\_\_  
Zone \_\_\_\_\_ Datum \_\_\_\_\_  
Elev. \_\_\_\_\_

Corner — Left as found  Found and tagged  Established  Reestablished  Rebuilt

Identification and type of corner found: Evidence used to identify or procedure used to establish or reestablish the corner:  
See drawing page 2

A description of the physical condition of the monument as found and as set or reset: \_\_\_\_\_  
See drawing page 2

### SURVEYOR'S STATEMENT

This Corner Record was prepared by me or under my direction in conformance with the Land Surveyors' Act on November 25 1996.

Signed Neal P. Campbell L.S. or R.C.E. Number P.L.S. 4207



### COUNTY SURVEYOR'S STATEMENT

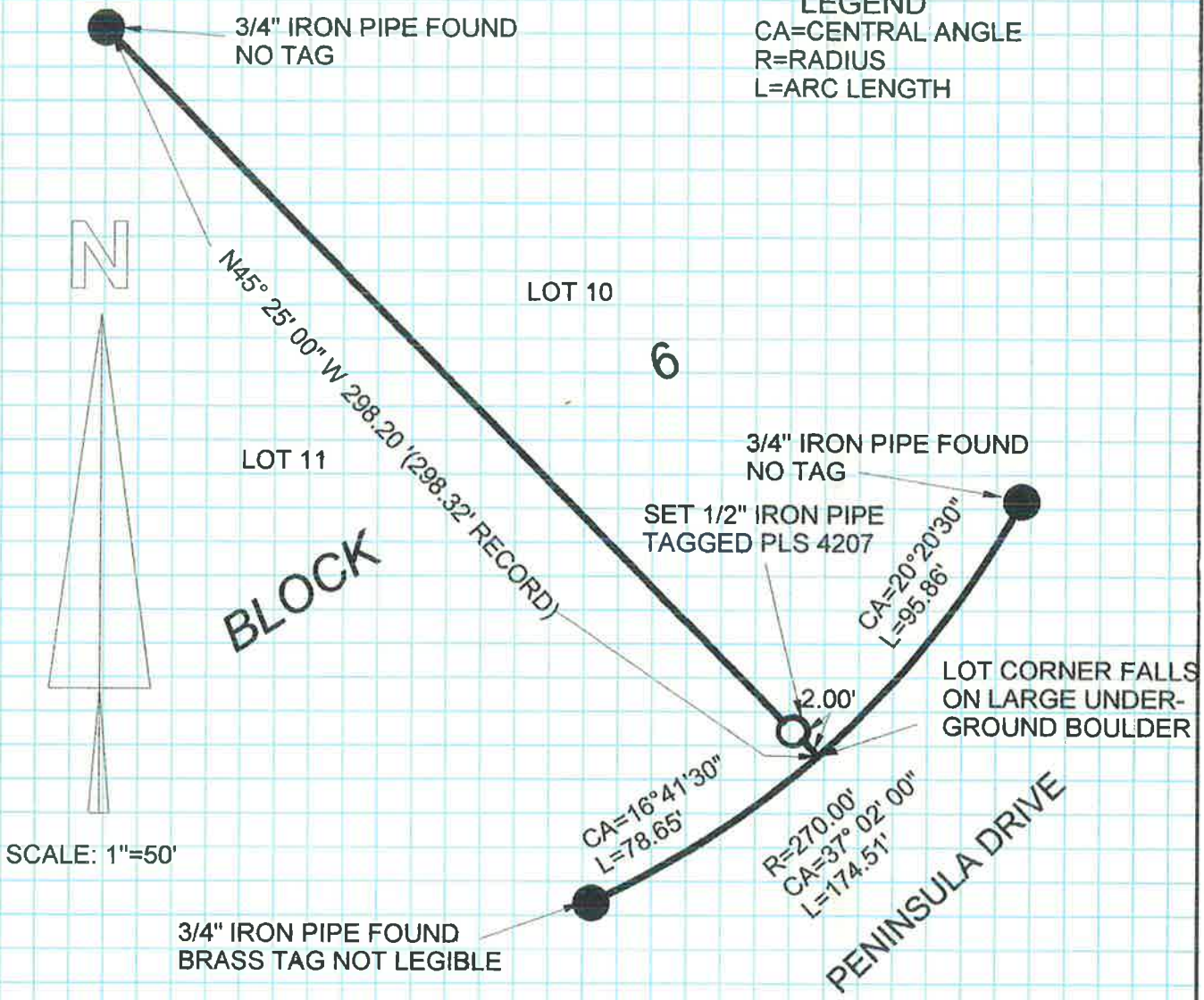
This Corner Record was received 12/10 1996 and examined and filed 12/19 1996.

Signed Tom Hunter Title Co. Surveyor



County Surveyor's Comment \_\_\_\_\_

**LEGEND**  
 CA=CENTRAL ANGLE  
 R=RADIUS  
 L=ARC LENGTH



**LAKE ALMANOR COUNTRY CLUB UNIT 2**

BOOK 1 OF MAPS, PAGES 67-70  
 PLUMAS COUNTY RECORDS

DATE: NOVEMBER 25, 1996  
 FILE: 96133  
 DWG: 96133CR