

CORNER RECORD

COUNTY OF Plumas T. 27 N R. 12 E Mt. Diablo MERIDIAN CALIFORNIA

CORNER TYPE: GOV'L CORNER MEANDER RANCHO CONTROL OTHER

CORNER IDENTIFICATION — DATE OF VISIT Sept 25 1996



CORNER — LEFT AS FOUND FOUND AND TAGGED REESTABLISHED OBLITERATED CORNER RESULT

PHYSICAL DESCRIPTION OF CORNER FOUND, EVIDENCE AND METHOD USED TO IDENTIFY OR REESTABLISH DWR = Department of Water Resources

GLO Notes 1878

Found

GRANITE Stone 14"x12"x6"

K-tag on 16" pine, reading "S 4 1/4 W 8.8 to 1/4 Cor"

PINE 20" N 38° W 71.3'

30" stump. 24" high N 32° W 71.5'

PINE 34" S 75° E 52.8'

Large depression S 75° E 54.0'

References 1 & 2 attached

PHYSICAL DESCRIPTION OF MONUMENTS RESULT OR PERPETUATED

Set 1 1/2" x 30" galvanized pipe with Standard 2 1/2" DWR brass cap attached.

see Exhibit 'A' for complete detail of monument.

CALIFORNIA COORDINATE SYSTEM ORDER: FIRST SECOND THIRD
STATIONS USED: NGS (NCS & GS) STATE COUNTY OTHER STATION _____
ZONE _____ ELEVATION _____ NORTHINGS (N) _____ EASTINGS (E) _____

SKETCH: (Include reference tie or witness points, remarks and topo of area)

Attached - Exhibits 'A' & 'B'

References 1 & 2

(1) U.S. Forest Service, Quincy Corner
Card N-15, dated 6-1-61

(2) Copy DWR field Note dated 6-13-63

SURVEYOR'S CERTIFICATE

THIS CORNER RECORD WAS PREPARED BY ME OR UNDER MY DIRECTION IN CONFORMANCE WITH THE LAND SURVEYORS ACT ON February 7 1997

SIGNED: John E. Coplantz

L.S. or R.C.E. No. 3664



COUNTY SURVEYOR'S CERTIFICATE

THE CORNER RECORD WAS RECEIVED 2/26 1997 AND EXAMINED AND FILED 5/6 1997

BY: B. Tom
TITLE: Co Surveyor

DOCUMENT No. 141

STATEMENT ON BACK OF SHEET

YES NO

141

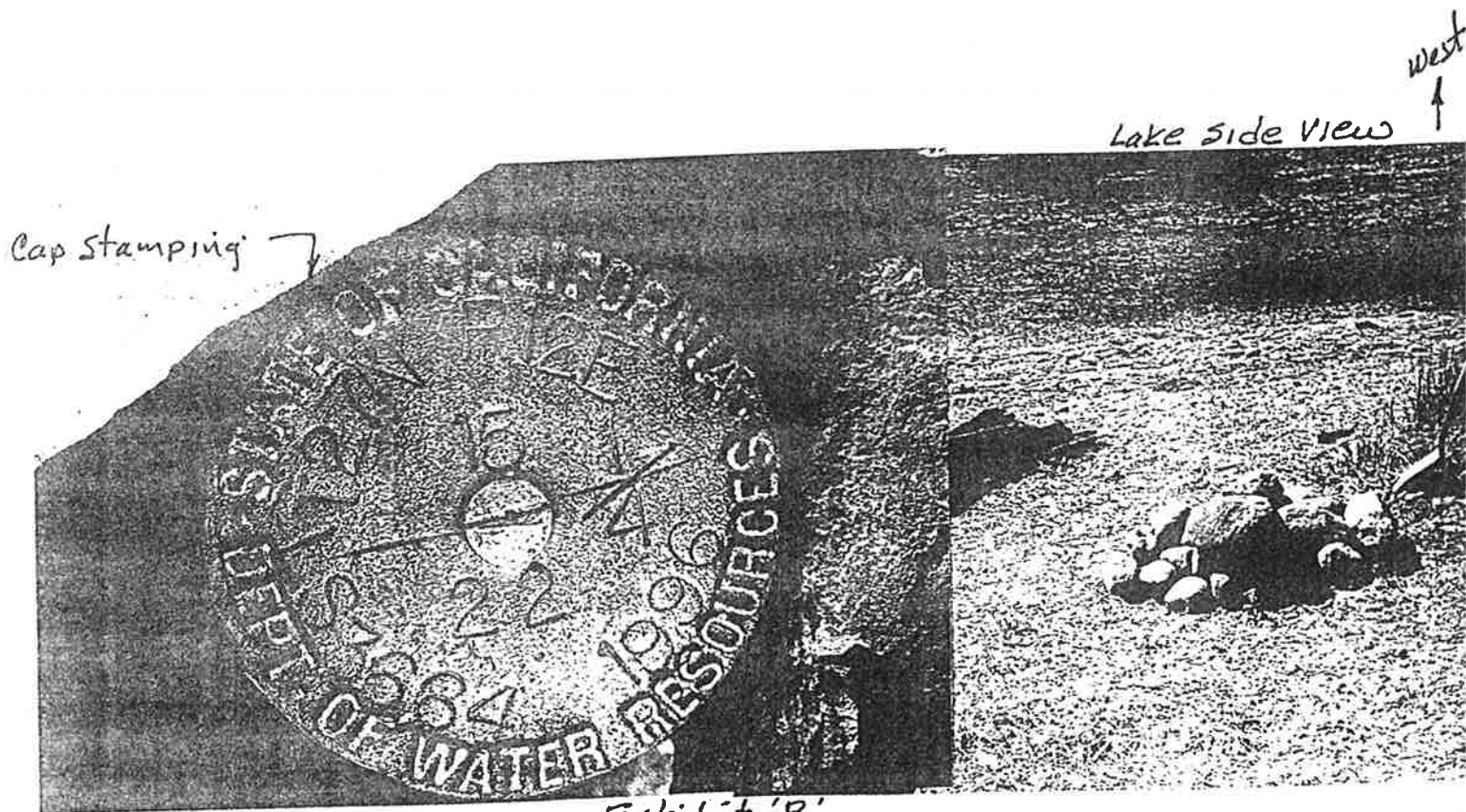
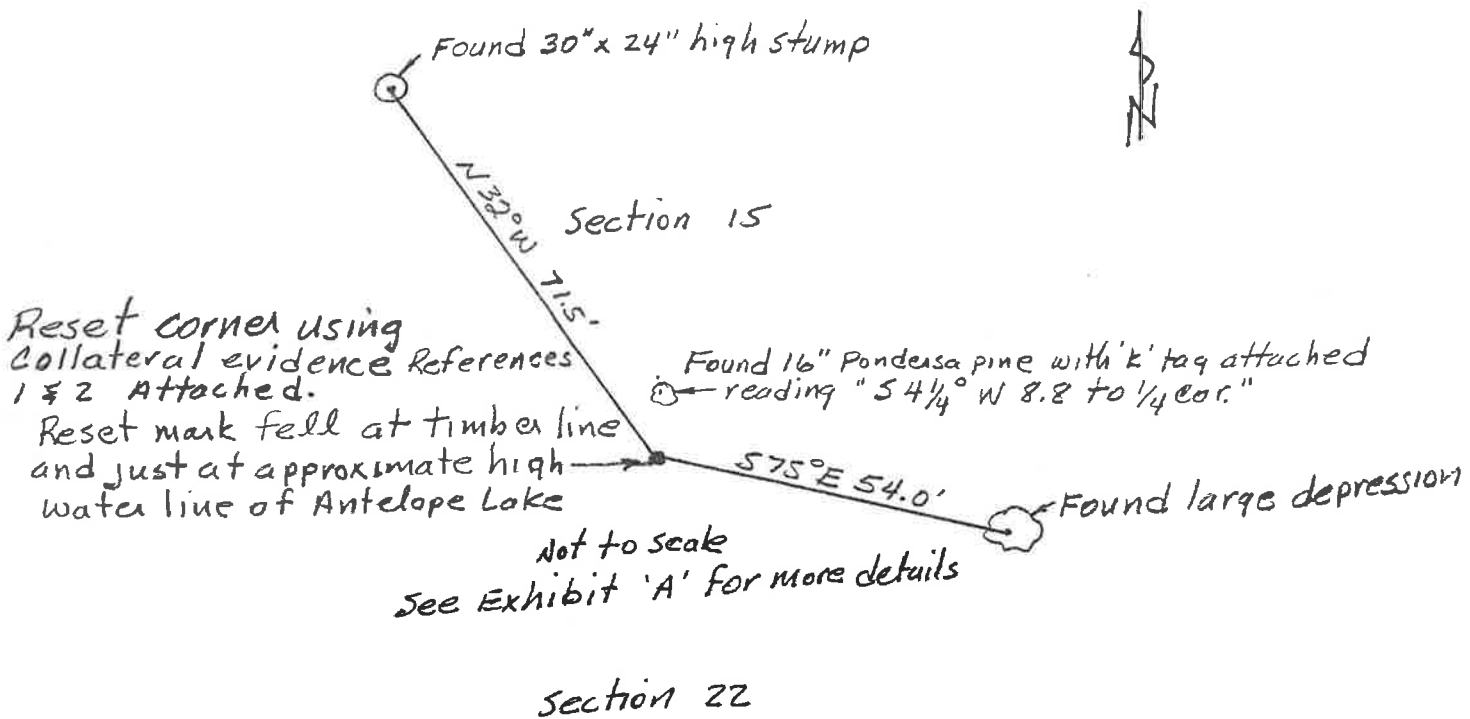
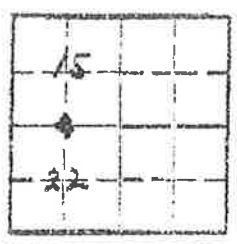


Exhibit 'B'
 Corner between Section 15 & 22
 T27N R12E M.D.M.
 September 1996

2. Corner Status



7. Photo Identification

Photo No. _____
Ident. By: _____

8. Plane Coordinate Position Data

State _____ Zone _____
X _____
Y _____
Etab. By _____
Field Book No. _____
Where Filed _____

9. Evaluation

Authentic
Needs Verif. Monument
Re-estab. Survey
Land Status _____

3. Original Description Vol. _____ Page _____ Where Recorded _____

4. Description of Corners: Original corner was granite stone 18x12x6 in stone mound and two witness trees.

5. Investigation Notes:

Located corner while mending 5000' contour for Antelope Reservoir site. Location postcard located on Indian Creek Road approximately 2000' East of 1/2 corner. Corner is just inside timber line on east side of Lone Rock Creek. One witness tree is dead and down.
This corner should be re-established with pipe and brass cap set in concrete and new witness trees marked which should be some distance east of corner. Reason: corner will probably be on edge of lake and should therefore be firmly set and B.T. should be far enough away to keep from being killed by water. The same contour appears to be level of lake that will be finally decided upon.

6. Signed Paul W. Whelan Title ATA Date 6/1/61

REFERENCE 1



MD BXM

Dr. Klatz

Temp. 7.8

Humidity 88

TZTW R 12.0

original 14 X 12 X 6" granite stone

found

BT

original 34" pine 575° 80 lbs 52.80

found down described 53°

original 20" pine N38°W 108 lbs 7.28

found stump N 44°W 696

Reference 2

Set 11.5 dm pipe found in

ground and in rock around

base across top stump TZTW R 12.0

15-22

Always shoulder corners

