

CORNER RECORD

27 N 12 E Mt.Diablo

COUNTY OF Plumas

MERIDIAN CALIFORNIA

CORNER TYPE: GOVT. CORNER MEANDER RANCHO CONTROL OTHER

CORNER IDENTIFICATION - DATE OF VISIT 09-18-1996



References: USFS FORM 5680-2 CARD NUMBER IS R-13 IN PLUMAS NATIONAL FOREST CORNER RECORD FILE Antelope Lake Quad

CORNER - LEFT AS FOUND FOUND AND TAGGED REESTABLISHED OBLITERATED CORNER RESULT

PHYSICAL DESCRIPTION OF CORNER FOUND, EVIDENCE AND METHOD USED TO IDENTIFY OR REESTABLISH

GLO notes: 1878

granite stone 16x10x6
 fir 18"N 45°W 11.2 feet
 fir 18"N 51°E 60 feet
 fir 6" S 54°E 17.2 feet
 fir 8" S 68°W 41 feet

FOUND: granite stone 16x10x6" 1.5' west of mound remains, scribed tree branch adjacent to mound, fir 40" with blaze N 43°W 11.7' from corner pine 22" with blaze N 52°E 60.4' from corner snag 8'high with blaze S 52°E 17.6' from corner fir 34" with blaze S 65°W 36' from corner

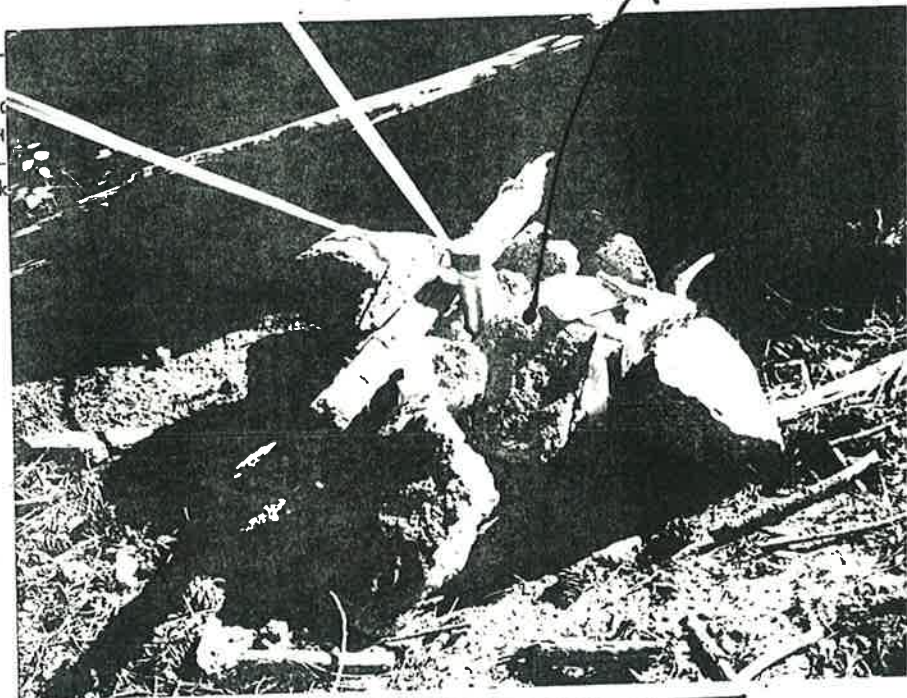
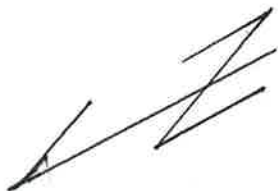
PHYSICAL DESCRIPTION OF MONUMENTS RESULT OR PERPETUATED

set 1 & 1/2 inch galvanized pipe 56" long with standard DWR brass cap 40" into the ground and built a rock mound around it.

CALIFORNIA COORDINATE SYSTEM ORDER: FIRST STATE
STATIONS USED: NGS (USC & GS)
ZONE _____ ELEVATION _____ NORTH

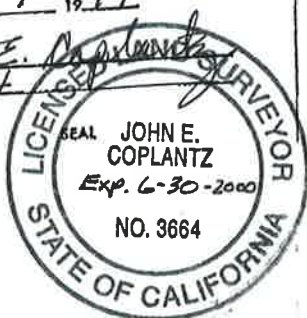
SKETCH: (include reference ties or witness points, remarks)

see attached sketch
Exhibit 'A'



SURVEYOR'S CERTIFICATE
THIS CORNER RECORD WAS PREPARED BY ME OR UNDER MY DIRECTION IN CONFORMANCE WITH THE LAND SURVEYORS ACT ON February 7 1997

SIGNED: John E. Coplantz
L.S. or R.C.E. No. 3664



COUNTY SURVEYOR'S CERTIFICATE
THE CORNER RECORD WAS RECEIVED 2/26 1997
AND EXAMINED AND FILED 5/6 1997

BY: Tom Spitzer
TITLE: County Surveyor

DOCUMENT No. 142
STATEMENT ON BACK OF SHEET YES NO



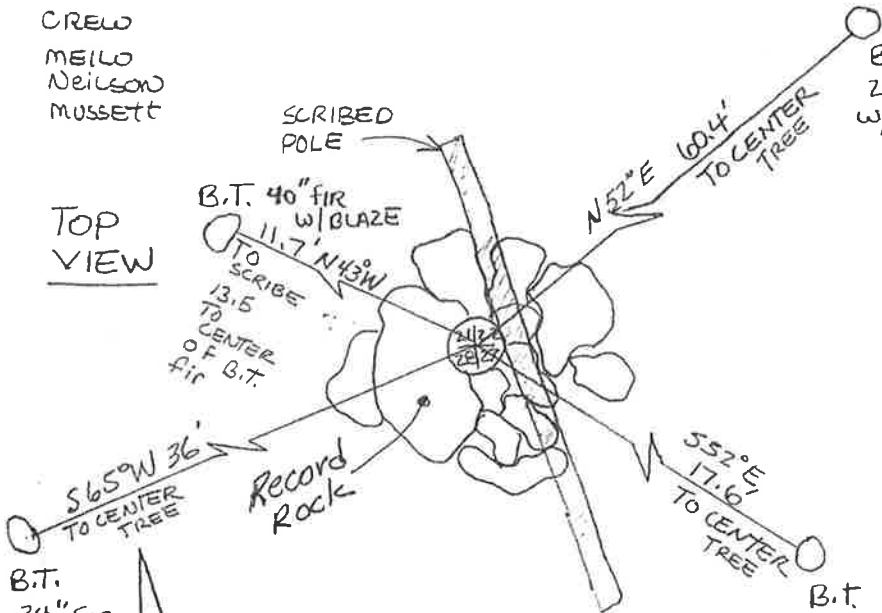
142

ANTELOPE Boundary monument PERPETUATION

CREW
MELLO
NEILSON
MUSSETT

STANDARD 2 1/2" D.W.R. Brass Cap
STAMPED AS SHOWN BELOW

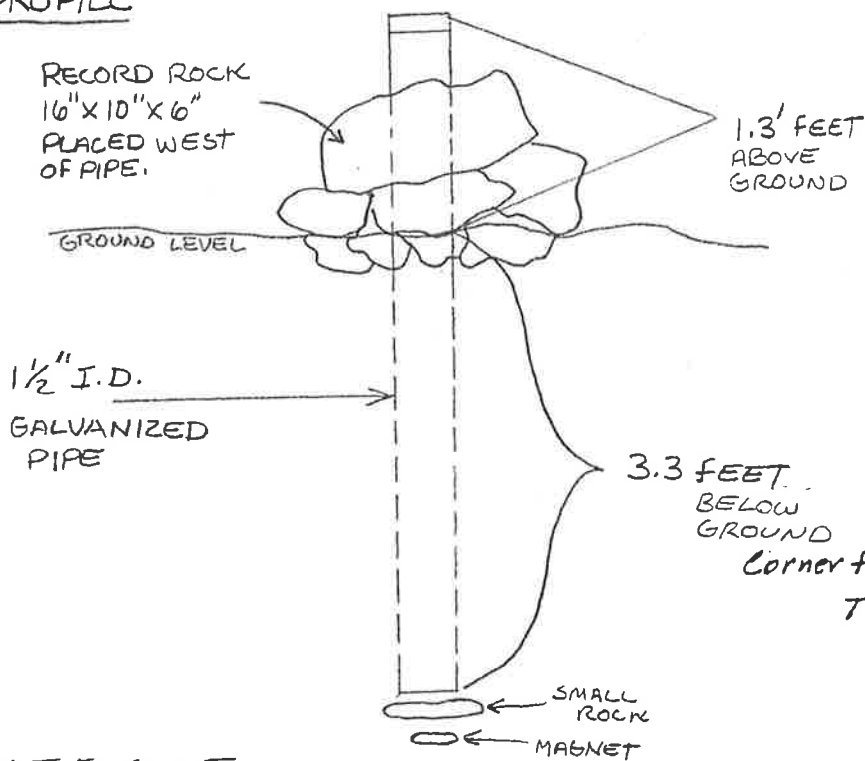
TOP VIEW



ROCK MOUND IS 3' x 3'
B.T. = BEARING TREE



PROFILE



STAMPING REFERENCE IS MANUAL OF INSTRUCTIONS 1973 SECTION 4.

CAP IS PINNED ONTO 1 1/2" I.D. GALVANIZED PIPE 4.6 FEET LONG
CONSTRUCTION OF MONUMENT REFERENCE - MANUAL OF INSTRUCTION 1973 SECTION 4-A

SET 1 1/2" I.D. GALVANIZED PIPE IN PLACE OF ORIGINAL ROCK MOUND. RECORD ROCK, AND OTHERS, WERE CAREFULLY REMOVED TO EXCAVATE HOLE. MAGNET WAS SET AT BOTTOM OF HOLE WITH A ROCK SET ON TOP. ROCKS WERE ALSO PUT JUST BELOW SURFACE AND ORIGINAL ROCK MOUND WAS PLACED AROUND PIPE, AS NEAR TO ORIGINAL PLACEMENT AS POSSIBLE

GLO NOTES WERE AVAILABLE

Exhibit 'A'

Corner for Sections 21, 22, 27 & 28
T27N R12E MDM
September 1996

NOT TO SCALE