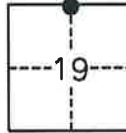


# CORNER RECORD

COUNTY OF PLUMAS T. 28 N. R. 7 E. M.D. \_\_\_\_\_ MERIDIAN CALIFORNIA

CORNER TYPE: GOV'T. CORNER  MEANDER  RANCHO  CONTROL  OTHER   
 CORNER IDENTIFICATION— DATE OF VISIT MAY 7, 1997



CORNER - LEFT AS FOUND  FOUND AND TAGGED  REESTABLISHED  OBLITERATED CORNER  RESULT

PHYSICAL DESCRIPTION OF CORNER FOUND; EVIDENCE AND METHOD USED TO IDENTIFY OR REESTABLISH

Found a Standard U.S.D.A. Monument  
 24" in ground 4" above in a  
 1 1/2' diameter stone mound,  
 (as per Book 10 R.O.S. page 110).

Found Cap Marked  
 as shown:

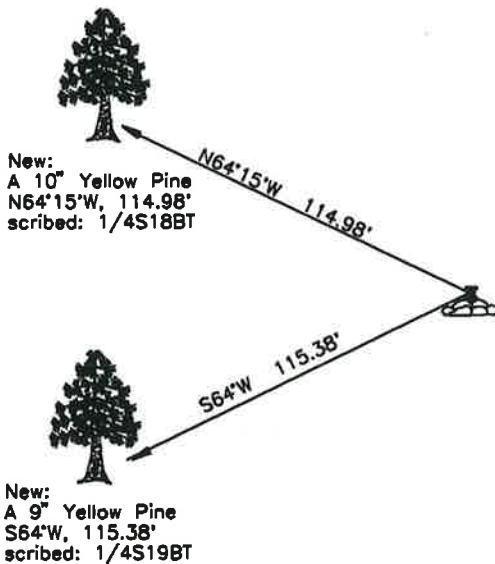


PHYSICAL DESCRIPTION OF MONUMENTS REBUILT OR PERPETUATED

New Bearing Trees:  
 A 10" Yellow Pine, N64°15'W, 114.98', scribed 1/4S18BT.  
 A 9" Yellow Pine, S64°W, 115.38', scribed 1/4S19BT.

CALIFORNIA COORDINATE SYSTEM ORDER: FIRST  SECOND  THIRD   
 STATIONS USED: NGS (USC & GS)  STATE  COUNTY  OTHER  STATION \_\_\_\_\_ STATION \_\_\_\_\_  
 ZONE \_\_\_\_\_ ELEVATION \_\_\_\_\_ NORTHINGS (Y) \_\_\_\_\_ EASTINGS (X) \_\_\_\_\_

SKETCH (Include reference tie or witness points, remarks and topo of area)



**Note:**

The existing Bearing Trees:  
 (A 19" Pine, N76°15'E, 17.62' and  
 A 16" Pine, S57°13'W, 17.36' as per  
 Book 10 R.O.S. pg. 110) are to be  
 cut down in the Chester Airport  
 expansion project. Two New Bearing  
 Trees were taken outside of the  
 clearing limits.



**SURVEYOR'S CERTIFICATE**

THIS CORNER RECORD WAS PREPARED BY ME OR UNDER MY  
 DIRECTION IN CONFORMANCE WITH THE LAND SURVEYORS ACT  
 ON May 13, 1997  
 SIGNED: John D. Rea  
 L.S. or R.C.E. No. LS No. 5176 Expires 6-30-99

SEAL



**COUNTY SURVEYOR'S CERTIFICATE**

THE CORNER RECORD WAS RECEIVED \_\_\_\_\_ 19\_\_\_\_  
 AND EXAMINED AND FILED \_\_\_\_\_ 19\_\_\_\_  
 BY: R. Tom Shuster  
 TITLE \_\_\_\_\_  
 DOCUMENT No. 143  
 STATEMENT ON BACK OF SHEET YES  NO



001-040-

# 143