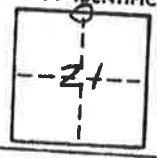


CORNER RECORD

COUNTY OF Plumas T. 26 N R. 9 E M.D.B.F. MERIDIAN CALIFORNIA
 CORNER TYPE: GOVT. CORNER MEANDER RANCHO CONTROL OTHER
 CORNER IDENTIFICATION - DATE OF VISIT 8/19 1997



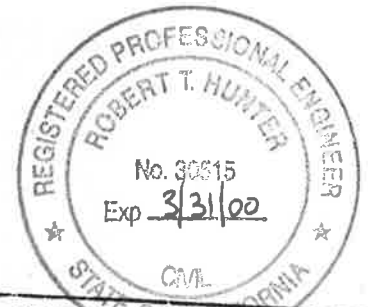
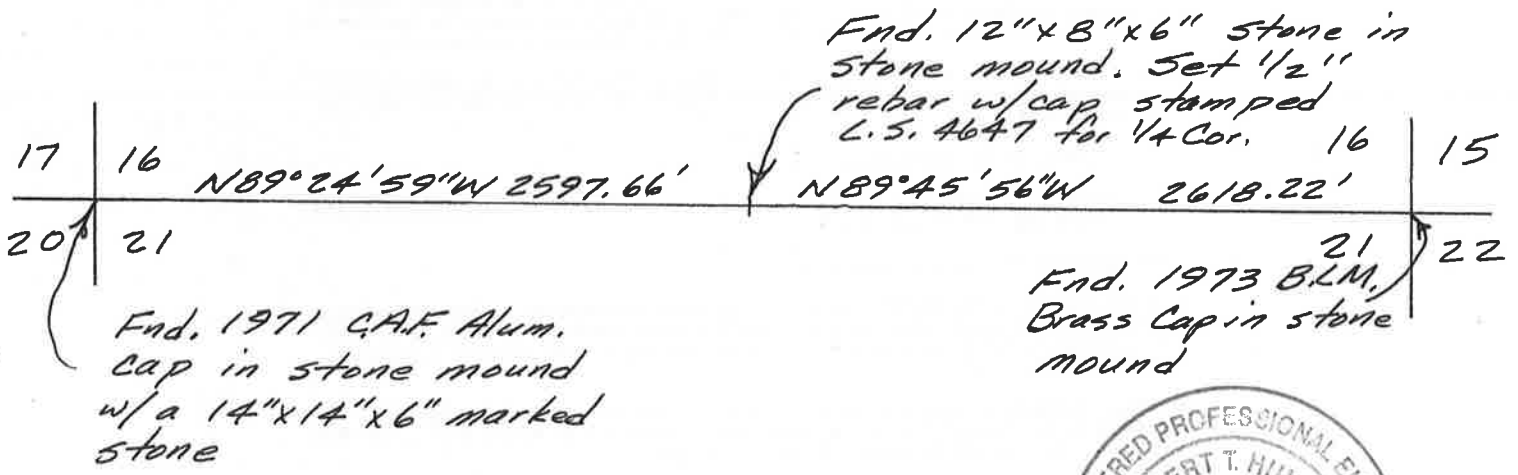
CORNER - LEFT AS FOUND FOUND AND TAGGED REESTABLISHED OBLITERATED CORNER REBUILT


PHYSICAL DESCRIPTION OF CORNER FOUND; EVIDENCE AND METHOD USED TO IDENTIFY OR REESTABLISH
Fnd. 12"x8"x6" Stone in a stone mound.

PHYSICAL DESCRIPTION OF MONUMENTS REBUILT OR PERPETUATED
Set 1/2" rebar w/cap stamped C.S. 4647 in stone mound.

CALIFORNIA COORDINATE SYSTEM ORDER: FIRST SECOND THIRD
 STATIONS USED: NGS (USC & GS) STATE COUNTY OTHER STATION _____
 ZONE _____ ELEVATION _____ NORTHINGS (Y) _____ EASTINGS (X) _____

SKETCH: (Include reference tie or witness points, remarks and topo of area)



SURVEYOR'S CERTIFICATE
 THIS CORNER RECORD WAS PREPARED BY ME OR UNDER MY DIRECTION IN CONFORMANCE WITH THE LAND SURVEYORS ACT ON 8/19
 SIGNED: [Signature]
 L.S. or R.C.E. No.: C.S. 4647


COUNTY SURVEYOR'S CERTIFICATE
 THE CORNER RECORD WAS RECEIVED 9/5 1997
 AND EXAMINED AND FILED 9/12 1997
 BY: Tom S. [Signature]
 TITLE: Co. Surveyor
 DOCUMENT No. 144
 STATEMENT ON BACK OF SHEET YES NO
002-160