

CORNER RECORD

COUNTY OF Plumas T. 26 N R. 14 E MD MERIDIAN CALIFORNIA
 CORNER TYPE: GOVT. CORNER MEANDER RANCHO CONTROL OTHER
 CORNER IDENTIFICATION — DATE OF VISIT Sept. 11, 1997



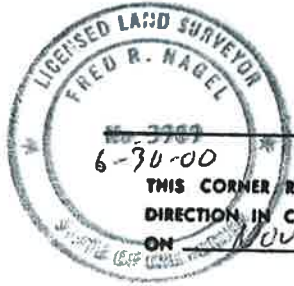
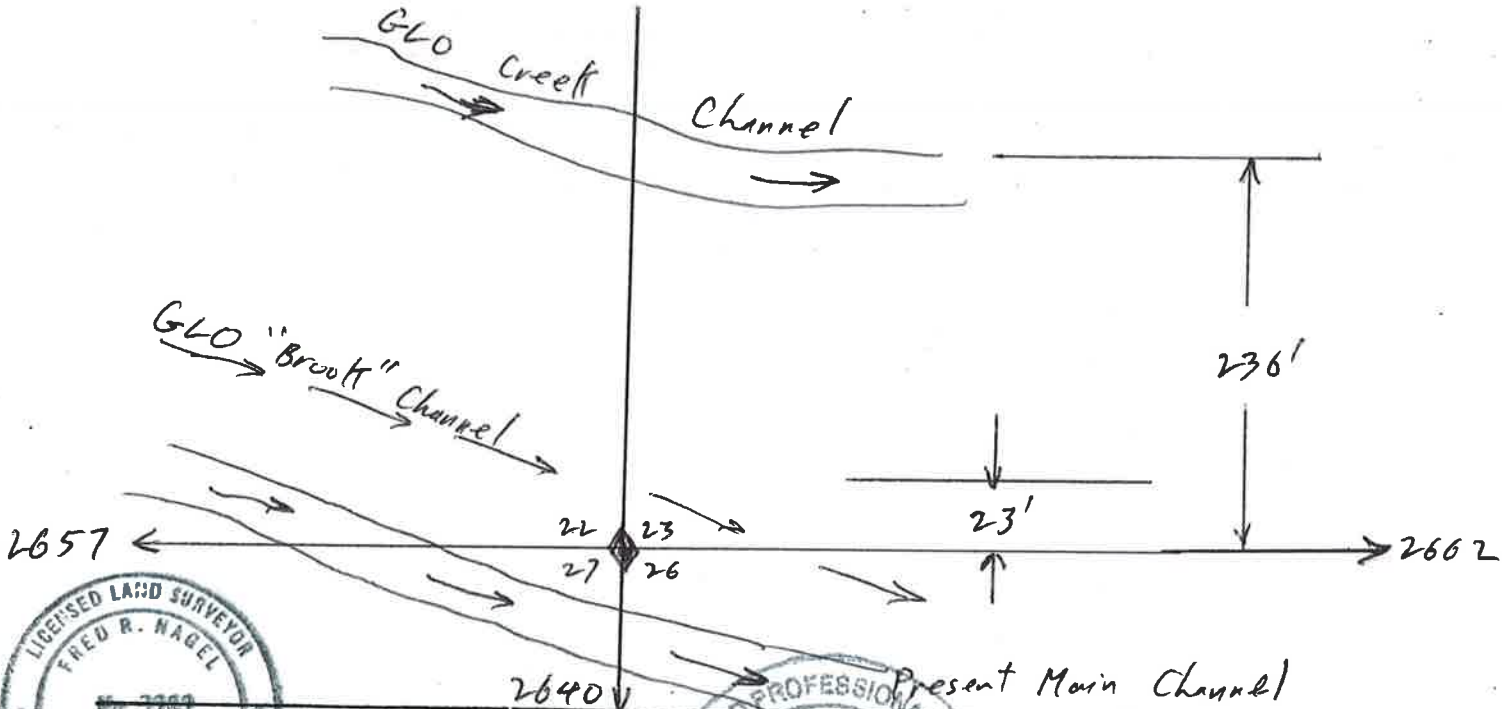
CORNER — LEFT AS FOUND FOUND AND TAGGED REESTABLISHED OBLITERATED CORNER REBUILT

PHYSICAL DESCRIPTION OF CORNER FOUND; EVIDENCE AND METHOD USED TO IDENTIFY OR REESTABLISH
Obliterated by creek channel changes. Reset based upon Found 'q' corners E & W & GLO calls to identified original creek channels. Also matches st. md. to South

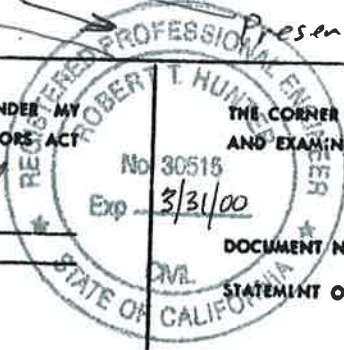
PHYSICAL DESCRIPTION OF MONUMENTS REBUILT OR PERPETUATED
Set 1/2" rebar capped "LS 3989" & constructed stone mound on north side of new creek channel

CALIFORNIA COORDINATE SYSTEM ORDER: FIRST SECOND THIRD
 STATIONS USED: NGS (USC & GS) STATE COUNTY OTHER STATION _____ STATION _____
 ZONE _____ ELEVATION _____ NORTHINGS (Y) _____ EASTINGS (X) _____

SKETCH: (Include reference tie or witness points, remarks and topo of area)



SURVEYOR'S CERTIFICATE
 THIS CORNER RECORD WAS PREPARED BY ME OR UNDER MY DIRECTION IN CONFORMANCE WITH THE LAND SURVEYORS' ACT ON Nov. 1 1997
 SIGNED: Fred R. Nagel
 L.S. or R.C.E. No.: LS 3989



COUNTY SURVEYOR'S CERTIFICATE
 THE CORNER RECORD WAS RECEIVED 11/25 1997 AND EXAMINED AND FILED 12/6 1997
 BY: R. Tom Strute
 TITLE: Co Surveyor
 DOCUMENT No. 146 150

SEAL

STATEMENT ON BACK OF SHEET
 YES NO