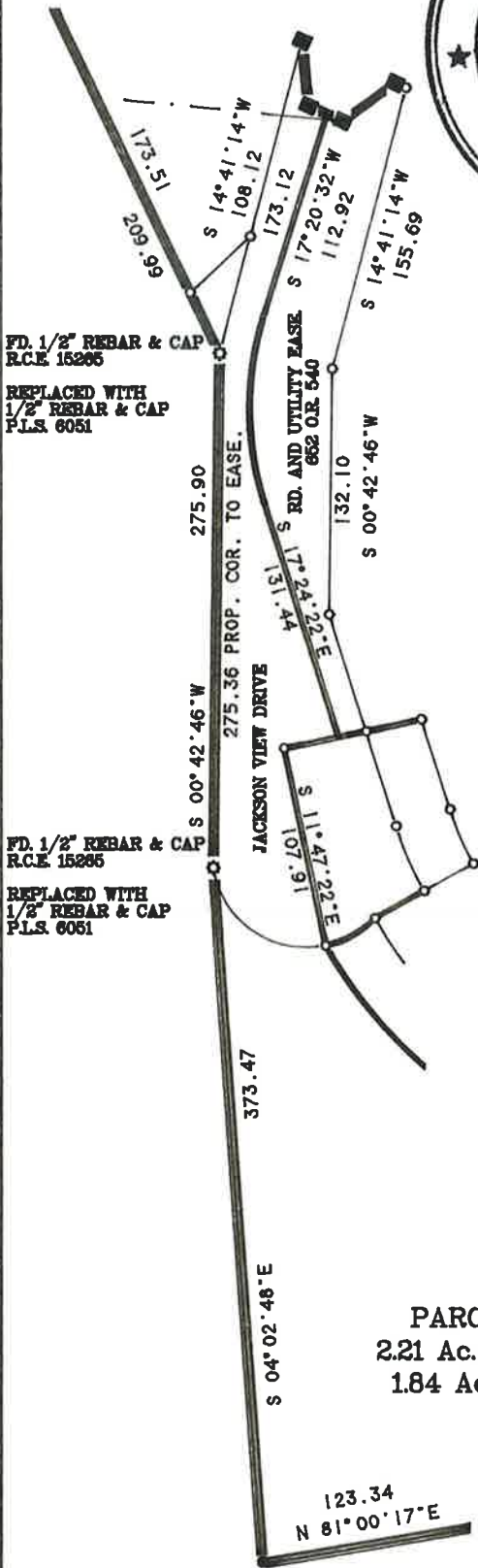


D:\96-01BAR\96-01-8

SCALE 1 INCH = 100 FEET



NOTE:

THIS CORNER RECORD SHOWS A CHANGE IN THE TYPE OF MONUMENT AFTER CONSTRUCTION THE LOCATION OF SAID MONUMENTS ARE AS SHOWN IN BOOK 11 OF PARCEL MAPS AT PAGE 36.

SURVEYOR'S STATEMENT

THIS CORNER RECORD WAS PREPARED BY ME OR UNDER MY DIRECTION IN CONFORMANCE WITH THE LAND SURVEYORS ACT ON JULY 30, 1998.

Gerald J. Tibbeteaux
 GERALD JOSEPH TIBBEDEAUX
 P.L.S. 6051
 LICENSE EXPIRES 6/30/01



LEGEND

- FOUND 3/4" IRON PIPE & TAG R.C.E. 7294
- ⊙ FOUND REBAR & CAP R.C.E. 15265
- FOUND 1/2" REBAR & CAP P.L.S. 6051
- ◆ FOUND 6"X6" CONCRETE C.D.H. MONUMENT

COUNTY SURVEYOR'S STATEMENT

THE CORNER RECORD WAS RECEIVED 8/3 1998

AND EXAMINED AND FILED 8/4 1998

No. 30515

Exp 3/31/00



Tom Hunter
 R. TOM HUNTER R.C.E. 30515
 COUNTY SURVEYOR
 LICENSE EXPIRES 3/31/00

PARCEL 1
 2.21 Ac. GROSS
 1.84 Ac. NET

CORNER RECORD FOR RANDAL E. BARLOW
 PARCEL 1 BOOK 11 OF PARCEL MAPS, PAGE 36

WITHIN SECTION 10, T. 23N., R. 11E, M.D.M.
 PLUMAS COUNTY - CALIFORNIA

Tibbeteaux Surveying
 P.O. Box 1960 / 565 Ridge St.
 Portola CA 96122
 (530) 832-5772