

CORNER RECORD

COUNTY OF Plumas T. 27 N R. 12 E Mt. Diablo MERIDIAN CALIFORNIA

CORNER TYPE: GOVT. CORNER MEANDER RANCHO CONTROL OTHER

CORNER IDENTIFICATION - DATE OF VISIT 10/15 19 98 *revisit*
10/15/97



CORNER - LEFT AS FOUND FOUND AND TAGGED REESTABLISHED OBLITERATED CORNER REBUILT

PHYSICAL DESCRIPTION OF CORNER FOUND; EVIDENCE AND METHOD USED TO IDENTIFY OR REESTABLISH

GLO Notes 1878

Granite stone 20" x 14" x 12"
Pine 22" dia. Bears N 61 °W, 60 links(39.6 ft.)
Pine 26" dia. Bears S 30° E, 58 links(38.3 ft.)

Found

Granite stone 20" x 14"x 12"
Pine 24" dia. Bears N 60°W , 40.6 ft.
Pine 28" dia. Bears S 29°E , 42. ft.(slope distance) with overgrown scribe
1 & 1/2 " iron pipe with DWR brass cap with paddle board

PHYSICAL DESCRIPTION OF MONUMENTS REBUILT OR PERPETUATED

CALIFORNIA COORDINATE SYSTEM ORDER: FIRST SECOND THIRD
STATIONS USED: NGS (USC & GS) STATE COUNTY OTHER STATION _____ STATION _____
ZONE _____ ELEVATION _____ NORTHINGS (Y) _____ EASTINGS (X) _____

SKETCH: (Include reference tie or witness points, remarks and topo of area)

Attached: Exhibit 'A' Sketch, Exhibit 'B' Photos

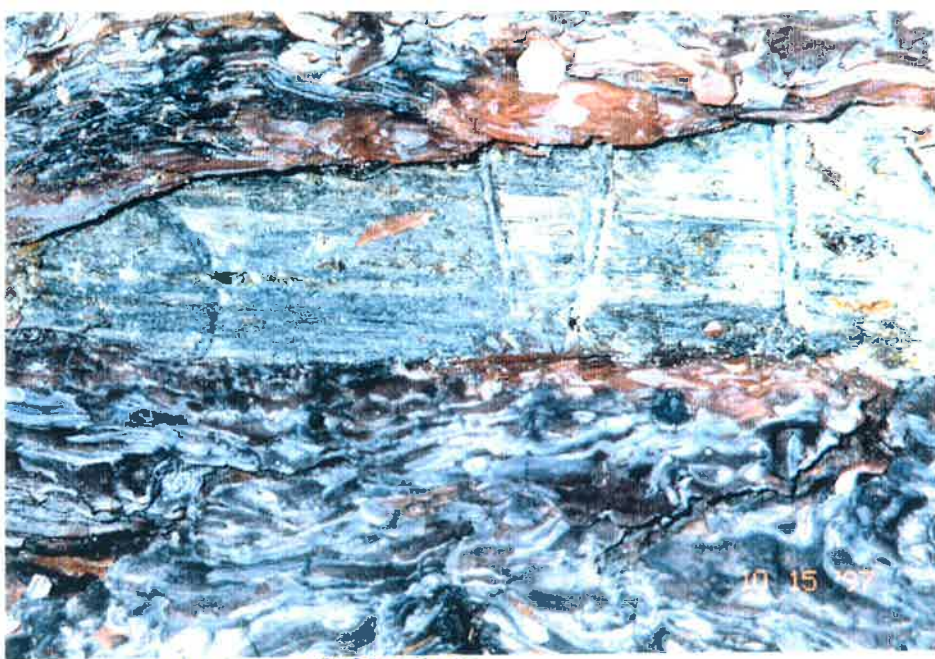
- References: (1) * GLO notes
- (2) Antelope Lake Quadrangle Map 604-1C

* indicates that a copy is included

SURVEYOR'S CERTIFICATE
THIS CORNER RECORD WAS PREPARED BY ME OR UNDER MY DIRECTION IN CONFORMANCE WITH THE LAND SURVEYORS ACT ON October 22 19 98
SIGNED: John E. Coplantz
L.S. or R.C.E. No. 3664

COUNTY SURVEYOR'S CERTIFICATE
THE CORNER RECORD WAS RECEIVED 10/20 19 98
AND EXAMINED AND FILED 11/2 19 98
BY: Tom Stant
TITLE: Co Surveyor
DOCUMENT No. 157
STATEMENT ON BACK OF SHEET
No. 3 YES NO
Exp. 3/31/00

#157



#1 ↘ PINNACLES SIDE



#2

↑ RECORD ROCK
20" x 14" x 12"

EXHIBIT 'B'
EAST 1/4 of SECTION 25
T27N R12E MDM.

#4



↑ AREA VIEW ↓

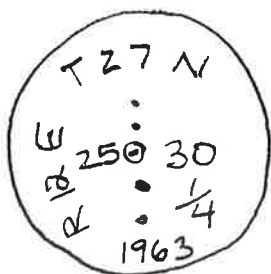
#3 ↕



10-15-98

ANTELOPE DAM

CAP STAMPING



FND 1 1/2" IP WITH
DWR BRASS CAP,
PADDLE BOARD

FOUND ON SLOPE ABOUT
HALF WAY DOWN SLOPE

24" DIA PINE

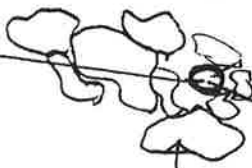
PIPE IS 16" UP FROM
OG. PADDLE BOARD
IS 24" EAST OF PIPE
UPHILL.

Photo #2

GLO NOTES

SET GRANITE STONE
20"x14"x12" IN STONE
FOR 1/4 SEC COR.
PINE 22" DIA. BEARS
N 61° W 60 LKS
PINE 26" DIA BEARS
S 30° E 56 LKS

42.6' SLOPE
CENTER OF TREE
32% SLOPE
17 1/2° SLOPE
← N 60° W°
40.6' Horiz



RECORD
ROCK
20"x14"x12"

← PADDLE BOARD

40% SLOPE
42' SLOPE DIST.
S 29° E →

EXHIBIT B
4 + 1
28" PINE
SCAR WITH
SCRIBE
VISIBLE BUT
MOSTLY OVER
GROWN

EXHIBIT 'A'

EAST 1/4 CORNER OF SECTION 25
CORNER IS COMMON TO SECTION 25 RANGE 12 E
AND SECTION 30 RANGE 13 E

T 27 N 111 W 11

Land mountainous. Soil 1st rate and 2nd rate.
Heavy timber Pine, Fir and Tamarac.
Undergrowth Manzanita.

S. 1° 26' West on a true line between Secs. 25 & 30
Var. 17° 30' East.

- 15.00 Enter flat bears E. & W.
- 18.55 Road bears N. W. & S. E.
- 22.00 Leave flat bears E. & W.
- 32.00 Summit. Descend.
- 40.00 Set granite stone 20 x 14 x 12 in stone mound for
Sec. Cor. from which a
Pine 22 in. in dia. bears N. 61° W. 60 lks dist.
" 26 " " " " S. 30° E. 58 " "
- 55.20 Brook 8 lks wide runs N. W.
- 80.00 Set a granite stone 18 x 18 x 10 in stone mound for Cor.
to Secs. 25, 30, 31 & 36, from which a
Pine 20 in. in dia. bears S. 46° E. 71 lks dist. 6.3
" 24 " " " " N. 42° E. 105 " " 18.1
" 30 " " " " S. 35° W. 60 " " 37.7
" 16 " " " " N. 26° W. 91 " " 60.5

Reference # 1

Land mountainous. Soil 1st and 2nd rate.
Heavy timber Pine, Fir, Spruce and Cedar.
Undergrowth Manzanita.

S. 1° 26' West on a true line between Secs. 31 & 36
Var. 17° East.

- 40.00 Set a granite stone 24 x 20 x 4 in a stone mound for
Sec. Cor. from which
A Pine 16 in. in dia. bears N. 86° E. 81 lks dist.