

CORNER RECORD

COUNTY OF Plumas T. 27 N R. 12 E Mt. Diablo MERIDIAN CALIFORNIA

CORNER TYPE: GOVT. CORNER MEANDER RANCHO CONTROL OTHER

CORNER IDENTIFICATION - DATE OF VISIT 10/8 19 98 revisited
10-15-97



CORNER - LEFT AS FOUND FOUND AND TAGGED REESTABLISHED OBLITERATED CORNER RESULT

PHYSICAL DESCRIPTION OF CORNER FOUND, EVIDENCE AND METHOD USED TO IDENTIFY OR REESTABLISH

GLO Notes 1878

Granite stone 18" x 14" x 3"
Pine 12" dia. Bears S 6° E, 57 links(37.6 ft.)
Pine 16" dia. Bears N 29° W, 90 links(59.4 ft.)

Found

Granite stone 21" x 14" x 3"
Pine 24" dia. Bears S 6° W, 37 ft.
Pine 28" dia. Bears N 30° W, 59.4 ft. with overgrown scribe
1 & 1/2" iron pipe with DWR brass cap with paddle board
Fir 10" dia. Bears N 82° W, 6 ft. with "K" tag.

PHYSICAL DESCRIPTION OF MONUMENTS REBUILT OR PERPETUATED

CALIFORNIA COORDINATE SYSTEM ORDER: FIRST SECOND THIRD
STATIONS USED: NGS (USC & GS) STATE COUNTY OTHER STATION _____ STATION _____
ZONE _____ ELEVATION _____ NORTHINGS (Y) _____ EASTINGS (X) _____

SKETCH: (Include reference tie or witness points, remarks and topo of area)

Attached: Exhibit 'A' Sketch, Exhibit 'B' Photos

- References: (1) * GLO notes
- (2) Antelope Lake Quadrangle Map 604-1C

* indicates that a copy is included
We set a k-tag on a tree visible from the road.

SURVEYOR'S CERTIFICATE
THIS CORNER RECORD WAS PREPARED BY ME OR UNDER MY DIRECTION IN CONFORMANCE WITH THE LAND SURVEYORS ACT ON October 26, 1998

SIGNED: John E. Coplantz
L.S. or R.C.E. No. 42366

COUNTY SURVEYOR'S CERTIFICATE
THE CORNER RECORD WAS RECEIVED 10/20 19 98
AND EXAMINED AND FILED 11/2 19 98

BY: Tom Smith
TITLE: Co Surveyor
DOCUMENT No. 159
STATEMENT ON BACK OF SHEET

#159



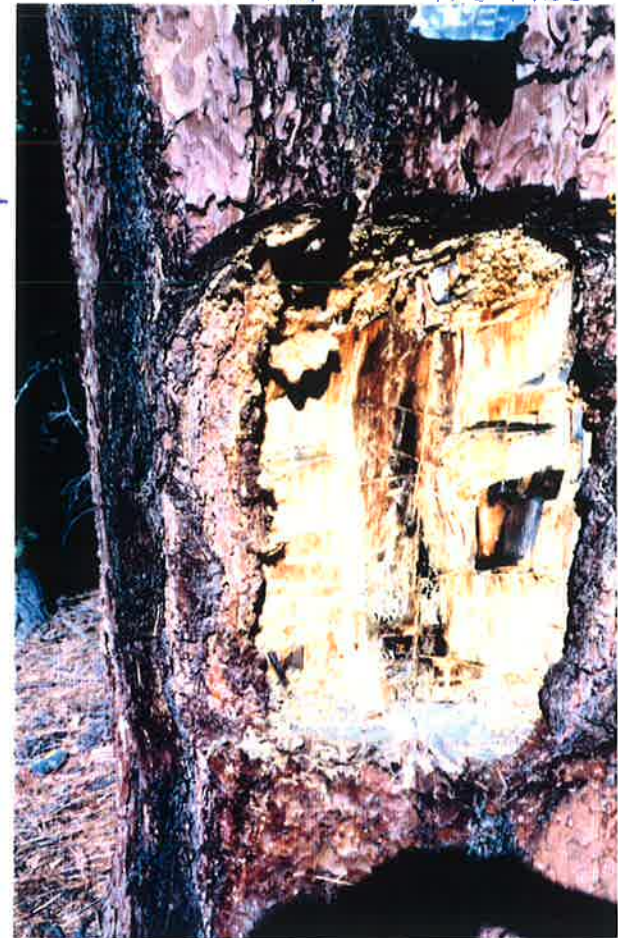
#3 AREA VIEW

Exhibit 'B'
 South 1/4 of SECTION 25
 T27N R12E MPM.



#2

#1 28" PINE WITH SCRIBE



TREE

CORNER IS APPROXIMATELY

DIRECTION DISTANCE

T. R. SEC.

CORNER TRACT

POSTED BY DATE

54.3

10 15 '97

10-08-98
 10-15-97 Mello
 Neilson
 MUSSETT

1.95 MILES ALONG 27N62 FROM
 27N42 FORK. TO FORK TO LEFT
 THEN .13 MILES TO POINT IN ROAD OPPOSITE
 MARK ON RIGHT.

S 1/4 Sec 25
 T27N
 R12E

Legend

() indicates record GLO data from pg. 4

cap stamped.

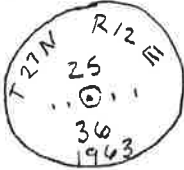
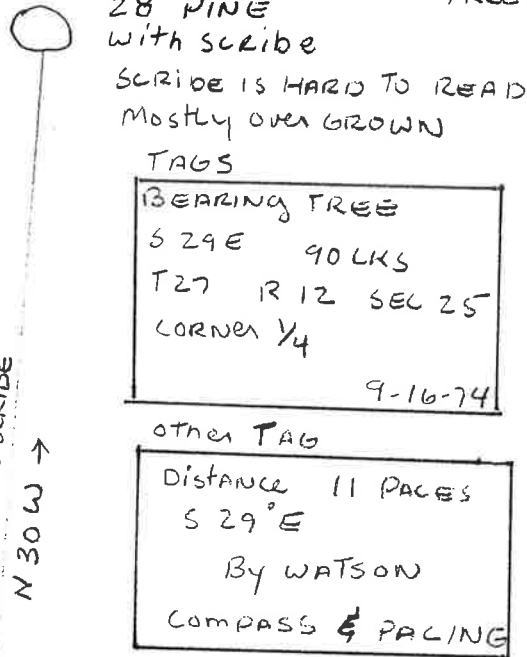


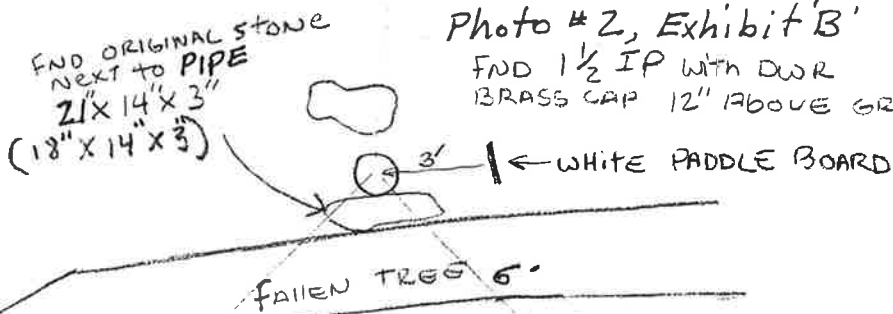
Photo #1, Exhibit 'B' CAN SEE PADDLE THROUGH TREES.



No scale

Photo #2, Exhibit 'B'

FND 1 1/2 IP WITH DWR
 BRASS CAP 12" ABOVE GROUND.



Tag
 N 6° E
 7 Paces
 Sec 36
 T27N
 R12E

37.62', 12" Pine
 K S 6° W
 37' TO CL of TREE

9-16-74
 Watson

FND 24" DIA PINE STUMP WITH TAG NAILED TO TOP.
 24" ABOVE GROUND

EXHIBIT 'A'

Corner common to Sections
 25
 36 T27N, R12E
 Mount Diablo Meridian
 (M.D.M.)

80.14 Intersect the east boundary at a point 1 link north of the corner to sections 30,31,25 and 36, which corner is a granite stone 16x12x10 in a stone mound, from which a,
pine 20 inch diam. bears N.39°E. 62 links dist.
pine 28 inch diam. bears S.42½°W. 70 links dist.
pine 24 inch diam. bears N.64°W. 105 links dist.
pine 36 inch diam. bears S.48½°E. 89 links dist.
From which corner I run,
N.89°53'W. on a true line.

Var. 17° east.

40.07 Set a granite stone 18x14x3 in a stone mound for quarter section corner, from which a,
pine 12 inch diam. bears S.6°E. 57 links dist. 37.62'
pine 16 inch diam. bears N.29°W. 90 links dist. 59.40'

80.14 To corner to sections 25,26,35 and 36.

Land mountainous.

Soil second rate.

Heavy timber pine, cedar and fir.

Undergrowth same with manzanita.

5 1/4 Sec 25

N.1°26'E. between sections 25 and 26.

Var. 16° 30' east.

40.00 Set a fir post 3x3x50 inch in a stone mound for quarter section corner from which a,
pine 8 inch diam. bears N.60°W. 37 links dist.

Reference # 1