

CORNER RECORD

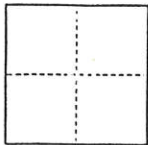
BLOCK A AGASSIZ ADDITION TO TOWN OF QUINCY

MAP BOOK A PAGE 43

COUNTY OF Plumas SECTION 14, T. 24 N., R. 9 E., MOUNT DIABLO BASE 1 MERIDIAN CALIFORNIA

CORNER TYPE: GOV'T. CORNER MEANDER RANCHO CONTROL OTHER SUBDIVISION LOT

CORNER IDENTIFICATION — DATE OF VISIT FEBRUARY 19 99



CORNER — LEFT AS FOUND FOUND AND TAGGED REESTABLISHED OBLITERATED CORNER REBUILT

PHYSICAL DESCRIPTION OF CORNER FOUND; EVIDENCE AND METHOD USED TO IDENTIFY OR REESTABLISH

0: FND. CORNER AS SHOWN ON 9 RS 52, BRASS CAPPED CONCRETE BLOCK LS 1880

Ø: " " " " " " , PLASTIC CAPPED RE-BAR, RCE 22836

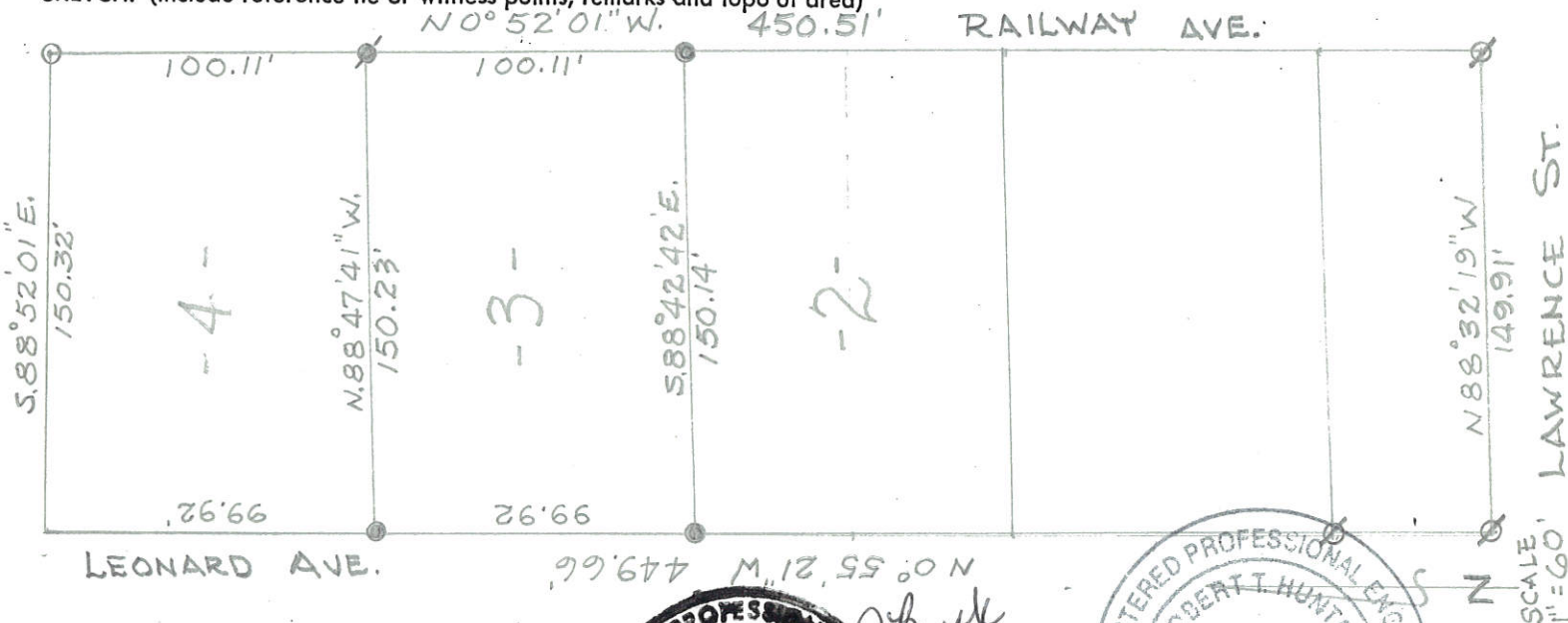
PHYSICAL DESCRIPTION OF MONUMENTS REBUILT OR PERPETUATED

● ALUMINUM CAPPED 1/2" REBAR, RCE 13528 STAMPED

● ALUMINUM CAPPED 1/2" REBAR 1 FOOT WEST OF PROPERTY CORNER, STAMPED RCE 13528

CALIFORNIA COORDINATE SYSTEM ORDER: FIRST SECOND THIRD
 STATIONS USED: NGS (USC & GS) STATE COUNTY OTHER STATION _____ STATION _____
 ZONE _____ ELEVATION _____ NORTHINGS (Y) _____ EASTINGS (X) _____

SKETCH: (Include reference tie or witness points, remarks and topo of area)



SURVEYOR'S CERTIFICATE

THIS CORNER RECORD WAS PREPARED BY ME OR UNDER MY SUPERVISION AND IN CONFORMANCE WITH THE LAND SURVEYORS ACT ON FEBRUARY 2 19 99

SIGNED: Lawrence J. Brock

R.C.E. No.: 13528

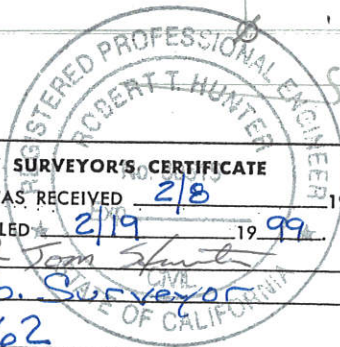


COUNTY SURVEYOR'S CERTIFICATE

THIS CORNER RECORD WAS RECEIVED 2/8 19 99 AND EXAMINED AND FILED 2/19 19 99

BY: R. Tom Spitzer
 TITLE: Co. Surveyor

DOCUMENT No. 162



CORNER RECORD

BLOCK A AGRASSY ADDITION TO TOWN OF QUINCY

MAP BOOK A 4548

COUNTY OF PLUMAS COUNTY

CALIFORNIA

CORNER TYPE: MEMBER TANGENT OTHER

CORNER IDENTIFICATION - DATE OF VISIT 1/23/88



CORNER - IS AT CORNER X

FROM A DESCRIPTION OF CORNER - FOUND EVIDENCE OF A CORNER WHICH IS IDENTICAL TO THAT OF THE

ADJACENT CORNER - THE CORNER IS IDENTICAL TO THAT OF THE ADJACENT CORNER

ADJACENT CORNER - THE CORNER IS IDENTICAL TO THAT OF THE ADJACENT CORNER

ADJACENT CORNER - THE CORNER IS IDENTICAL TO THAT OF THE ADJACENT CORNER

ADJACENT CORNER - THE CORNER IS IDENTICAL TO THAT OF THE ADJACENT CORNER

ADJACENT CORNER - THE CORNER IS IDENTICAL TO THAT OF THE ADJACENT CORNER

ADJACENT CORNER - THE CORNER IS IDENTICAL TO THAT OF THE ADJACENT CORNER

ADJACENT CORNER - THE CORNER IS IDENTICAL TO THAT OF THE ADJACENT CORNER

ADJACENT CORNER - THE CORNER IS IDENTICAL TO THAT OF THE ADJACENT CORNER

ADJACENT CORNER - THE CORNER IS IDENTICAL TO THAT OF THE ADJACENT CORNER

ADJACENT CORNER - THE CORNER IS IDENTICAL TO THAT OF THE ADJACENT CORNER

ADJACENT CORNER - THE CORNER IS IDENTICAL TO THAT OF THE ADJACENT CORNER

ADJACENT CORNER - THE CORNER IS IDENTICAL TO THAT OF THE ADJACENT CORNER

ADJACENT CORNER - THE CORNER IS IDENTICAL TO THAT OF THE ADJACENT CORNER

ADJACENT CORNER - THE CORNER IS IDENTICAL TO THAT OF THE ADJACENT CORNER

ADJACENT CORNER - THE CORNER IS IDENTICAL TO THAT OF THE ADJACENT CORNER

ADJACENT CORNER - THE CORNER IS IDENTICAL TO THAT OF THE ADJACENT CORNER

ADJACENT CORNER - THE CORNER IS IDENTICAL TO THAT OF THE ADJACENT CORNER

ADJACENT CORNER - THE CORNER IS IDENTICAL TO THAT OF THE ADJACENT CORNER

ADJACENT CORNER - THE CORNER IS IDENTICAL TO THAT OF THE ADJACENT CORNER

ADJACENT CORNER - THE CORNER IS IDENTICAL TO THAT OF THE ADJACENT CORNER

ADJACENT CORNER - THE CORNER IS IDENTICAL TO THAT OF THE ADJACENT CORNER

ADJACENT CORNER - THE CORNER IS IDENTICAL TO THAT OF THE ADJACENT CORNER

ADJACENT CORNER - THE CORNER IS IDENTICAL TO THAT OF THE ADJACENT CORNER

ADJACENT CORNER - THE CORNER IS IDENTICAL TO THAT OF THE ADJACENT CORNER

ADJACENT CORNER - THE CORNER IS IDENTICAL TO THAT OF THE ADJACENT CORNER

ADJACENT CORNER - THE CORNER IS IDENTICAL TO THAT OF THE ADJACENT CORNER

ADJACENT CORNER - THE CORNER IS IDENTICAL TO THAT OF THE ADJACENT CORNER

ADJACENT CORNER - THE CORNER IS IDENTICAL TO THAT OF THE ADJACENT CORNER

ADJACENT CORNER - THE CORNER IS IDENTICAL TO THAT OF THE ADJACENT CORNER

ADJACENT CORNER - THE CORNER IS IDENTICAL TO THAT OF THE ADJACENT CORNER

ADJACENT CORNER - THE CORNER IS IDENTICAL TO THAT OF THE ADJACENT CORNER

ADJACENT CORNER - THE CORNER IS IDENTICAL TO THAT OF THE ADJACENT CORNER

ADJACENT CORNER - THE CORNER IS IDENTICAL TO THAT OF THE ADJACENT CORNER

ADJACENT CORNER - THE CORNER IS IDENTICAL TO THAT OF THE ADJACENT CORNER

ADJACENT CORNER - THE CORNER IS IDENTICAL TO THAT OF THE ADJACENT CORNER

ADJACENT CORNER - THE CORNER IS IDENTICAL TO THAT OF THE ADJACENT CORNER

ADJACENT CORNER - THE CORNER IS IDENTICAL TO THAT OF THE ADJACENT CORNER



Handwritten signature or initials.

Handwritten signature: James J. ...

Vertical text on the left margin: 2000 1/2 INCHES

Vertical text on the right margin: 2000 1/2 INCHES