

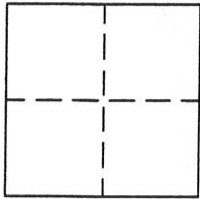
CORNER RECORD

Document Number \_\_\_\_\_

Section 35, T.23N.R.13E.

County of Plumas, California

Brief Legal Description Lot 3, Block 5, PORTOLA HEIGHTS Book 5 RS 86



CORNER TYPE

Government Corner  Control   
Meander  Property   
Rancho  Other   
Date of Survey 6-9-1999

COORDINATES

(Optional)  
N. \_\_\_\_\_  
E. \_\_\_\_\_  
Zone \_\_\_\_\_ Datum \_\_\_\_\_  
Elev. \_\_\_\_\_

Corner— Left as found  Found and tagged  Established  Reestablished  Rebuilt

Identification and type of corner found: Evidence used to identify or procedure used to establish or reestablish the corner:  
Found Monuments in Record position per 5 RS 86 as shown on attached sketch.

A description of the physical condition of the monument as found and as set or reset:  
Monuments found were reset monuments per 5 RS 86 and appeared to be in original condition.

SURVEYOR'S STATEMENT

This Corner Record was prepared by me or under my direction in conformance with the Land Surveyors' Act on (Month day), 1999.

Signed John W. Hamby L.S. 2843  
John W. Hamby



COUNTY SURVEYOR'S STATEMENT

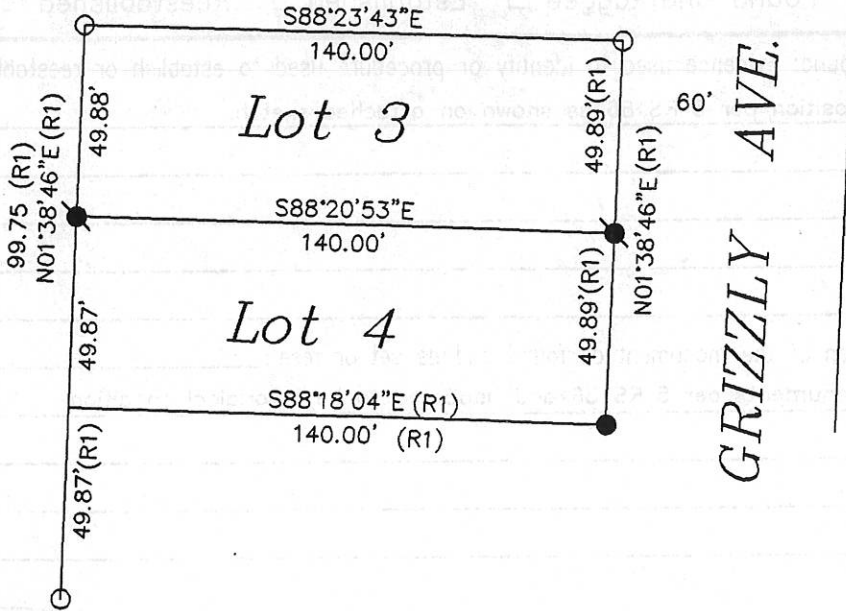
This Corner Record was received 7/12 1999 and examined and filed 7/13 1999.

Signed R. Tom Hunter Title County Surveyor



County Surveyor's Comment \_\_\_\_\_

A portion of Block 5, PORTOLA HEIGHTS.



**LOT 3  
PORTOLA HEIGHTS**

Potion of Section 35  
T.23N.R.13E. M.D.M.  
Plmas County Calif.  
Scale 1" = 50' June 1999

**LEGEND**

- FOUND Rebar with Aluminum Cap LS 2843
  - FOUND Rebar with Plastic Cap LS 2843
  - SET 5/8" Rebar & Plastic Cap LS 2843
- (R1) RECORD per 5 rs 86.

Hamby Surveying Inc.  
P.O. Box 1209  
Portola, CA 96122  
(530) 832-5571

99061