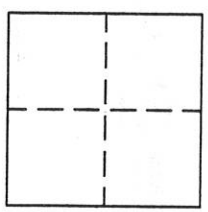


# CORNER RECORD

Document Number 1166  
County of PLUMAS, California

Brief Legal Description PARCEL 1 OF 2 PM 105



### CORNER TYPE

Government Corner  Control   
Meander  Property   
Rancho  Other   
Date of Survey MAY. 28, 1999

### COORDINATES (Optional)

N. \_\_\_\_\_  
E. \_\_\_\_\_  
Zone \_\_\_\_\_ Datum \_\_\_\_\_  
Elev. \_\_\_\_\_

Corner- Left as found  Found and tagged  Established  Reestablished  Rebuilt

Identification and type of corner found: Evidence used to identify or procedure used to establish or reestablish the corner:  
FOUND MONUMENTS IN RECORD POSITION AS SHOWN ON ATTACHED SKETCH

A description of the physical condition of the monument as found and as set or reset: \_\_\_\_\_  
CORNER LOCATION FELL IN ROAD. SET SPIKE TO SHOW CORNER LOCATION, AND SET REFERENCE POINT ON INTERSECTION OF LOT LINE WITH EDGE OF ROAD EASEMENT. R.P. IS A 5/8" REBAR WITH ALUMINUM CAP STAMPED L.S. 2843.

### SURVEYOR'S STATEMENT

This Corner Record was prepared by me or under my direction in conformance with the Land Surveyors' Act on (MAY 28), 1999.

Signed John W. Hamby L.S. 2843  
John W. Hamby



### COUNTY SURVEYOR'S STATEMENT

This Corner Record was received 7/12 1999 and examined and filed 7/13 1999.

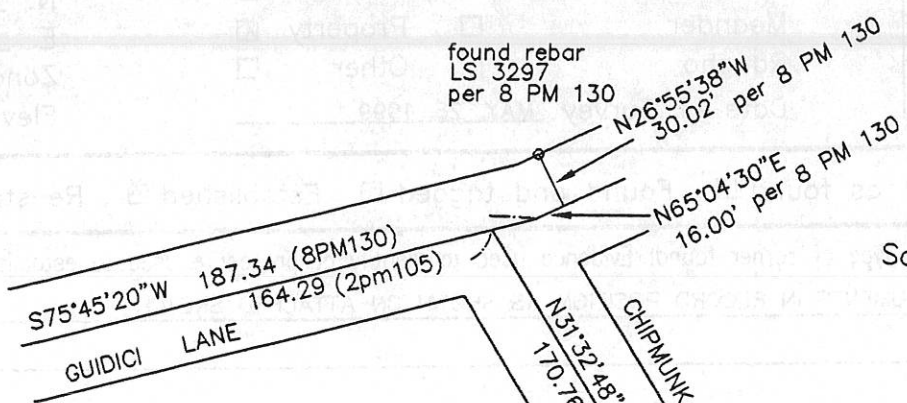
Signed R. Tom Hunter Title C. Surveyor



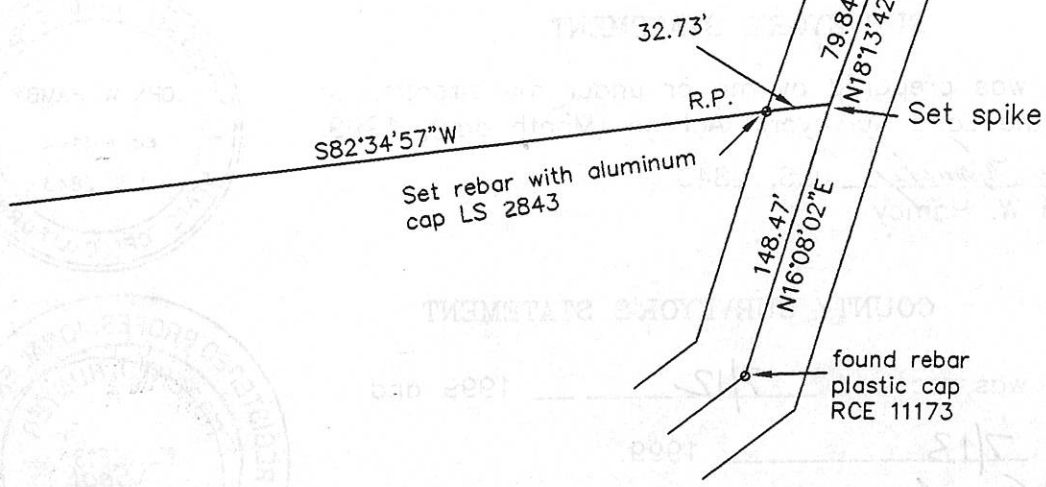
County Surveyor's Comment \_\_\_\_\_  
\_\_\_\_\_  
\_\_\_\_\_



Scale 1"=100'



PARCEL 1 OF 2 P.M. 105



PARCEL 1  
 2 P.M. 105  
 SW 1/4 SEC. 12,  
 T22N R12E, M.D.M.  
 PLUMAS COUNTY  
 CALIF. MAY, 1999

Hamby Surveying Inc.  
 P.O. Box 1209  
 Portola, CA 96122  
 (530) 832-5571