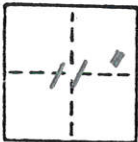


# CORNER RECORD

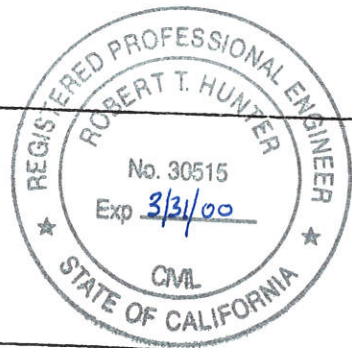
COUNTY OF Plumas T. 27N R. 7E MDBE MERIDIAN CALIFORNIA  
 CORNER TYPE: GOVT. CORNER  MEANDER  RANCHO  CONTROL  OTHER   
 CORNER IDENTIFICATION — DATE OF VISIT Sept. 16 1999



CORNER — LEFT AS FOUND  FOUND AND TAGGED  REESTABLISHED OBLITERATED CORNER  REBUILT

PHYSICAL DESCRIPTION OF CORNER FOUND; EVIDENCE AND METHOD USED TO IDENTIFY OR REESTABLISH

PHYSICAL DESCRIPTION OF MONUMENTS REBUILT OR PERPETUATED

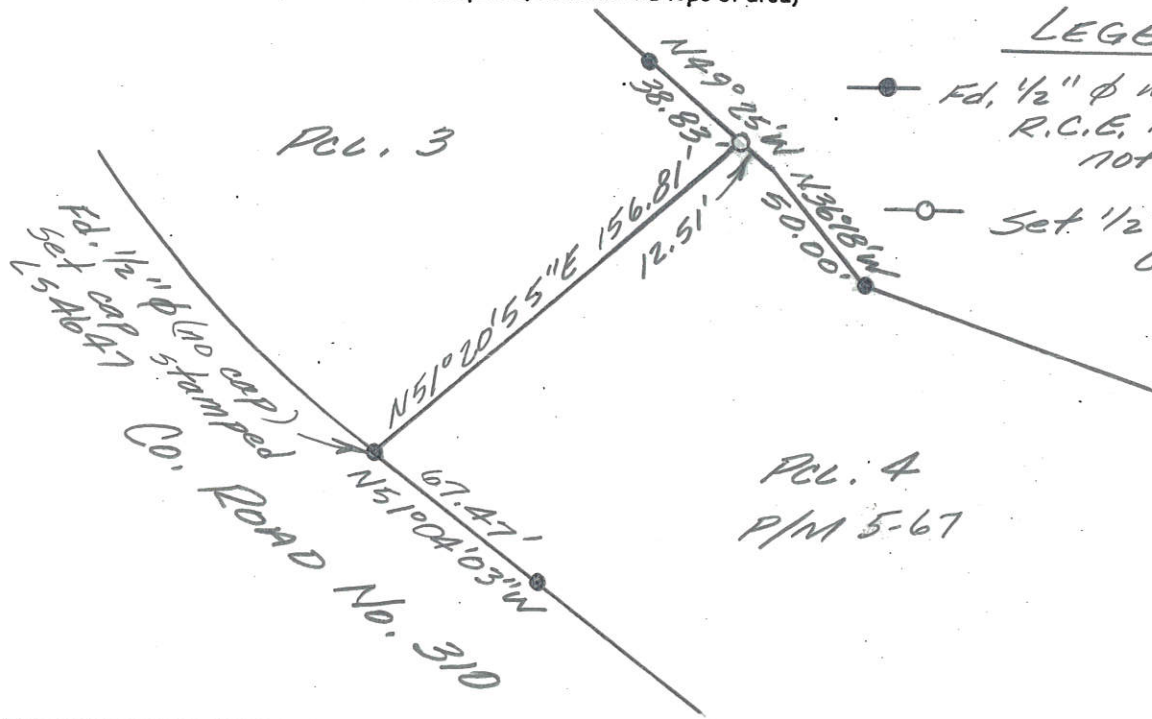


CALIFORNIA COORDINATE SYSTEM ORDER: FIRST  SECOND  THIRD   
 STATIONS USED: NGS (USC & GS)  STATE  COUNTY  OTHER  STATION \_\_\_\_\_  
 ZONE \_\_\_\_\_ ELEVATION \_\_\_\_\_ NORTHINGS (Y) \_\_\_\_\_ EASTINGS (X) \_\_\_\_\_

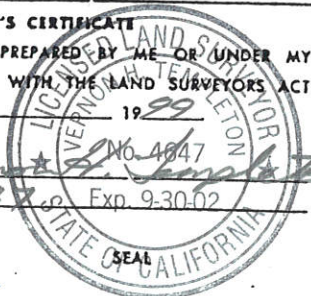
SKETCH: (Include reference tie or witness points, remarks and topo of area)

### LEGEND

- Fd. 1/2"  $\phi$  w/cap stamped R.C.E. 11173 (except as noted).
- Set. 1/2"  $\phi$  w/cap stamped L.S. 4647



**SURVEYOR'S CERTIFICATE**  
 THIS CORNER RECORD WAS PREPARED BY ME OR UNDER MY DIRECTION IN CONFORMANCE WITH THE LAND SURVEYORS ACT ON Sept. 16 1999  
 SIGNED: Robert T. Hunter No. 4647  
 L.S. or R.C.E. No.: 4647 Exp. 9-30-02



**COUNTY SURVEYOR'S CERTIFICATE**  
 THE CORNER RECORD WAS RECEIVED 9/27 1999  
 AND EXAMINED AND FILED 10/7 1999  
 BY: R. Tom Hunter  
 TITLE: C. Surveyor  
 DOCUMENT No. 171

STATEMENT ON BACK OF SHEET YES  NO

001-051-012

**A CORNER RECORD IS TO BE USED TO PERPETUATE MONUMENTS ONLY**

The following are the Board's instructions:

1. This Corner Record is to be prepared by a licensed land surveyor or registered civil engineer and filed with the County Surveyor (or County Engineer) in the county in which the corner is located.
2. A Corner Record shall be filed within 90 days when a corner or corner accessory originally established by official public land surveys of the United States Government has been found remonumented (reestablished—as an obliterated corner), witnessed or used in a survey.
3. The County Surveyor shall examine the Corner Record within 20 days. He shall examine it for conformance with Section 8766, subsection b and c. He shall then file and index this Corner Record after:
  1. He finds that the information is complete.
  2. He finds a disagreement with other record and he has noted the disagreement on the reverse side of the Corner Record.He shall notify the surveyor of his action.
4. At the option of the licensed land surveyor or registered civil engineer, a Corner Record may be filed for any property corner, property controlling corner, reference monument, or accessory to a property corner, when none of the conditions requiring a record of survey is required as outlined in Section 8762.
5. Corner identification should be by the Bureau of Land Management marking system, as outlined in the "Manual of Surveying Instructions" (Sections 4-23 through 4-45 in the 1973 manual (Sections 259 through 290 in the 1947 manual
6. Perpetuation of monument to be filed on a Corner Record form shall be those monuments set to replace existing or obliterated corners as identified in Sections 348 through 358 of the "Manual of Surveying Instruction, 1947" or Sections 5-4 through 5-19 of the "Manual of Surveying Instruction, 1973". The location and restoration of lost corners shall be shown on a record of survey in accordance with Section 8764.
7. California Coordinate System data may be included only when readily available.
8. A sketch showing reference ties to identifiable objects in the vicinity of the corner shall be provided when appropriate. Photographs or topo of the monument and general area, etc., are also encouraged.
9. Only one corner shall be included on each Corner Record. Accessories to a corner, may be included on the Corner Record for the subject corner.
10. A Corner Record is not required but may be filed to show its physical condition when: a) a Corner Record is on file and the corner is found as described in the existing Corner Record filed; b) all conditions of the statutes are complied with by proper notation on a record of survey map, subdivision map or parcel map filed after January 1, 1974.