

CORNER RECORD

COUNTY OF Plumas T. 27 N R. 12 E Mt. Diablo MERIDIAN CALIFORNIA

CORNER TYPE: GOVT. CORNER MEANDER RANCHO CONTROL OTHER
CORNER IDENTIFICATION - DATE OF VISIT 22 JUNE 1999



CORNER - LEFT AS FOUND FOUND AND TAGGED REESTABLISHED OBLITERATED CORNER RESULT

PHYSICAL DESCRIPTION OF CORNER FOUND; EVIDENCE AND METHOD USED TO IDENTIFY OR REESTABLISH

GLO Notes 1878

Marked 22" dia. Black pine for corner

Found

1 & 1/2" iron pipe with DWR brass cap covered with mound of granite stones near paddle board with decayed stump next to pipe.

Pine 28" dia. Bears N 50° E, 34 links (22.4 ft.)

Decayed stump bears N 53° E, 22 ft. with scribe on slat next to stump.

Pine 12" dia. Bears S 35° E 1 link (7.92 inches)

Decayed log 57" long S 35° E, 44 inches away with scribe detached and lying under log.

Pine 26" dia. Bears S 35° W, 21 links(13.9 ft.)

Fir 24" dia. Bears N 46° W, 26 links(17 ft.)

PHYSICAL DESCRIPTION OF MONUMENTS REBUILT OR PERPETUATED

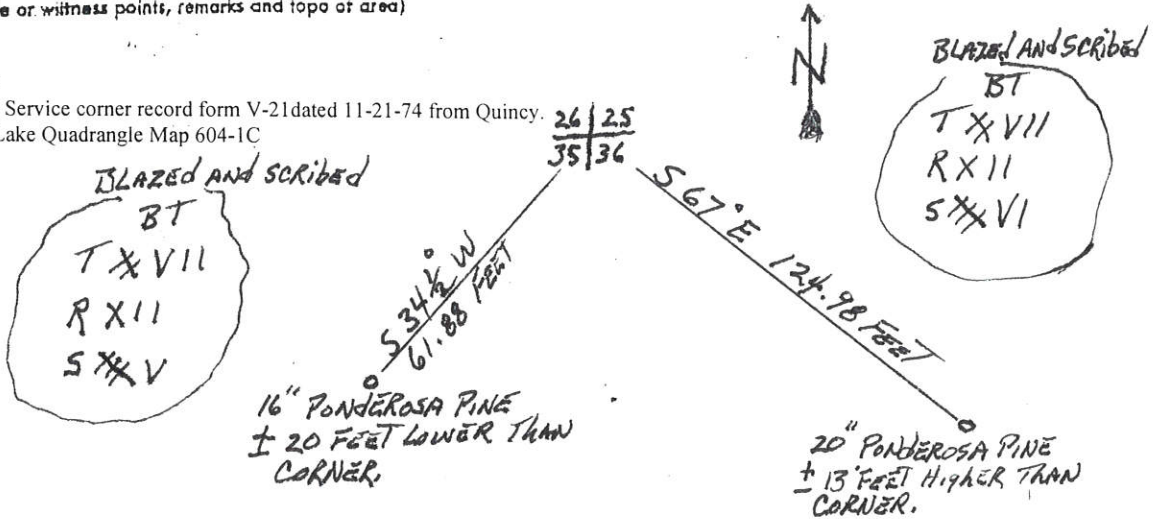
Established 2 new bearing trees as described in the sketch below.

NOTE: This is an addendum to the corner record ^{dated} filed October 22, 1998 by me.

CALIFORNIA COORDINATE SYSTEM ORDER: FIRST SECOND THIRD
STATIONS USED: NGS (USC & GS) STATE COUNTY OTHER STATION _____ STATION _____
ZONE _____ ELEVATION _____ NORTHINGS (Y) _____ EASTINGS (X) _____

SKETCH: (Include reference tie or witness points, remarks and topo of area)

- References: (1) GLO notes
- (2) U.S. Forest Service corner record form V-21 dated 11-21-74 from Quincy.
- (3) Antelope Lake Quadrangle Map 604-1C



LICENSED LAND SURVEYOR'S CERTIFICATE
 THIS CORNER RECORD WAS PREPARED BY ME OR UNDER MY DIRECTION IN COMPLIANCE WITH THE LAND SURVEYORS ACT ON 22 JUNE 1999
 SIGNED: John S. Caplan
 No. 3604
 Exp. 6-30-2000
 STATE OF CALIFORNIA

COUNTY SURVEYOR'S CERTIFICATE
 THE CORNER RECORD WAS RECEIVED 2/1/00 AND EXAMINED AND FILED 2/16/00
 BY: R. Tom Hunter
 TITLE: Co. Surveyor
 DOCUMENT No. 173
 STATEMENT ON BACK OF SHEET

REGISTERED PROFESSIONAL ENGINEER
 ROBERT T. HUNTER
 No. 30515
 Exp. 3/31/00
 STATE OF CALIFORNIA

PROPERTY RECORDS

1911-1912
1912-1913
1913-1914
1914-1915
1915-1916
1916-1917
1917-1918
1918-1919
1919-1920
1920-1921
1921-1922
1922-1923
1923-1924
1924-1925
1925-1926
1926-1927
1927-1928
1928-1929
1929-1930
1930-1931
1931-1932
1932-1933
1933-1934
1934-1935
1935-1936
1936-1937
1937-1938
1938-1939
1939-1940
1940-1941
1941-1942
1942-1943
1943-1944
1944-1945
1945-1946
1946-1947
1947-1948
1948-1949
1949-1950
1950-1951
1951-1952
1952-1953
1953-1954
1954-1955
1955-1956
1956-1957
1957-1958
1958-1959
1959-1960
1960-1961
1961-1962
1962-1963
1963-1964
1964-1965
1965-1966
1966-1967
1967-1968
1968-1969
1969-1970
1970-1971
1971-1972
1972-1973
1973-1974
1974-1975
1975-1976
1976-1977
1977-1978
1978-1979
1979-1980
1980-1981
1981-1982
1982-1983
1983-1984
1984-1985
1985-1986
1986-1987
1987-1988
1988-1989
1989-1990
1990-1991
1991-1992
1992-1993
1993-1994
1994-1995
1995-1996
1996-1997
1997-1998
1998-1999
1999-2000
2000-2001
2001-2002
2002-2003
2003-2004
2004-2005
2005-2006
2006-2007
2007-2008
2008-2009
2009-2010
2010-2011
2011-2012
2012-2013
2013-2014
2014-2015
2015-2016
2016-2017
2017-2018
2018-2019
2019-2020
2020-2021
2021-2022
2022-2023
2023-2024
2024-2025

25 28
22 38

2024



Handwritten signature

