

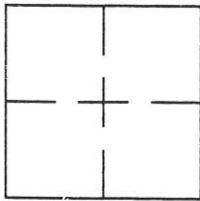
# CORNER RECORD

Document Number \_\_\_\_\_

Sec. 35 T. 23 N. R. 13 E.

County of PLUMAS, California

Brief Legal Description Lots 9 thru 14 - Block 3 - West Portola per 4 RS 143.



### CORNER TYPE

Government Corner  Control   
 Meander  Property   
 Rancho  Other   
 Date of Survey Mar. 22, 2000

### COORDINATES (Optional)

N. \_\_\_\_\_  
 E. \_\_\_\_\_  
 Zone \_\_\_\_\_ Datum \_\_\_\_\_  
 Elev. \_\_\_\_\_

Corner— Left as found  Found and tagged  Established  Reestablished  Rebuilt

Identification and type of corner found: Evidence used to identify or procedure used to establish or reestablish the corner:  
Found 1/2" I.P. tagged L.S. 3297 and checked corners of Lots 9 thru 14, Block 3, West Portola as shown on 4 RS 143 and on attached sketch.

A description of the physical condition of the monument as found and as set or reset:  
Found 1/2" Iron Pipe tagged L.S. 3297 per 4 RS 143, bent. Relaced with 5/8" Rebar with aluminum cap stamped L.S. 2843 as shown on attached sketch.

### SURVEYOR'S STATEMENT

This Corner Record was prepared by me or under my direction in conformance with the Land Surveyors' Act on March, 22, 2000.

Signed John W. Hamby L.S. 2843  
 John W. Hamby



### COUNTY SURVEYOR'S STATEMENT

This Corner Record was received MARCH 24 2000 and examined and filed April 20 2000.

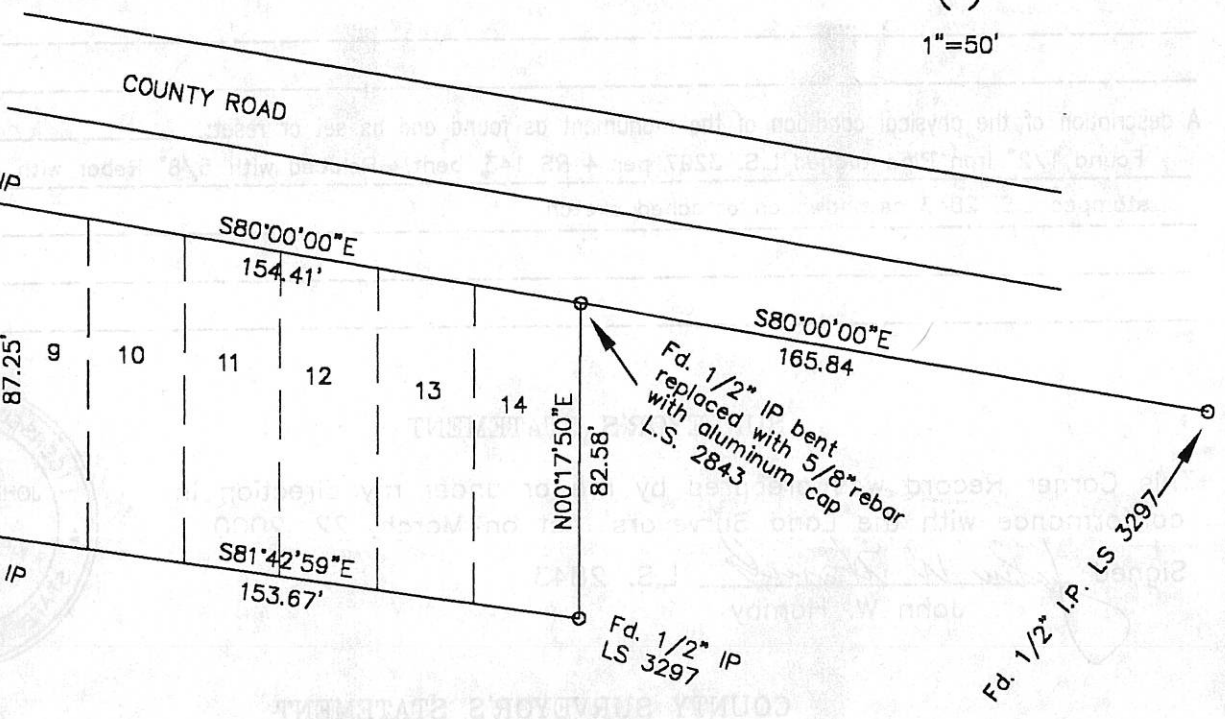
Signed R. Tom Hunter Title Co Surveyor



County Surveyor's Comment \_\_\_\_\_



1"=50'



Lots 9 - 14  
 Block 3  
 West Portola  
 per 4 RS 143

Hamby Surveying Inc.  
 P.O. Box 1209  
 Portola, CA 96122  
 (530) 832-5571