

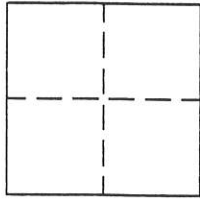
CORNER RECORD

Document Number 178

Section 17, T. 22 N., R. 12 E., M.D.M.

County of Plumas, California

Brief Legal Description SW 1/4 of the NW 1/4 of the NE 1/4 of Section 17



CORNER TYPE

Government Corner Control
Meander Property
Rancho Other
Date of Survey June 27, 2000

COORDINATES
(Optional)

N. _____
E. _____
Zone _____ Datum _____
Elev. _____

Corner— Left as found Found and tagged Established Reestablished Rebuilt

Identification and type of corner found: Evidence used to identify or procedure used to establish or reestablish the corner: Found 3" USFS Aluminum Cap at N 1/4 corner of Section 17 and 5/8" rebar with aluminum cap stamped LS 2843 at the Northeast corner of the NW 1/4 of the NW 1/4 of the NE 1/4 of Section 17 and at the Southwest corner of the N 1/2 of the NE 1/4 of the NW 1/4 of the NE 1/4 of Section 17 in record position as shown in Book 10 of Record of Surveys at page 114, Plumas County records, as shown in attached sketch.

A description of the physical condition of the monument as found and as set or reset: Set 5/8" rebar with Aluminum Cap stamped LS 2843 in record position at the Northeast, Southeast and Southwest corners of the SW 1/4 of the NW 1/4 of the NE 1/4 of Section 17, Set witness corners at the Northwest corner, corner fell under 36" long as shown in attached sketch. Corners set in record position per 10 RS 114.

SURVEYOR'S STATEMENT

This Corner Record was prepared by me or under my direction in conformance with the Land Surveyors' Act on June 27, 2000.

Signed John W. Hamby L.S. 2843
John W. Hamby



COUNTY SURVEYOR'S STATEMENT

This Corner Record was received 7/10 2000 and examined and filed 7/18 2000.

Signed R. Tom Hunter Title Co Surveyor



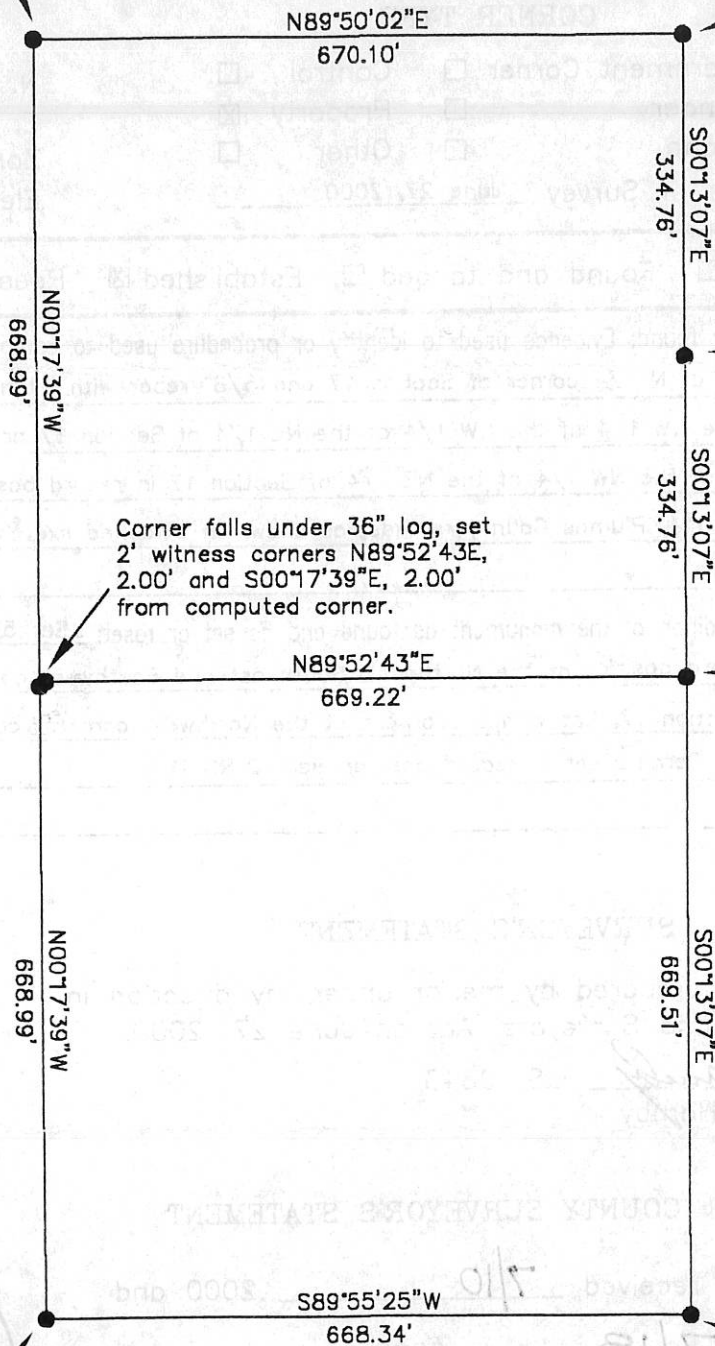
County Surveyor's Comment _____

178
North 1/4 Corner of Section 17
Found 3" USFS Aluminum Cap
per 10 RS 114

Found 5/8" rebar with
Aluminum Cap stamped
LS 2843 per 10 RS 114



1" = 200'



Corner falls under 36" log, set
2' witness corners N89°52'43E,
2.00' and S00°17'39"E, 2.00'
from computed corner.

Found 5/8" rebar with
Aluminum Cap stamped
LS 2843 per 10 RS 114

Set 5/8" rebar with
Aluminum Cap
stamped LS 2843

Set 5/8" rebar with
Aluminum Cap
stamped LS 2843

Set 5/8" rebar with
Aluminum Cap
stamped LS 2843

NOTE: Bearings and Distances are record per 10 RS 114