

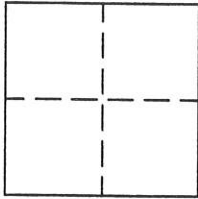
CORNER RECORD

Document Number 180

Section 33, T. 24 N., R. 11 E., M.D.M.

County of Plumas, California

Brief Legal Description Lot 176, Greenhorn Subdivision, 3 M 70



CORNER TYPE

Government Corner Control
Meander Property
Rancho Other
Date of Survey July 24, 2000

COORDINATES (Optional)

N. _____
E. _____
Zone _____ Datum _____
Elev. _____

Corner- Left as found Found and tagged Established Reestablished Rebuilt

Identification and type of corner found: Evidence used to identify or procedure used to establish or reestablish the corner:
Found 1/2" I.P. tagged RCE 13054 on Right of Way line of Greenhorn Road and Northeasterly line of Lot 176, also found 1/2" I.P., tag missing, at most Easterly corner of Lot 174. Found 1/2" I.P. in area of most Easterly corner of Lot 175. Appeared to have been dug out with cleaning of channel.

A description of the physical condition of the monument as found and as set or reset: The Northeasterly corner of Lot 176, which is on the Right of Way of Crooked Creek Lane was missing. It falls in drainage channel. I set 5/8" rebar with Aluminum Cap stamped LS 2843 from found corners as shown in attached sketch.

SURVEYOR'S STATEMENT

This Corner Record was prepared by me or under my direction in conformance with the Land Surveyors' Act on August 2, 2000.

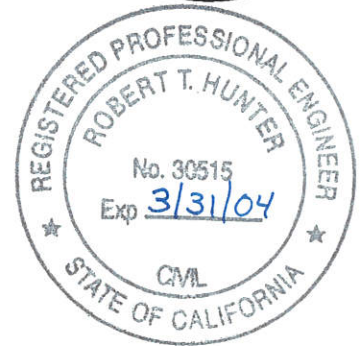
Signed John W. Hamby L.S. 2843
John W. Hamby



COUNTY SURVEYOR'S STATEMENT

This Corner Record was received 9/27 2000 and examined and filed 10/2 2000.

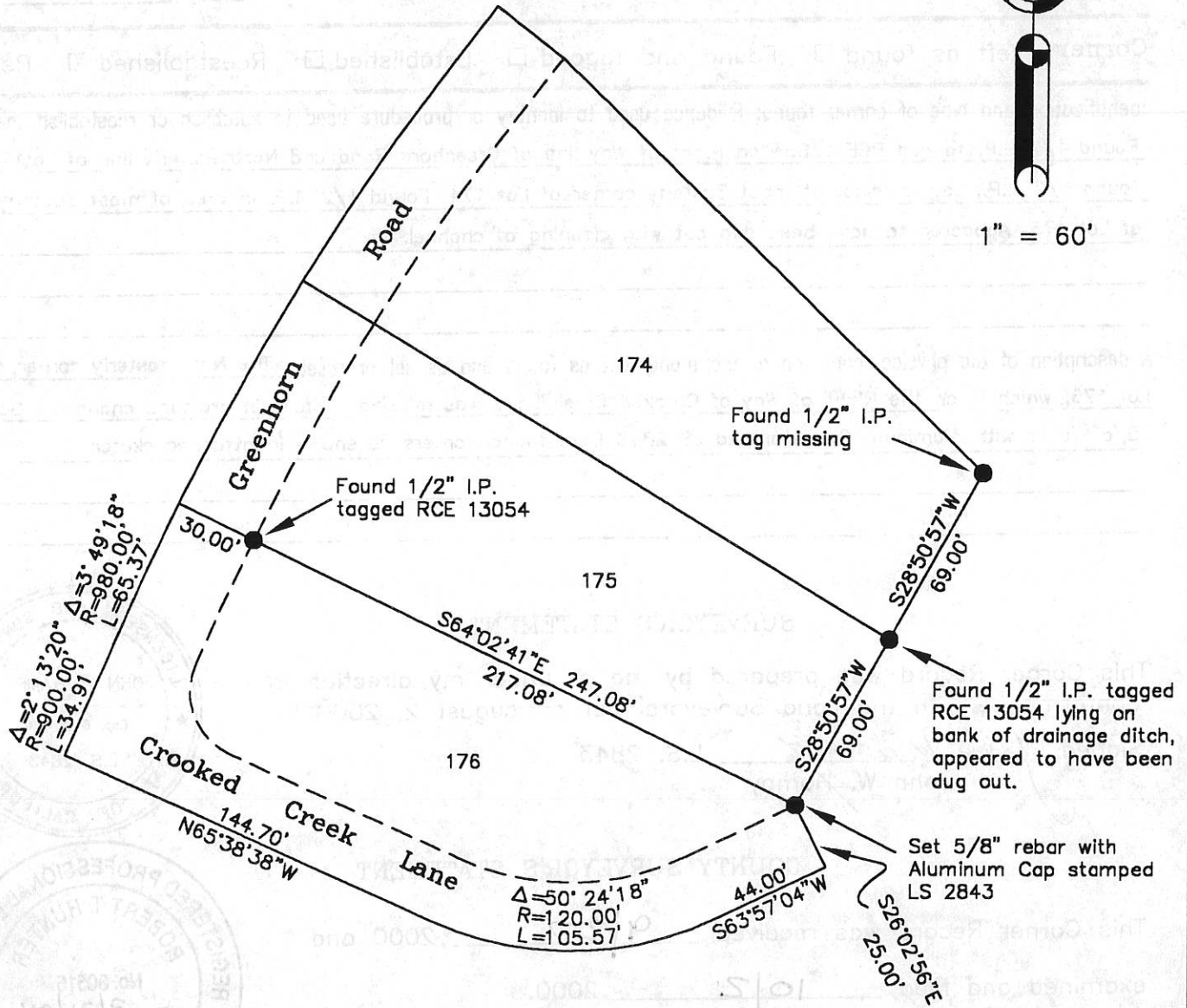
Signed R. Tom Hunter Title Co. Surveyor



County Surveyor's Comment _____



1" = 60'



LOT 176, 3 M 70
GREENHORN SUBDIVISION

Hamby Surveying Inc.
P.O. Box 1209
Portola, CA 96122
(530) 832-5571

00111