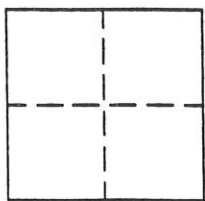


CORNER RECORD

Document Number 181

Section 17. T. 24 N., R. 15 E., M.D.M. County of Plumas, California

Brief Legal Description Lot 69, Dixie Valley Properties Unit 1, Book 4 of Maps Page 5, Plumas Co. records



CORNER TYPE

Government Corner Control
 Meander Property
 Rancho Other
 Date of Survey _____

COORDINATES (Optional)

N. _____
 E. _____
 Zone _____ Datum _____
 Elev. _____

Corner— Left as found Found and tagged Established Reestablished Rebuilt

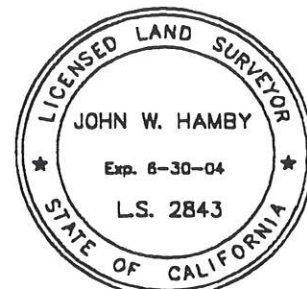
Identification and type of corner found: Evidence used to identify or procedure used to establish or reestablish the corner: Found 3/4" rebar at most Westerly corner of Lot 70 and found Plastic Cap RLS 2469 on right of way line of Dixie Valley road in record position per 4 M 8, as shown in attached sketch.

A description of the physical condition of the monument as found and as set or reset: Set 5/8" rebar with Aluminum Cap stamped LS 2843 at most Westerly corner of Lot 69 and at angle point on Westerly line of Lot 69 in record position as shown in attached sketch.

SURVEYOR'S STATEMENT

This Corner Record was prepared by me or under my direction in conformance with the Land Surveyors' Act on July 10, 2000.

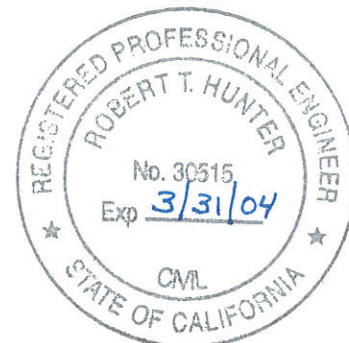
Signed John W Hamby L.S. 2843
John W. Hamby



COUNTY SURVEYOR'S STATEMENT

This Corner Record was received 9/27 2000 and examined and filed 10/2 2000.

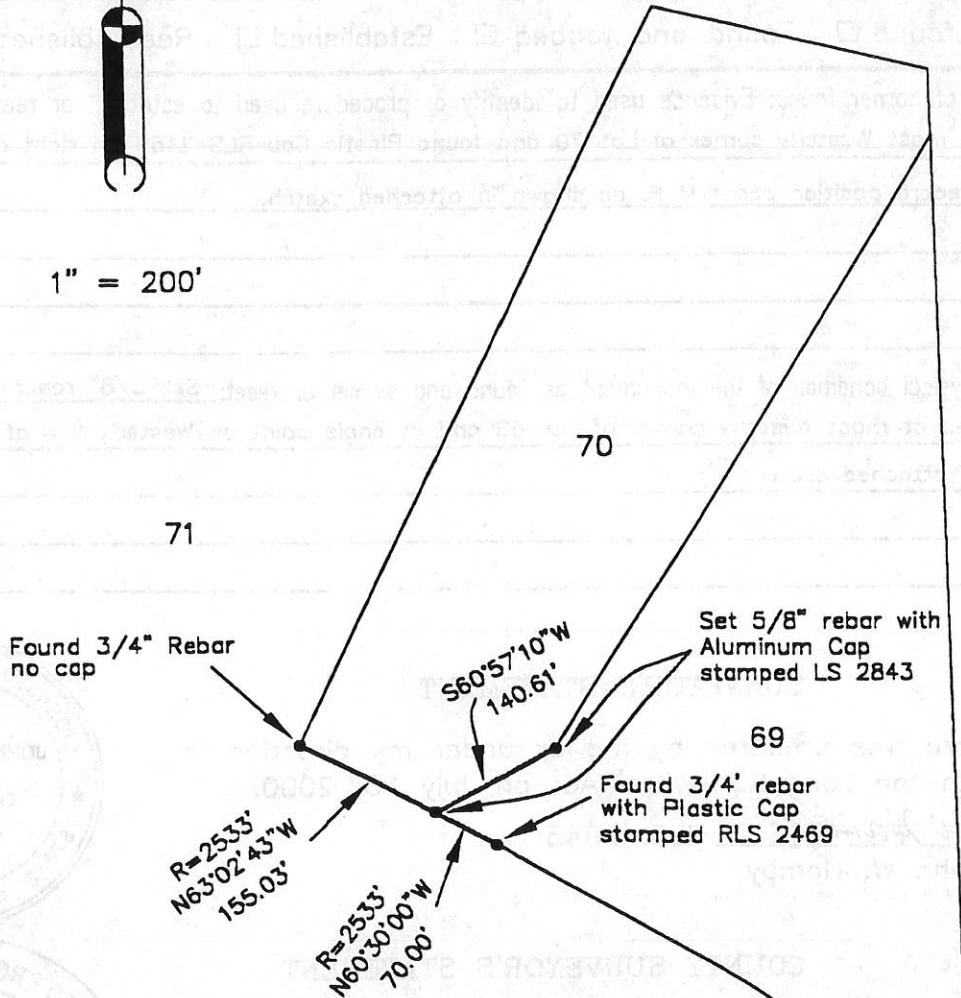
Signed R Tom Hunter Title Co. Surveyor



County Surveyor's Comment _____



1" = 200'



Note: Bearings and distances are record per 4 M 8

00093cr