

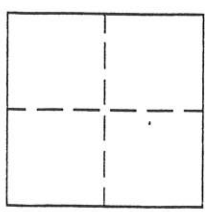
CORNER RECORD

Document Number 182

4, 5, 8+9 22N 12E

County of PLUMAS, California

Brief Legal Description LOT 26 - PLUMAS-EUREKA ESTRATES



CORNER TYPE

Government Corner Control
Meander Property
Rancho Other
Date of Survey 1992 & Nov. 2000

COORDINATES

(Optional)
N. _____
E. _____
Zone _____ Datum _____
Elev. _____

Corner- Left as found Found and tagged Established Reestablished Rebuilt

Identification and type of corner found: Evidence used to identify or procedure used to establish or reestablish the corner:
Found corners as indicated on the attached sketch and reset missing monuments
as shown on 4 M 54.

A description of the physical condition of the monument as found and as set or reset:
Monuments were found or set as indicated on the attached sketch.

SURVEYOR'S STATEMENT

This Corner Record was prepared by me or under my direction in conformance with the Land Surveyors' Act in NOV, 2000.

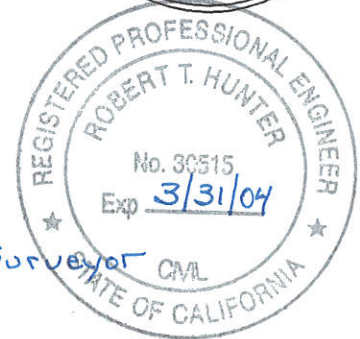
Signed John W Hamby L.S. 2843
John W. Hamby



COUNTY SURVEYOR'S STATEMENT

This Corner Record was received October 30, 2000 and examined and filed November 2, 2000.

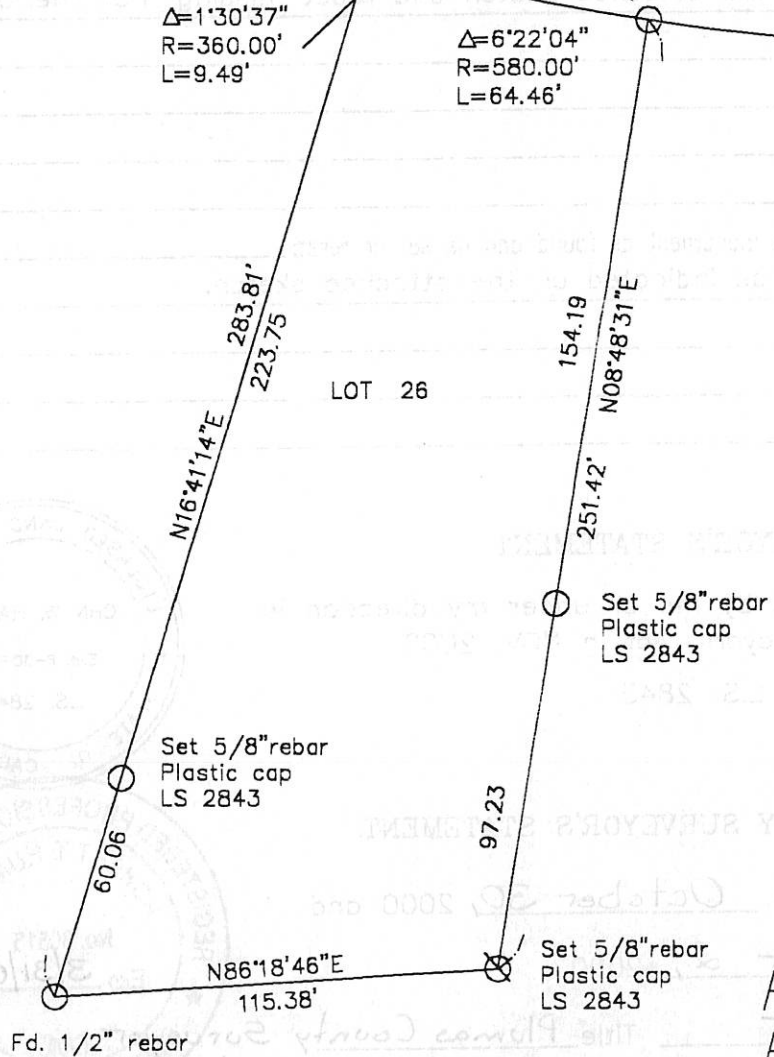
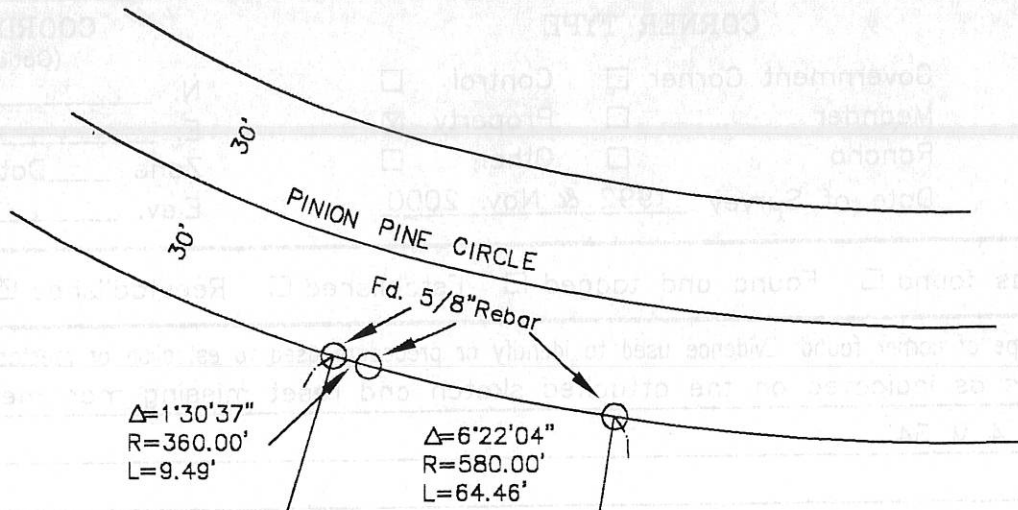
Signed R. Tom Hunter Title Plumas County Surveyor



County Surveyor's Comment _____



1" = 50'



LOT 26
 PLUMAS-EUREKA
 ESTATES, No. 3

4 M 54

Hamby Surveying Inc.
 P.O. Box 1209
 Portola, CA 96122
 (530) 832-5571

92028