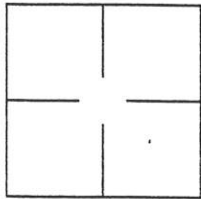


# CORNER RECORD

Document Number # 183

County of Sumas, California

Brief Legal Description Lot 1 of 6 M 30 Portion Sec. 31 T.23N. R.17E.



### CORNER TYPE

Government Corner  Control   
 Meander  Property   
 Rancho  Other   
 Date of Survey August, 2000

### COORDINATES (Optional)

N. \_\_\_\_\_  
 E. \_\_\_\_\_  
 Zone \_\_\_\_\_ Datum \_\_\_\_\_  
 Elev. \_\_\_\_\_

Corner— Left as found  Found and tagged  Established  Reestablished  Rebuilt

Identification and type of corner found: Evidence used to identify or procedure used to establish or reestablish the corner:

Found 1/2" Rebar with plastic cap marked RCE 22836 per 6 M 30 as shown

A description of the physical condition of the monument as found and as set or reset:

The Northeast corner and the Southwest corner of Lot 1 had been destroyed by road and utility construction. Reset corners with 5/8" Rebar with aluminum caps, LS 2843

### SURVEYOR'S STATEMENT

This Corner Record was prepared by me or under my direction in conformance with the Land Surveyors' Act on August 11, 2000.

Signed John W. Hamby L.S. 2843  
 John W. Hamby



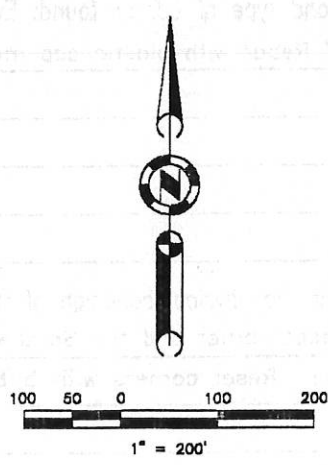
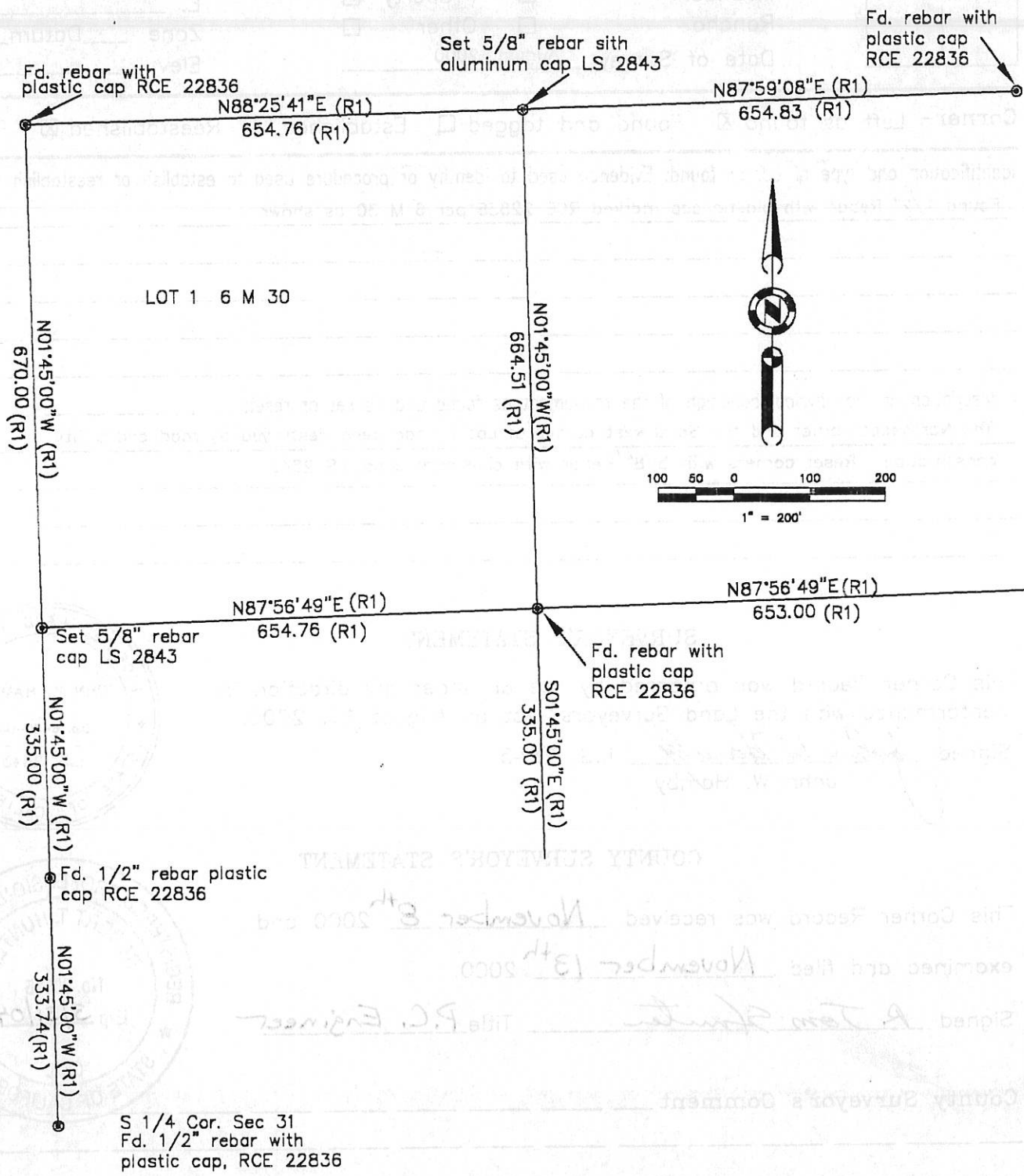
### COUNTY SURVEYOR'S STATEMENT

This Corner Record was received November 8<sup>th</sup> 2000 and examined and filed November 13<sup>th</sup> 2000.

Signed R. Tom Spunter Title P.C. Engineer



County Surveyor's Comment \_\_\_\_\_



(R1) = Record per 6 M 30.

00121