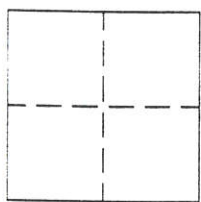


# CORNER RECORD

Document Number 184

Section 6, T.23N.R.14E. MDM County of Plumas, California

Brief Legal Description Lot 73 - Crocker Mountain Estates 3 M 44



### CORNER TYPE

Government Corner  Control   
Meander  Property   
Rancho  Other   
Date of Survey Oct. 26, 2000

### COORDINATES

(Optional)

N. \_\_\_\_\_  
E. \_\_\_\_\_  
Zone \_\_\_\_\_ Datum \_\_\_\_\_  
Elev. \_\_\_\_\_

Corner- Left as found  Found and tagged  Established  Reestablished  Rebuilt

Identification and type of corner found: Evidence used to identify or procedure used to establish or reestablish the corner:  
Found 1/2" Iron Pipe with plastic caps at various Lot corners.

A description of the physical condition of the monument as found and as set or reset: \_\_\_\_\_  
Set 5/8" rebar with aluminum cap LS 2843 as a reference point to the Lot corner that was destroyed during road construction.

### SURVEYOR'S STATEMENT

This Corner Record was prepared by me or under my direction in conformance with the Land Surveyors' Act on October 26, 2000.

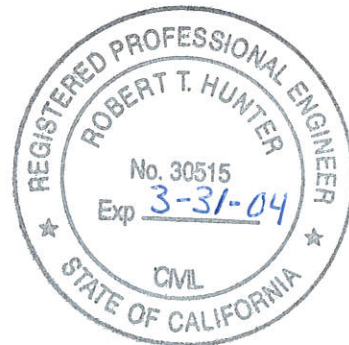
Signed John W. Hamby L.S. 2843  
John W. Hamby



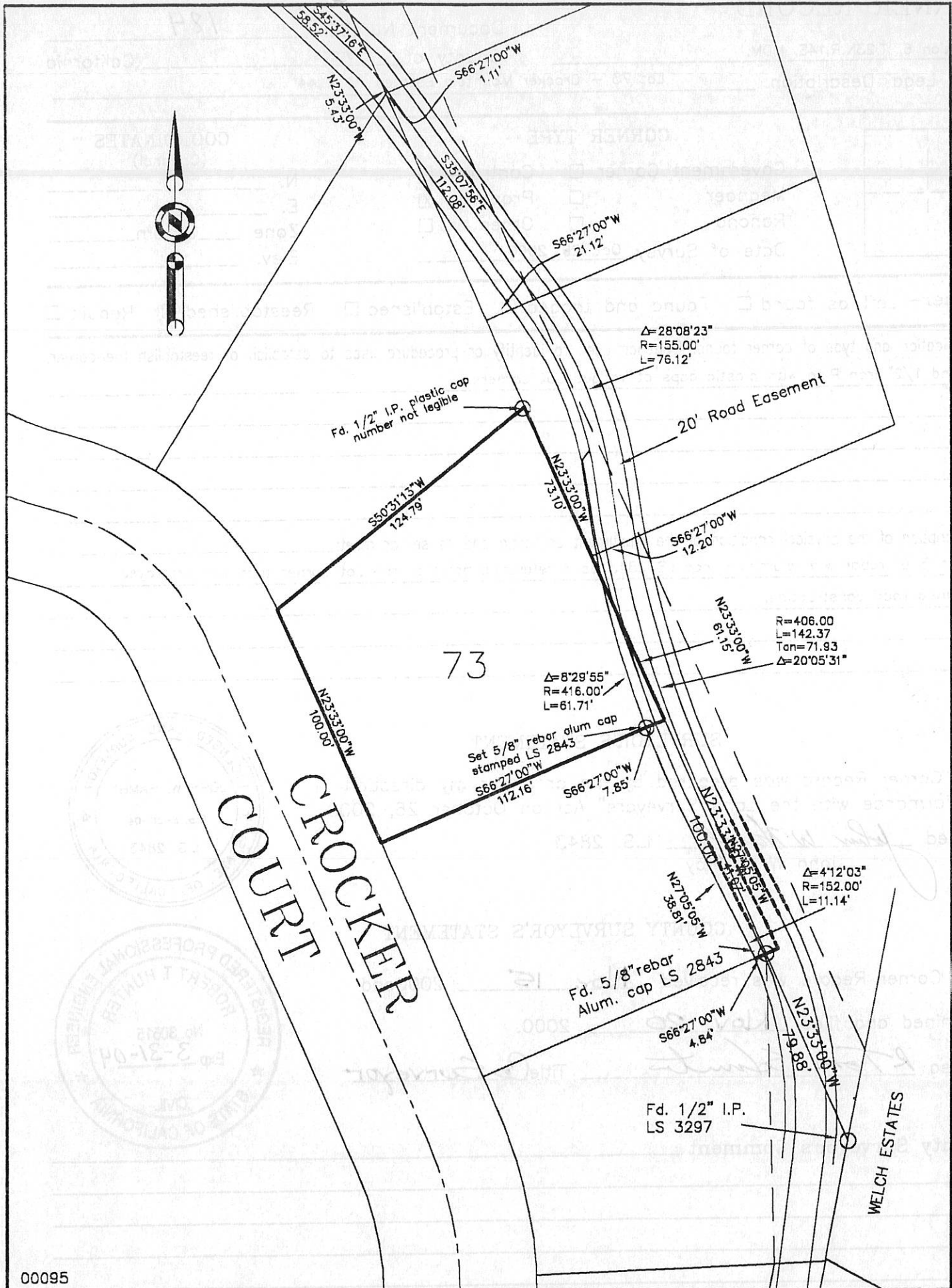
### COUNTY SURVEYOR'S STATEMENT

This Corner Record was received Nov. 15 2000 and examined and filed Nov. 20 2000.

Signed R Tom Hunter Title Co Surveyor



County Surveyor's Comment \_\_\_\_\_



00095