

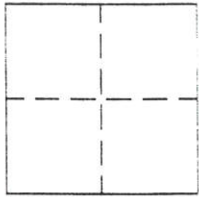
CORNER RECORD

Document Number 185

Section 15 T.24N.R.9E. MDM

County of Plumas, California

Brief Legal Description Parcel 3 per 3 PM 55



CORNER TYPE

Government Corner  Control   
Meander  Property   
Rancho  Other   
Date of Survey Oct. 17, 2000

COORDINATES  
(Optional)

N. \_\_\_\_\_  
E. \_\_\_\_\_  
Zone \_\_\_\_\_ Datum \_\_\_\_\_  
Elev. \_\_\_\_\_

Corner- Left as found  Found and tagged  Established  Reestablished  Rebuilt

Identification and type of corner found: Evidence used to identify or procedure used to establish or reestablish the corner:  
Monuments found were 1" Iron Pipe Tagged LS 2702 at locations indicated on 3 PM 55.

A description of the physical condition of the monument as found and as set or reset: \_\_\_\_\_  
The Northwest monument was missing. Since there was no way to proportion the reset, we set the replacement monument by distance-distance from found monuments.

SURVEYOR'S STATEMENT

This Corner Record was prepared by me or under my direction in conformance with the Land Surveyors' Act in October, 2000.

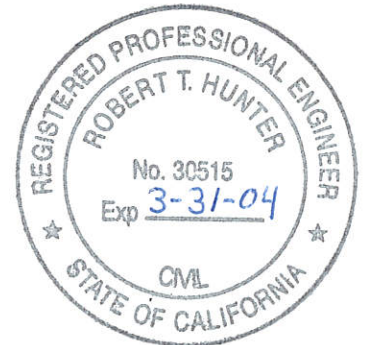
Signed John W. Hamby L.S. 2843  
John W. Hamby



COUNTY SURVEYOR'S STATEMENT

This Corner Record was received 11/15 2000 and examined and filed 11/20 2000.

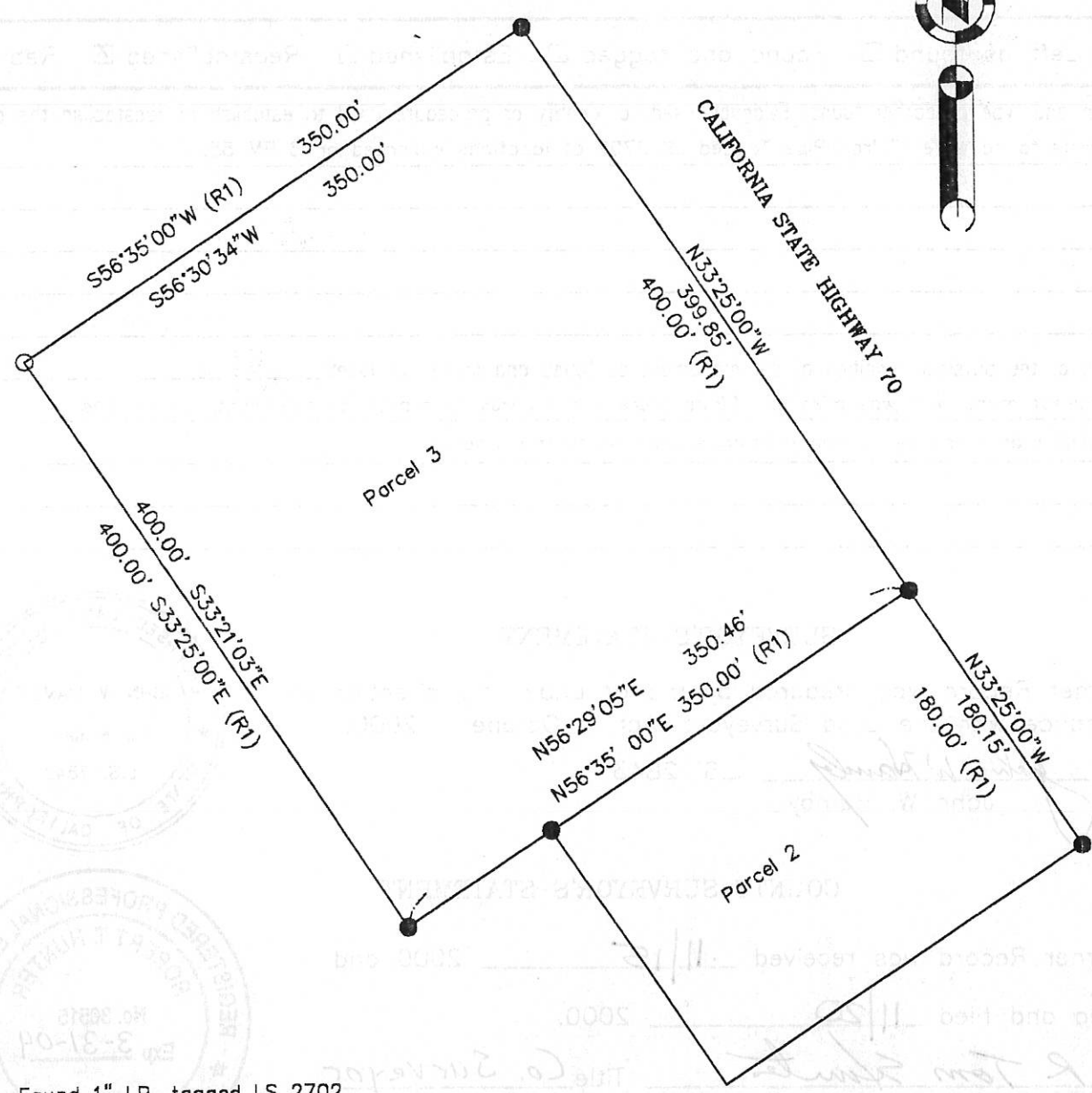
Signed R. Tom Hunter Title Co. Surveyor



County Surveyor's Comment \_\_\_\_\_

COORDINATES  
(Optional)

CORNER TYPE



350.00'  
S56°35'00"W (R1)  
S56°30'34"W

CALIFORNIA STATE HIGHWAY 70  
N33°25'00"W  
399.85'  
400.00' (R1)

400.00'  
400.00' S33°21'03"E  
S33°25'00"E (R1)

Parcel 3

N56°29'05"E 350.46'  
N56°35' 00"E 350.00' (R1)

N33°25'00"W  
180.15'  
180.00' (R1)

Parcel 2

- Found 1" I.P. tagged LS 2702
- Set 5/8" Rebar with Alum. cap LS 2843
- (R1) Record per 3 PM 55