

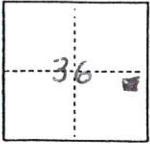
CORNER RECORD

187

COUNTY OF Plumas T. 28N R. 7E MDB&M MERIDIAN CALIFORNIA

CORNER TYPE: GOV'T. CORNER MEANDER RANCHO CONTROL OTHER

CORNER IDENTIFICATION — DATE OF VISIT Nov 21, 2000



LOT 28, LAKE ALMANOR COUNTRY CLUB UNIT NO. 3
RM BOOK 1, PAGE 74, PLUMAS COUNTY RECORDS.

CORNER — LEFT AS FOUND FOUND AND TAGGED REESTABLISHED OBLITERATED CORNER REBUILT

PHYSICAL DESCRIPTION OF CORNER FOUND; EVIDENCE AND METHOD USED TO IDENTIFY OR REESTABLISH

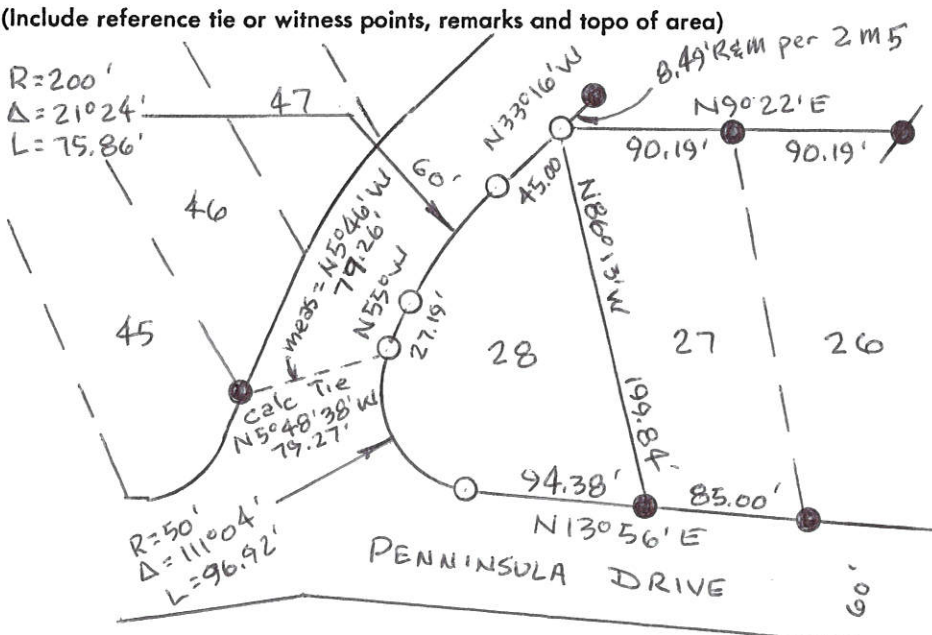
No evidence of original corners was found due to construction of road & placement of fill material for landscaping. Sufficient corners were found on the North line of Lot 28 & on the East & West lines of Lot 26 & 27. To re-establish the missing corners. There was no material discrepancy between the found monuments & the map record. An additional corner across the street was also used to verify this.

PHYSICAL DESCRIPTION OF MONUMENTS REBUILT OR PERPETUATED

Set 5/8" rebar & Plug LS 4530 @ re-established corners.

CALIFORNIA COORDINATE SYSTEM ORDER: FIRST SECOND THIRD
STATIONS USED: NGS (USC & GS) STATE COUNTY OTHER STATION _____ STATION _____
ZONE _____ ELEVATION _____ NORTHINGS (Y) _____ EASTINGS (X) _____

SKETCH: (Include reference tie or witness points, remarks and topo of area)



Lot 28, LACC # 3
1M74



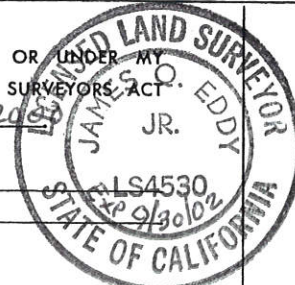
Scale: 1" = 100'

- Set 5/8" rebar & Cap LS 4530
 - Fd 3/4" IP LS 2322
 - ⊗ Fd 1/2" rebar & Plug LS 4643
- Distances & Bearings are Record & Measured per 1M74 & 2M5

SURVEYOR'S CERTIFICATE

THIS CORNER RECORD WAS PREPARED BY ME OR UNDER MY DIRECTION IN CONFORMANCE WITH THE LAND SURVEYORS ACT ON November 22, 2000

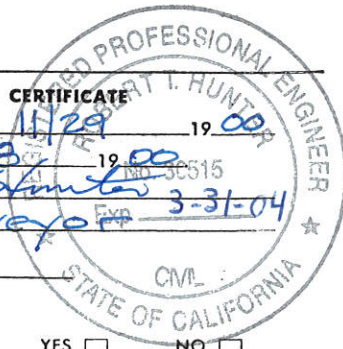
SIGNED: James D. Eddy Jr.
L.S. or R.C.E. No.: LS 4530



COUNTY SURVEYOR'S CERTIFICATE

THE CORNER RECORD WAS RECEIVED 11/29 19 00 AND EXAMINED AND FILED 12/8 19 00
BY: R. Tom Stimler
TITLE: Co Surveyor

DOCUMENT No. 187



STATEMENT ON BACK OF SHEET

YES NO

A CORNER RECORD IS TO BE USED TO PERPETUATE MONUMENTS ONLY

The following are the Board's instructions:

1. This Corner Record is to be prepared by a licensed land surveyor or registered civil engineer and filed with the County Surveyor (or County Engineer) in the county in which the corner is located.
2. A Corner Record shall be filed within 90 days when a corner or corner accessory originally established by official public land surveys of the United States Government has been found remonumented (reestablished—as an obliterated corner), witnessed or used in a survey.
3. The County Surveyor shall examine the Corner Record within 20 days. He shall examine it for conformance with Section 8766, subsection b and c. He shall then file and index this Corner Record after:
 1. He finds that the information is complete.
 2. He finds a disagreement with other record and he has noted the disagreement on the reverse side of the Corner Record.

He shall notify the surveyor of his action.

4. At the option of the licensed land surveyor or registered civil engineer, a Corner Record may be filed for any property corner, property controlling corner, reference monument, or accessory to a property corner, when none of the conditions requiring a record of survey is required as outlined in Section 8762.
5. Corner identification should be by the Bureau of Land Management marking system, as outlined in the "Manual of Surveying Instructions" (Sections 4-23 through 4-45 in the 1973 manual). (Sections 259 through 280 in the 1947 manual)
6. Perpetuation of monument to be filed on a Corner Record form shall be those monuments set to replace existing or obliterated corners as identified in Sections 348 through 358 of the "Manual of Surveying Instruction, 1947" or Sections 5-4 through 5-19 of the "Manual of Surveying Instruction, 1973". The location and restoration of lost corners shall be shown on a record of survey in accordance with Section 8764.
7. California Coordinate System data may be included only when readily available.
8. A sketch showing reference ties to identifiable objects in the vicinity of the corner shall be provided when appropriate. Photographs or topo of the monument and general area, etc., are also encouraged.
9. Only one corner shall be included on each Corner Record. Accessories to a corner, may be included on the Corner Record for the subject corner.
10. A Corner Record is not required but may be filed to show its physical condition when: a) a Corner Record is on file and the corner is found as described in the existing Corner Record filed; b) all conditions of the statutes are complied with by proper notation on a record of survey map, subdivision map or parcel map filed after January 1, 1974.