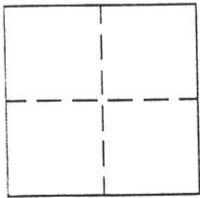


CORNER RECORD

Document Number 189

Portion of Sections 9 & 10 T.22N.R.12E. County of Plumas, California

Brief Legal Description Parcel shown on 6 RS 5



CORNER TYPE

Government Corner Control
Meander Property
Rancho Other
Date of Survey 11-20-2000

COORDINATES (Optional)

N. _____
E. _____
Zone _____ Datum _____
Elev. _____

Corner— Left as found Found and tagged Established Reestablished Rebuilt

Identification and type of corner found: Evidence used to identify or procedure used to establish or reestablish the corner:
Found monuments as shown on 6 RS 5 except 2 missing monuments as shown on the attached sketch, where I set 5/8" rebar with aluminum cap marked LS 2843.

A description of the physical condition of the monument as found and as set or reset:
Found Monuments were in good condition and in locations shown on record maps.

SURVEYOR'S STATEMENT

This Corner Record was prepared by me or under my direction in conformance with the Land Surveyors' Act on November, 8, 2000.

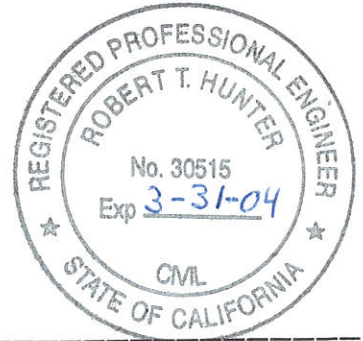
Signed John W Hamby L.S. 2843
John W. Hamby



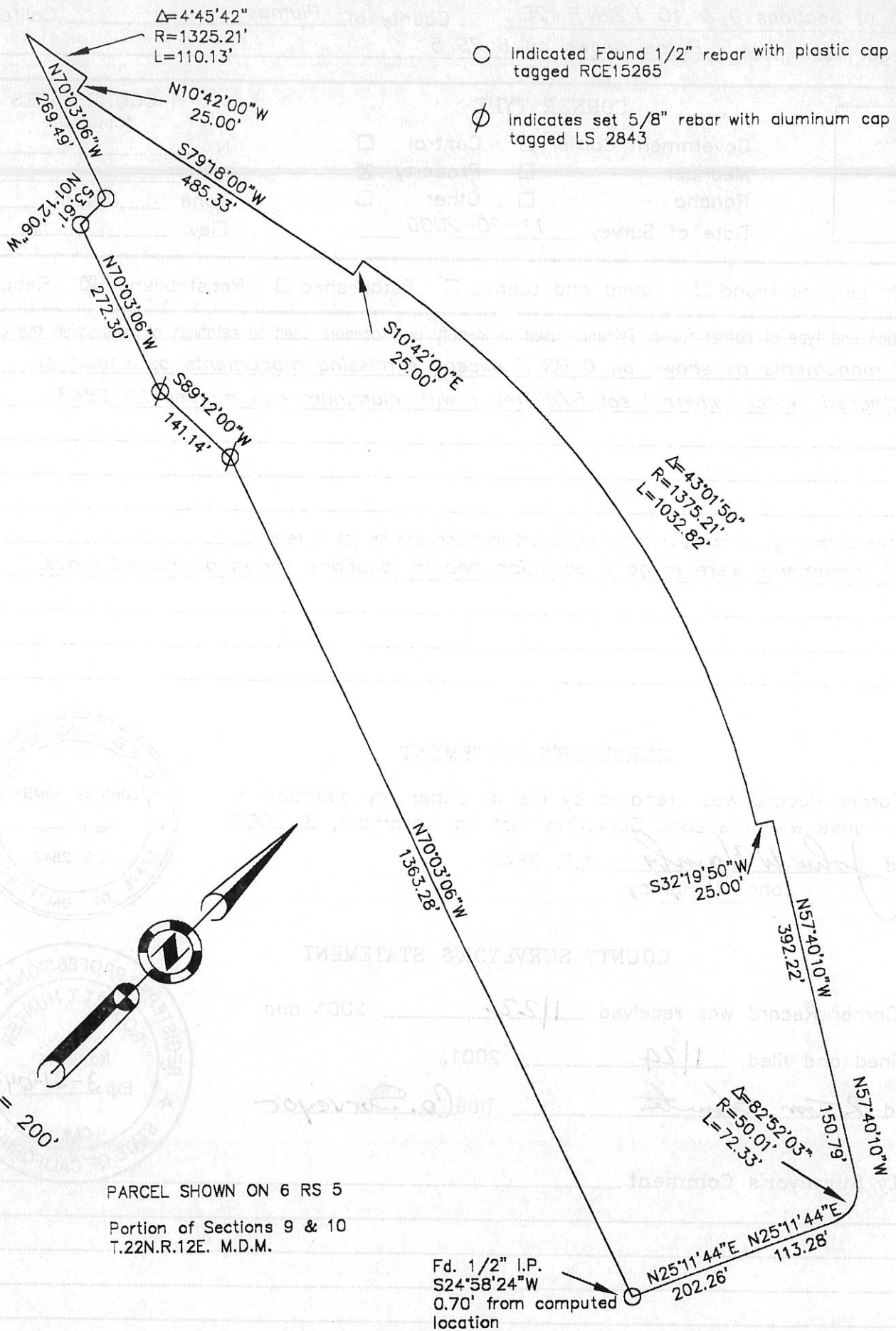
COUNTY SURVEYOR'S STATEMENT

This Corner Record was received 1/22 2001 and examined and filed 1/24 2001.

Signed R Tom Hunter Title Co. Surveyor



County Surveyor's Comment _____



- Indicated Found 1/2" rebar with plastic cap tagged RCE15265
- ⊕ Indicates set 5/8" rebar with aluminum cap tagged LS 2843



PARCEL SHOWN ON 6 RS 5
 Portion of Sections 9 & 10
 T.22N.R.12E. M.D.M.

Fd. 1/2" I.P.
 S24°58'24"W
 0.70' from computed location