

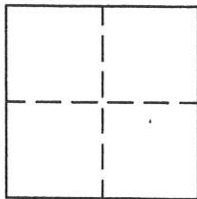
CORNER RECORD

Document Number 195

Sec. 12, T.23N.R.13E.

County of PLUMAS, California

Brief Legal Description Lots 32 & 33 GRIZZLY CREEK RETREAT 3 M 84



CORNER TYPE

Government Corner  Control   
Meander  Property   
Rancho  Other   
Date of Survey April 20, 2001

COORDINATES (Optional)

N. \_\_\_\_\_  
E. \_\_\_\_\_  
Zone \_\_\_\_\_ Datum \_\_\_\_\_  
Elev. \_\_\_\_\_

Corner- Left as found  Found and tagged  Established  Reestablished  Rebuilt

Identification and type of corner found: Evidence used to identify or procedure used to establish or reestablish the corner:

Found 1/2" Iron Pipe tagged L.S. 2702 at locations indicated on attached drawing

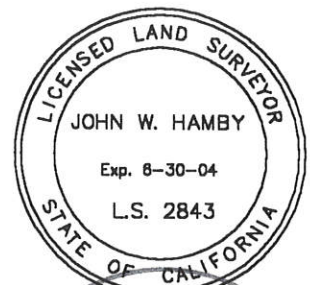
A description of the physical condition of the monument as found and as set or reset:

All found monuments were in proper locations and in good condition. Set 5/8" rebar as shown with cap stamped L.S. 2843.

SURVEYOR'S STATEMENT

This Corner Record was prepared by me or under my direction in conformance with the Land Surveyors' Act on April 20, 2001

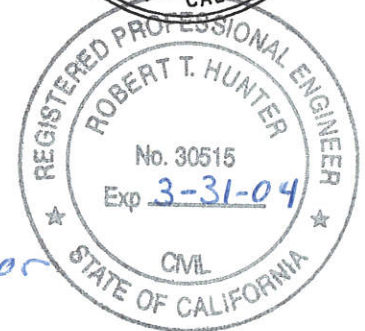
Signed John W. Hamby L.S. 2843  
John W. Hamby



COUNTY SURVEYOR'S STATEMENT

This Corner Record was received April 18<sup>TH</sup> 2001 and examined and filed May 2<sup>ND</sup> 2001.

Signed R. Tom Hunter Title County Surveyor



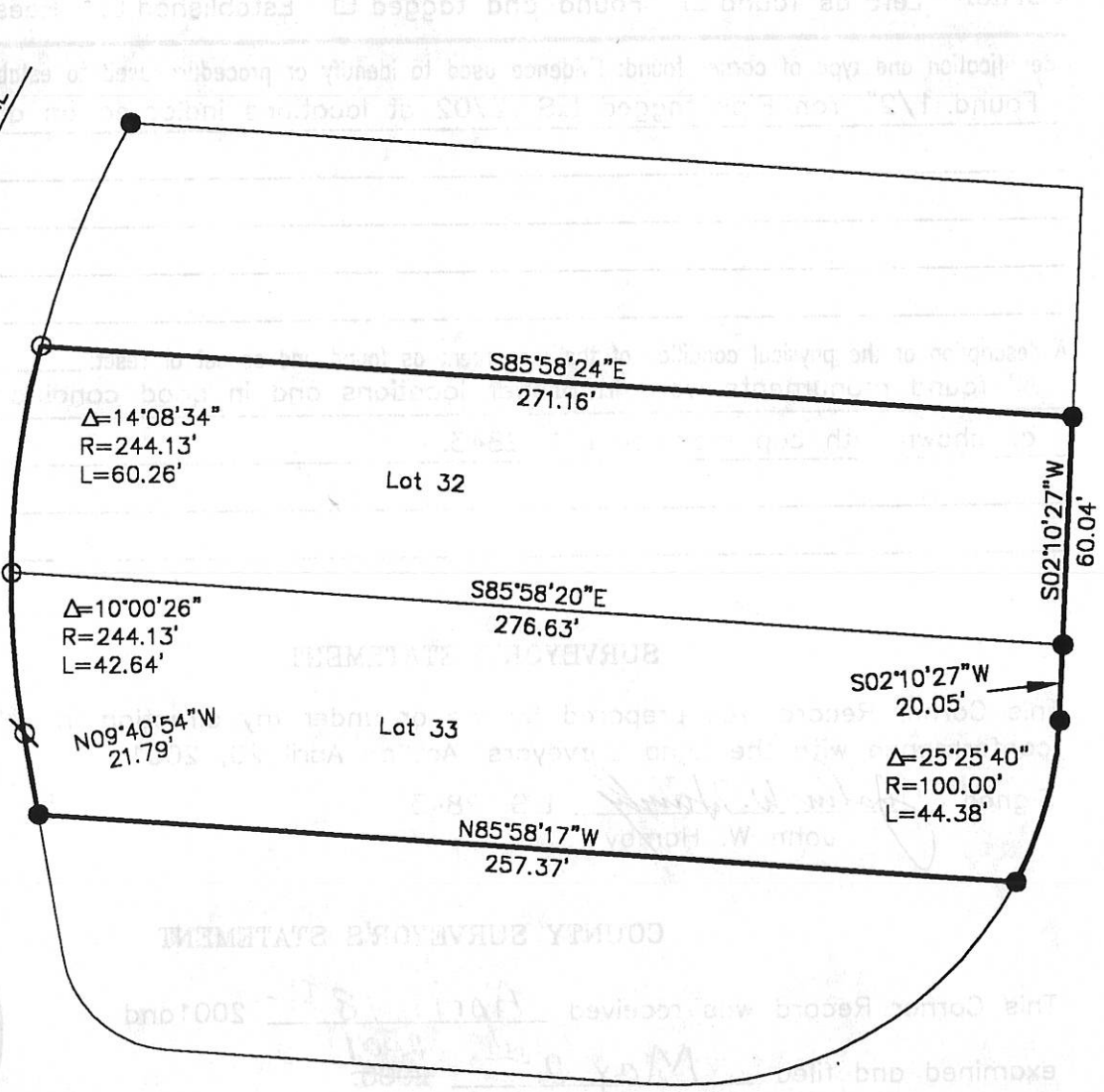
County Surveyor's Comment \_\_\_\_\_

- FOUND 1/2" P tagged LS 2702
- Set Rebar with Aluminum Cap LS 2843
- ⊗ Set rebar with plastic cap tagged LS 2843



1" = 50'

BUCKSKI N LANE



$\Delta=14^{\circ}08'34''$   
 $R=244.13'$   
 $L=60.26'$

Lot 32

S85°58'24"E  
 271.16'

S02°10'27"W  
 60.04'

$\Delta=10^{\circ}00'26''$   
 $R=244.13'$   
 $L=42.64'$

Lot 33

S85°58'20"E  
 276.63'

S02°10'27"W  
 20.05'

N09°40'54"W  
 21.79'

$\Delta=25^{\circ}25'40''$   
 $R=100.00'$   
 $L=44.38'$

N85°58'17"W  
 257.37'

ROCKY CLIFF ROAD

01056