

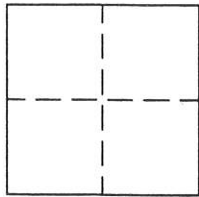
CORNER RECORD

Document Number 196

Section 16, T. 22 N., R. 12 E., M.D.M.

County of Plumas, California

Brief Legal Description Lot 16, Gold Ridge Subdivision Unit No. 2, Book 6 Maps Page 68



CORNER TYPE

Government Corner  Control   
Meander  Property   
Rancho  Other   
Date of Survey June 14, 2001

COORDINATES (Optional)

N. \_\_\_\_\_  
E. \_\_\_\_\_  
Zone \_\_\_\_\_ Datum \_\_\_\_\_  
Elev. \_\_\_\_\_

Corner— Left as found  Found and tagged  Established  Reestablished  Rebuilt

Identification and type of corner found: Evidence used to identify or procedure used to establish or reestablish the corner:  
Found Northeast, Southeast and Southwest corners of Lot 16 from which I established reference monuments on the top of Bank of the creek on the Northerly and Westerly line of Lot 16 as shown in sketch.

A description of the physical condition of the monument as found and as set or reset: Set 5/8" rebar with Aluminum Cap stamped LS 2843 on Top Bank of creek for reference monument to Northwest corner of Lot 16 which is missing due to being washed out by highwater.

SURVEYOR'S STATEMENT

This Corner Record was prepared by me or under my direction in conformance with the Land Surveyors' Act on June 25, 2001.

Signed John W. Hamby L.S. 2843  
John W. Hamby



COUNTY SURVEYOR'S STATEMENT

This Corner Record was received June 18<sup>th</sup> 2001 and examined and filed July 2<sup>nd</sup> 2001.

Signed R. Tom Hunter Title P.C. Engineer



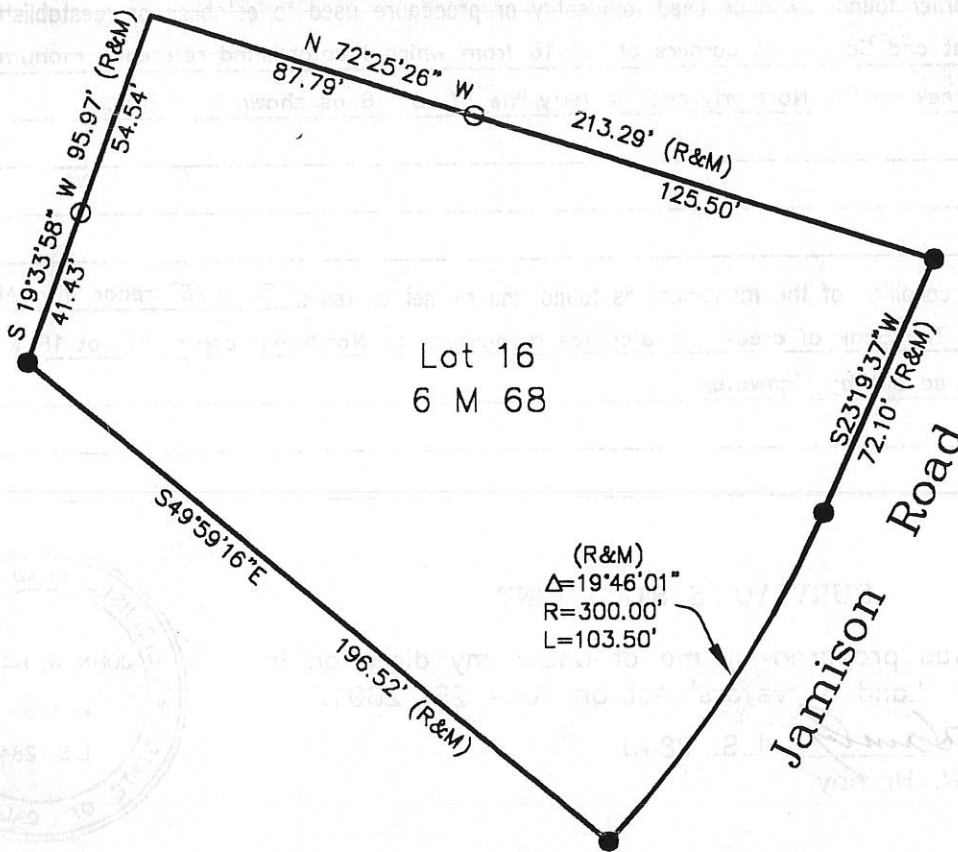
County Surveyor's Comment \_\_\_\_\_

NOTE:

Northwest Corner and reference point on North line of Lot 16 missing due to highwater.



1" = 50'



Lot 16  
6 M 68

(R&M)  
 $\Delta = 19^{\circ}46'01''$   
 $R = 300.00'$   
 $L = 103.50'$

### LEGEND

- FOUND Rebar with Aluminum Cap RCE 13225
- SET Rebar with Aluminum Cap LS 2843  
for reference points to Northwest corner of Lot 16
- (R&M) Record and measured per 6 M 68