

MEASURED

CURVE	DELTA ANGLE	RADIUS
C 1	14° 21' 57"	220.00
C 2	06° 42' 40"	341.90
C 3	26° 33' 37"	220.00

RECORD

CURVE	DELTA ANGLE	RADIUS	ARC
C 1	14° 21' 42"	220.00	55.16
C 2	06° 42' 26"	341.90	40.05
C 3	26° 35' 07"	220.00	101.98

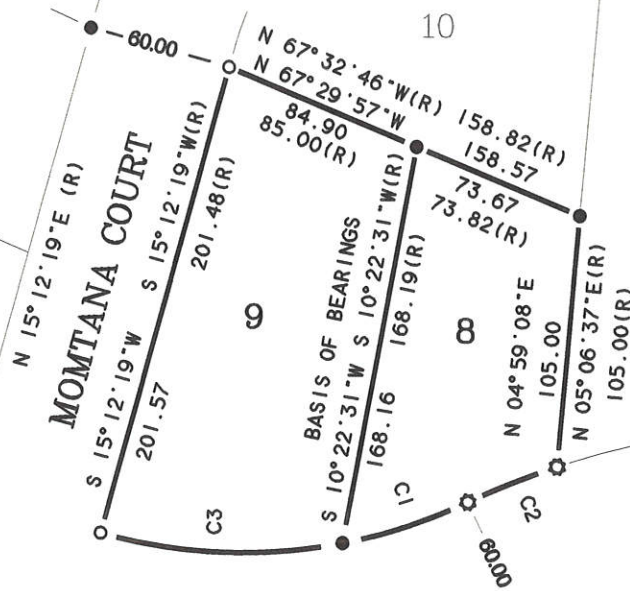


SCALE 1 INCH = 80 FEET

PAR 3 (8PM97)

PAR 4 (8PM97)

ESCONDIDO WAY
S 67° 51' 16" E (R)



BASIS OF BEARINGS

THE PROPERTY LINE COMMON TO LOTS 8 AND 9 SHOWN AS N 10-22-31 E IN BOOK 2 OF SUBDIVISION MAPS AT PAGE 87, IS THE BASIS OF BEARINGS SHOWN ON THIS CORNER RECORD.

LEGEND

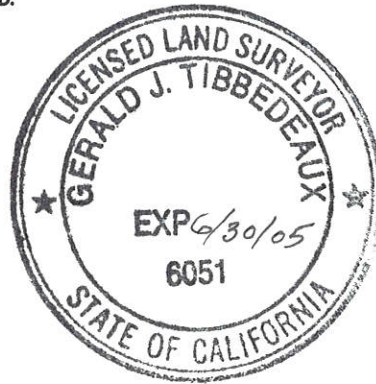
- FOUND 3/4" IRON PIPE & TAG L.S. 2702
- ⊙ FOUND 3/4" IRON PIPE SET TAG P.L.S. 6051
- 1/2" REBAR & CAP P.L.S. 6051
- (R) RECORD INFORMATION PER BOOK 2 OF SUBDIVISION MAPS, PAGE 87

SURVEYOR'S STATEMENT

THIS CORNER RECORD WAS PREPARED BY ME OR UNDER MY DIRECTION IN CONFORMANCE WITH THE LAND SURVEYOR'S ACT ON AUGUST 30, 2001.

Gerald J. Tibbedeaux

 GERALD JOSEPH TIBBEDEAUX
 P.L.S. 6051
 LICENSE EXPIRES 06/30/05

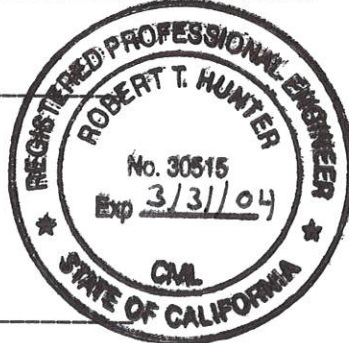


COUNTY SURVEYOR'S STATEMENT

THIS CORNER RECORD WAS RECEIVED September 4th 2001
 AND EXAMINED AND FILED September 7th 2001

R. Tom Hunter

 R. TOM HUNTER R.C.E. 30515
 COUNTY SURVEYOR
 LICENSE EXPIRES 03/31/04



CORNER RECORD FOR

Jess LaRue
 LOTS 8 & 9 BOOK 2 OF SUBDIVISION MAPS PAGE 87
 WITHIN SECTION 34, T. 23N., R. 13E., M.D.M.

DELLEKER PLUMAS COUNTY CALIFORNIA
 SCALE 1 INCH = 80 FEET AUGUST, 2001

Tibbedeaux Surveying
 P.O. Box 1960 / 565 Ridge St
 Portola, CA 96122

DOCUMENT # 197

197

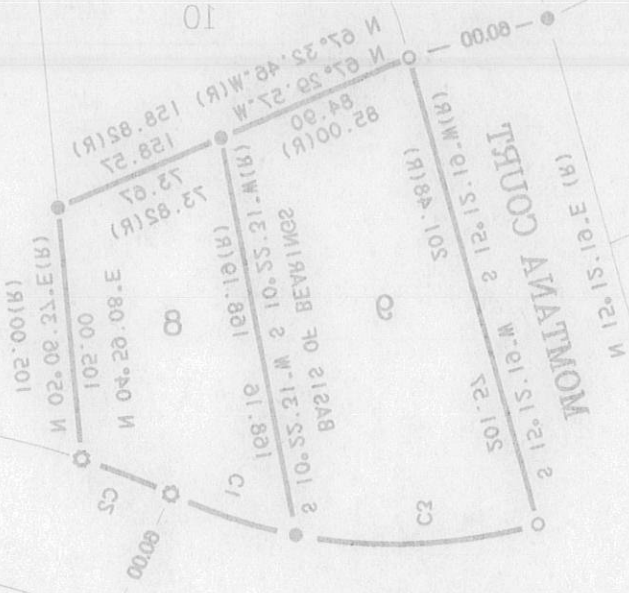


SCALE 1 INCH = 80 FEET

MEASURED				RECORD			
CURVE	DELTA ANGLE	RADIUS	ARC	CURVE	DELTA ANGLE	RADIUS	ARC
C 1	14° 21' 27"	250.00	22.18	C 1	14° 21' 45"	250.00	22.14
C 2	08° 42' 40"	341.90	40.02	C 2	08° 42' 28"	341.90	40.02
C 3	28° 23' 27"	250.00	101.98	C 3	28° 23' 07"	250.00	102.08

PAR 3 (8PM97)

PAR 4 (8PM97)



ESCONDIDO WAY
S 67° 21' 18" E (R)

ON THIS CORNER RECORD,
 IN BOOK 2 OF SUBDIVISION MAPS AT PAGE 87, IS THE BASIS OF BEARINGS SHOWN
 THE PROPERTY LINE COMMON TO LOTS 8 AND 9 SHOWN AS N 10° 22' 31" E
 BASIS OF BEARINGS

LEGEND

- FOUND 3/4" IRON PIPE & TAG L.S. 2708
- ⊙ FOUND 3/4" IRON PIPE SET TAG P.L.S. 6081
- 1/2" REBAR & CAP P.L.S. 6081
- (R) RECORD INFORMATION PER BOOK 2 OF SUBDIVISION MAPS PAGE 87

SURVEYOR'S STATEMENT

THIS CORNER RECORD WAS PREPARED BY ME OR UNDER MY
 DIRECTION IN CONFORMANCE WITH THE LAND SURVEYOR'S ACT
 ON AUGUST 30, 2001

[Signature]
 GERALD JOSEPH TIBBIDEAUX
 P.L.S. 6051
 LICENSE EXPIRES 08/30/05

AND EXAMINED AND FILED September 7th 2001
 THIS CORNER RECORD WAS RECEIVED September 4th 2001
 COUNTY SURVEYOR'S STATEMENT



[Signature]
 R. TOM HUNTER R.C.E. 30818
 COUNTY SURVEYOR
 LICENSE EXPIRES 08/31/04



PORTELA, CA 95128
 F.O. Box 1060 / 605 Ridge St
 Tibbideaux Surveying
 SCALE 1 INCH = 80 FEET
 AUGUST, 2001
 DELLEKER PLUMAS COUNTY CALIFORNIA
 WITHIN SECTION 34, T. 23N., R. 12E., M.D.M.
 LOTS 8 & 9 BOOK 2 OF SUBDIVISION MAPS PAGE 87
 FOR
 Jess Larive
 CORNER RECORD