

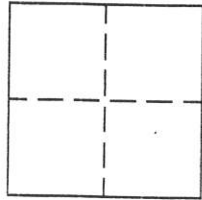
CORNER RECORD

Document Number 198

Section 8, T.22N.R.12 E 1.D.M.

County of Plumas, California

Brief Legal Description Lot 3 Plumas Eureka Estates Unit No. 2



CORNER TYPE

Government Corner Control
Meander Property
Rancho Other
Date of Survey Sept. 10, 2001

COORDINATES (Optional)

N. _____
E. _____
Zone _____ Datum _____
Elev. _____

Corner— Left as found Found and tagged Established Reestablished Rebuilt

Identification and type of corner found: Evidence used to identify or procedure used to establish or reestablish the corner:
Found 1/2" rebar, in record positions as shown on 4 M 96, and as indicated on the attached sketch.

Reestablished Northwest corner Lot 3, Northeast corner Lot 3, and Southeast corner Lot 3 from found 1/2" rebar.

A description of the physical condition of the monument as found and as set or reset: _____
most of the found points were in fair condition and location. The Southerly corner of Lot 3 was badly bent so we replaced it with a 5/8" rebar capped LS 2843.

SURVEYOR'S STATEMENT

This Corner Record was prepared by me or under my direction in conformance with the Land Surveyors' Act on Sept. 10, 2001.

Signed John W. Hamby L.S. 2843
John W. Hamby



COUNTY SURVEYOR'S STATEMENT

This Corner Record was received October 18, 2001 and examined and filed October 23, 2001.

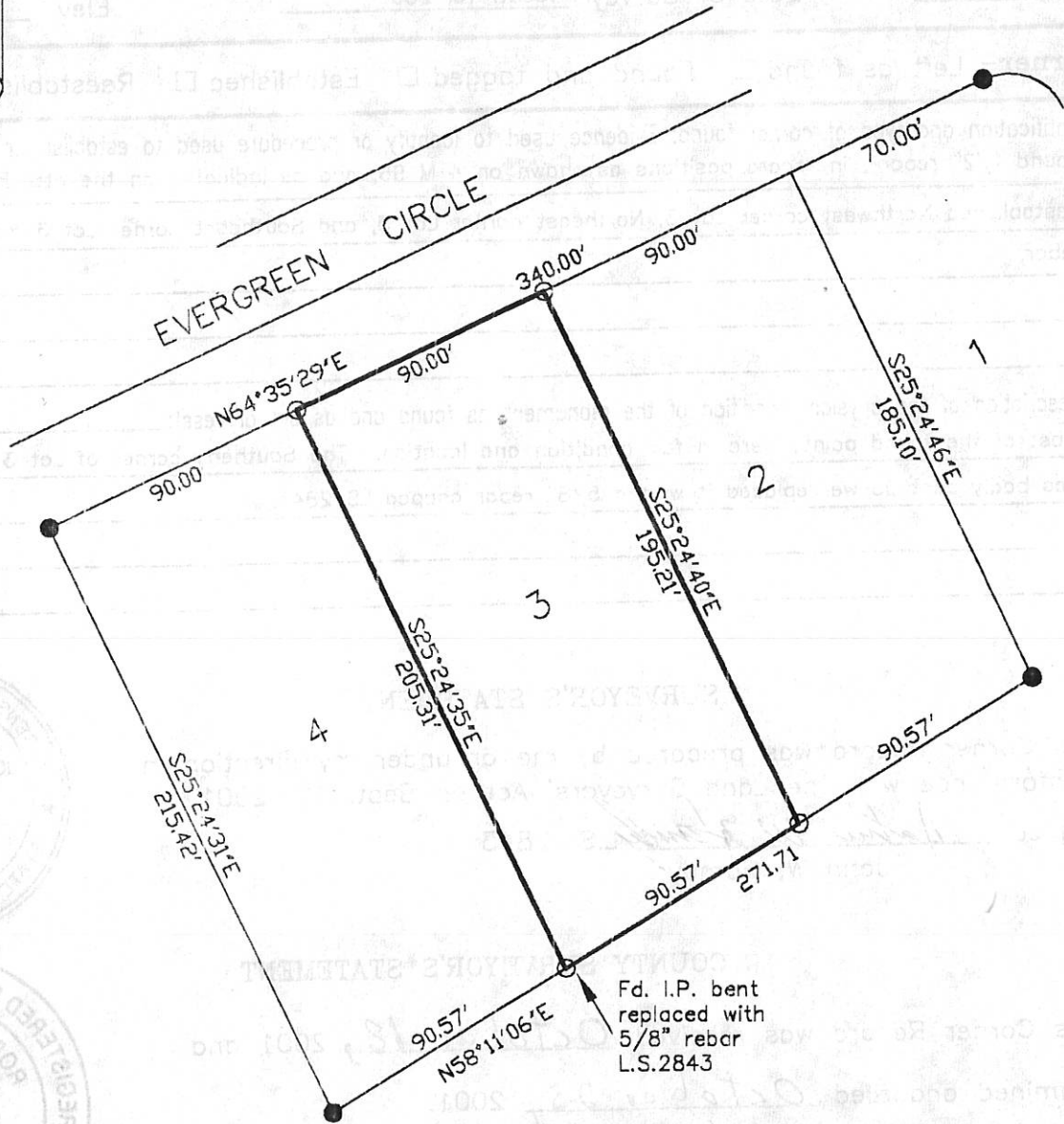
Signed R Tom Hunter Title County Surveyor



County Surveyor's Comment _____



- Found 1/2" rebar per 4 M 96.
- Set 5/8" rebar capped LS 2843.



LOT 3 PLUMAS EUREKA
ESTATES UNIT No 2
4 M 96

Plumas County, California
Sept. 2001 Scale 1" = 60'

Hamby Surveying Inc.
P.O. Box 1209
Portola, CA 96122
(530) 832-5571

